



EXPANSION JOINTS & TRANSITION SEALANTS

*Pre-Compressed, Acrylic-Impregnated Foams | Preformed Extrusions
Closed-Cell Foams | Monolithic Polyurethane Methacrylate | Gun-Grade Foams*





 **TREMCO**
Construction Products Group

 **Dryvit**

 **Nudura**

 **Prebuck**

 **TREMCO**

 **Willseal**





EXPANSION JOINT SYSTEMS

Willseal's best-in-class pre-compressed and acrylic-impregnated foam products for horizontal and vertical joint applications.

Tremco's industry-leading joint sealants, polyurethane-methacrylate technology, pre-formed extrusions and gun-grade foams.

For over 110 combined years, our products have been continuously specified and installed on thousands of new construction

and restoration projects worldwide, and have always stood for the highest quality sealants.

Willseal and Tremco products are designed for maximum waterproofing, thermal, sound, and air-tightness to meet global passive housing standards — and feature superior durability, excellent movement capabilities, and streamlined installation.

MARKETS SERVED:

- Commercial construction
- Industrial / manufacturing
- Prefabricated / modular
- Educational and institutional
- Infrastructure and DOT
- Residential construction
- Stadiums and arenas
- Parking facilities
- Medical facilities
- Fire protection

JOINT APPLICATIONS:

- Traffic-grade horizontal joints
- Primary vertical joints
- Curtain walls, windows and flashing
- Control, longitudinal and transverse joints
- Dryvit® and exterior panel system joints
- Pre-cast concrete and built-up walls
- Fire-rated joints
- Seismic, large and retrofit joints
- Below-grade applications



CONTENTS

Expansion Joint Systems Overview	3
Joint Selection Guide	5-6
Expansion Joints Color Options	7
Willseal® Foam Joint Sealants	8-16
Willseal® 250.....	8
Willseal® 250-B.....	8
Willseal® 250R.....	9
Willseal® 600.....	9
Willseal® Backer Roll.....	10
Willseal® Coreseal.....	10
Willseal® Color Coreseal V & H.....	11
Willseal® FR-V.....	12
Willseal® FR-H.....	12
Willseal® Seismic.....	13
Willseal® STC.....	13
Willseal® PF100.....	14
Willseal® PF200.....	14
Willseal® WJS.....	15
Willseal® Protector Plates.....	15
Willseal® Factory Transitions.....	16
Tremco® Pre-Formed Extrusions	17
Proglaze® ETA.....	17
Spectrem® Simple Seal.....	17
Tremco® Gun-Grade Foam Accessories	18
ExoAir® Flex Foam.....	18
ExoAir® LEF.....	18

JOINT SELECTION GUIDE

APPLICATIONS & PROPERTIES

PRODUCT	Movement	Horizontal			Vertical			Transition-in-Plane	Fire-Rated	Primary Seal	Secondary Seal	Traffic-Rated
		Horizontal	Vertical	Transition-in-Plane	Horizontal	Vertical	Transition-in-Plane					
Willseal® 250	+/- 50%	•		•					•		•	
Willseal® 250-B	+/- 60%	•							•			•
Willseal® 250-R	+/- 50%	•							•			•
Willseal® 600	+/- 50%		•						•	•		
Willseal® Backer Roll	+/- 50%		•							•		
Willseal® Coreseal	+/- 25%	•	•	•					•	•		•
Willseal® Color Coreseal V	+/- 25%		•	•					•			
Willseal® Color Coreseal H	+/- 25%	•		•					•			•
Willseal® FR-V ¹	+/- 50%		•	•		•			•			
Willseal® FR-H ¹	+/- 50%	•		•		•			•			•
Willseal® Seismic	+/- 50%		•	•					•			
Willseal® STC	+/- 50%		•									
Willseal® PF100	+/- 50%		•	•					•	•		
Willseal® PF200	+/- 50%		•	•					•			
Willseal® WJS	N/A	•										•

¹ FR-V and FR-H max throat openings are dependent on UL system listing. Please reach out to Tech Resources for additional information.

Reference the current product data sheets on our website at www.tremcosealants.com for more specific product information.

For specific tie-in recommendations and instructions, please contact your local Tremco Sales or Technical Service Representative.

JOINT SELECTION GUIDE

APPLICATIONS & PROPERTIES

PRODUCT	GreenGuard	Impregnated Open-Cell Foam	Closed-Cell EVA Foam	Thermoplastic	Below-Grade Horizontal	1/2" to 6" Throat Opening	1/2" to 4" Throat Opening	10" Joint Suitable	Factory-Applied Sealant Face	Many Color Options
Willseal® 250		•				•		•		
Willseal® 250-B	•	•					•	•		
Willseal® 250-R	•	•					•	•		
Willseal® 600	•	•				•				
Willseal® Backer Roll		•				•				
Willseal® Coreseal	•		•	•			•			
Willseal® Color Coreseal V	•		•				•	•	•	
Willseal® Color Coreseal H	•		•	•			•	•		
Willseal® FR-V ¹		•					•	•	•	
Willseal® FR-H ¹		•					•	•		
Willseal® Seismic	•	•				•		•	•	
Willseal® STC	•	•				•		•	•	
Willseal® PF100		•								
Willseal® PF200		•						•	•	
Willseal® WJS				•						

¹ FR-V and FR-H max throat openings are dependent on UL system listing. Please reach out to Tech Resources for additional information.

Reference the current product data sheets on our website at www.tremcosealants.com for more specific product information.

For specific tie-in recommendations and instructions, please contact your local Tremco Sales or Technical Service Representative.

EXPANSION JOINT PRODUCTS

With a wide variety of pre-compressed, acrylic-impregnated foams, pre-formed extrusions, and gun-grade foams, Willseal and Tremco have the ideal solution for any expansion joint or transition sealant project.

Whether you require traffic-grade horizontal, color-matched vertical, 1, 2, or 3 hour fire-rated, seismic capabilities, waterproof, sound

attenuating, dust-proof or airtight seals, you'll find a variety of options in the following pages.

All products feature unmatched quality and durability, excellent movement capabilities, and innovative, streamlined installations designed to help create safer, greener, high-performance structures.

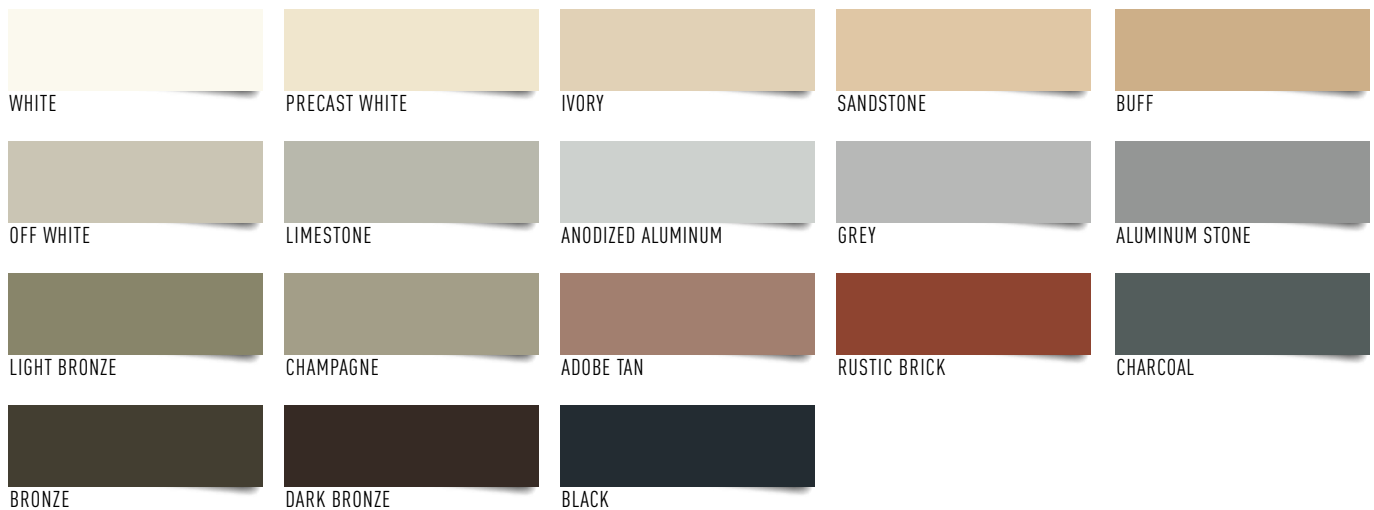
COLOR OPTIONS

Many of our joint sealant solutions are available finished in any standard Spectrem® color — in addition to a broad range of industry standard colors. For even greater customization, we can custom-match most colors to blend in perfectly with your project.

(Products with this icon indicate the availability of color options.)



SPECTREM® STANDARD COLORS



TRAFFIC RATED SPECTREM COLORS



All colors shown are approximate and may not reflect sheen or shade precisely, as varying amounts of aggregate will alter light-reflecting properties. Tremco always recommends a test patch to gain final color approval. Different lighting conditions can influence color appearance: for truer color please view in daylight. Some colors may require a minimum quantity. Custom colors are available upon request. Contact Tremco Customer Service for more information.

Willseal® 250

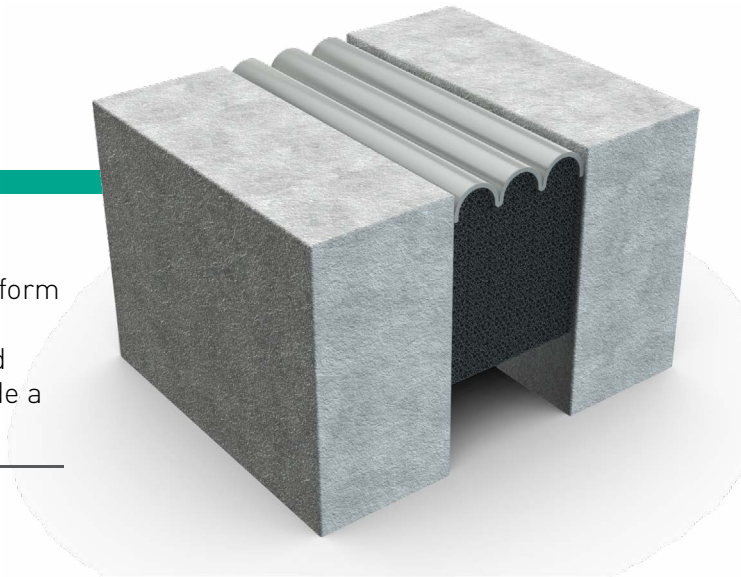
Willseal® 250 is a pre-compressed, self-expanding foam joint sealant with a traffic grade silicone coating engineered to perform in horizontal applications subject to solvents and fuels such as those found in parking garages, road and bridge joints, and airport runways. Willseal 250 is specifically designed to provide a maximum seal in structures with shear and rapid movement.

FEATURES & BENEFITS:

- Allows for up to +/- 50% movement from mean joint size
- UV stable primary seal
- Advanced acrylic impregnation without heavy fillers
- True tensionless system

COMMON APPLICATIONS:

- Primary horizontal expansion joints with vehicular traffic and/or pedestrian traffic
- Parking garages, stadiums, airport taxiways and runways
- Plaza decks on grade



Willseal® 250-B

Willseal® 250-B is a pre-compressed, self-expanding foam joint sealant with a highway-grade silicone coating engineered to perform in primary horizontal applications such as road and bridge joints. The pre-compressed foam core is saturated with a hydrophobic acrylic emulsion and coated with a fuel-resistant silicone sealant, allowing it to provide an optimal primary seal that is waterproof to rain and snow at the surface level.

FEATURES & BENEFITS:

- Allows for up to +/- 60% movement
- Specifically designed for rapid cycling and thermal shock
- Permanently conforms to varying joint contours
- Suitable for exposure to common automotive oils/fuels and jet fuel (per FHA PL06)

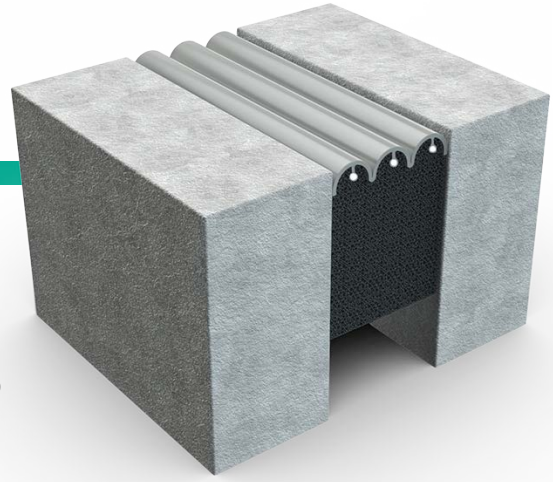
COMMON APPLICATIONS:

- Primary horizontal expansion joints with vehicular traffic
- Road and bridge joints
- Approach slabs



Willseal® 250-R

Willseal® 250 is a patent-protected expansion joint system which combines the performance and reliability of Willseal 250 with reinforcing members positioned beneath the sealant face to support higher point loads. It is typically used as a joint sealant for both interior and exterior high foot traffic areas, engineered to perform in horizontal applications. Current patents: No. 9739049, No. 9951515



FEATURES & BENEFITS:

- Allows for up to +/- 50% movement
- Ideally suited to handle heavy pedestrian traffic
- Accommodates rapid rate of movement
- Surface load transfer

COMMON APPLICATIONS:

- Primary horizontal expansion joints with vehicular and/or pedestrian traffic
- Parking garages, stadiums, airport taxiways and runways
- Plaza decks on grade



Willseal® 600

Willseal® 600 is a pre-compressed, self-expanding foam joint sealant, engineered to perform as a highly flexible, weathertight, primary seal in vertical exterior applications. Willseal 600 can also provide the ideal foundation for a large variety of wet sealants, such as silicone, polyurethane, polysulfide, and acrylic if desired. Allows for up to +/- 50% movement.



FEATURES & BENEFITS:

- Never under tension or cohesion strain
- Minimal surface prep and no priming required
- Vapor-permeable, and seals gaps as small as 1/8"
- Thermal resistance (R-value)

COMMON APPLICATIONS:

- Primary expansion, control, isolation and retrofit joints
- Exterior panel systems - metal, masonry, stone, EIFS (Dryvit), curtain walls
- Pre-cast concrete walls, tilt-up walls
- Window and flashing applications
- Interior vapor, dust, acoustical and air control



Willseal® Backer Roll™

Willseal® Backer Roll™ is a pre-compressed, self-expanding foam joint sealant, engineered to perform as a highly flexible secondary seal in vertical exterior applications. Willseal Backer Roll provides the ideal foundation for a large variety of wet sealants, such as silicone, polyurethane, polysulfide, and acrylic.

FEATURES & BENEFITS:

- Allows for up to +/- 50% movement
- Never under tension or cohesion strain
- Minimal surface prep and no priming required

COMMON APPLICATIONS:

- Secondary construction joints – for use behind wet-applied sealants
- Exterior panel systems - masonry, stone, EIFS (Dryvit), curtain walls
- Pre-cast concrete walls, tilt-up walls
- Window and flashing applications
- Interior vapor, dust, acoustical and air control



Willseal® Coreseal

Willseal® Coreseal is a preformed, compressible system that is impermeable to water and provides a watertight seal. It meets all applicable standards for compressible sealants and performs under extreme conditions including bridge and parking structure expansion joints. It provides a watertight, dust-proof, airtight, UV stable, chemically resistant, soundproof, and insulated seal.

FEATURES & BENEFITS:

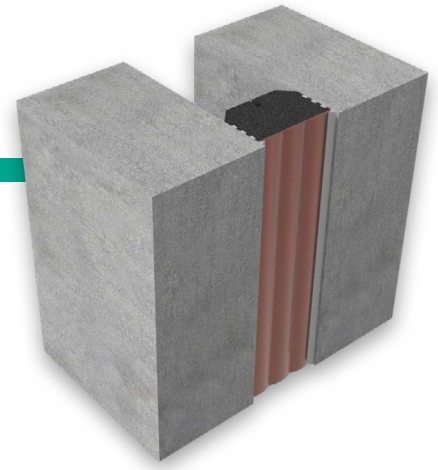
- Unique profile for easier install and less tension
- Creates a watertight, dust-proof, noise reducing, thermally insulating primary seal
- Able to be heat spliced
- Customizable to suit unique application needs

COMMON APPLICATIONS:

- Primary horizontal and vertical joints
- Highway longitudinal and transverse joints
- Parking structure expansion joints
- Below grade connections



Willseal® Color Coreséal V



Willseal® Color Coreséal V is a lightweight, closed-cell vinyl acetate (EVA) copolymer foam with a factory-applied sealant coating designed to provide a watertight, dust-proof, airtight, noise reducing, thermally insulating and UV stable primary seal for vertical applications.

FEATURES & BENEFITS:

- Accommodates rapid rates of joint movement
- Monolithic foam will not delaminate like multi-layer products
- Can be supplied with a factory-applied puncture-resistant sealant coating
- Suitable for joints up to 10" wide

COMMON APPLICATIONS:

- Vertical expansion, control and isolation joints
- Precast concrete walls, tilt-up walls
- Exterior panel systems (masonry, granite, metal, EIFS and curtain walls)
- Seismic, large and retrofit joints



Willseal® Color Coreséal H



Willseal® Color Coreséal H is a lightweight, closed-cell vinyl acetate (EVA) copolymer foam with a factory-applied traffic-rated sealant coating designed to provide a watertight, dust-proof, airtight, noise reducing, thermally insulating and UV stable primary seal for horizontal applications.

FEATURES & BENEFITS:

- Accommodates rapid rates of joint movement
- Monolithic foam will not delaminate like multi-layer products

COMMON APPLICATIONS:

- Below grade connections
- Highway joints
- Seismic, large and retrofit joints
- Bridge and parking structure expansion joints



Willseal® FR-V

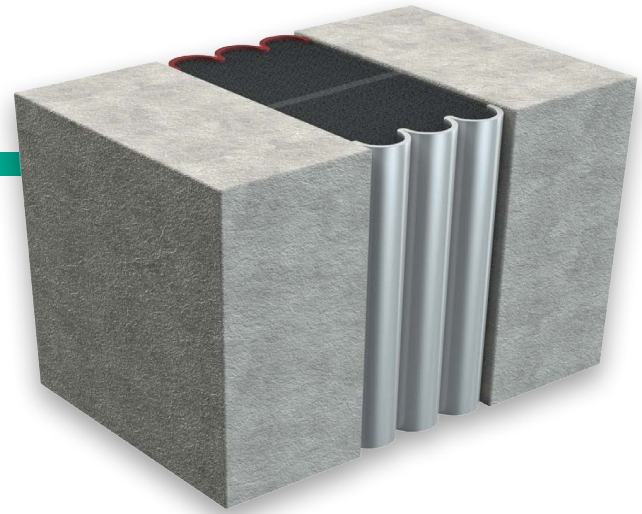
Willseal® FR-V is a factory controlled, watertight, clean handling, UV stable, sound attenuating, energy efficient and fire rated joint seal with a single, unified installation process. Willseal FR-V provides a 1, 2, or 3-hour fire rated vertical seal.

FEATURES & BENEFITS:

- Innovative internal smoke barrier prevents fumes from penetrating the joint system
- Can be supplied with a factory-applied puncture-resistant sealant coating
- Waterproof silicone faces on fire-retardant impregnated foam
- No need for additional intumescent bellows
- Non-invasive anchoring means no drilling or modification to the substrates
- UL 2079 tested and certified

COMMON APPLICATIONS:

- Vertical wall installations
- Behind other expansion joint covers, plates or fillers



Willseal® FR-H

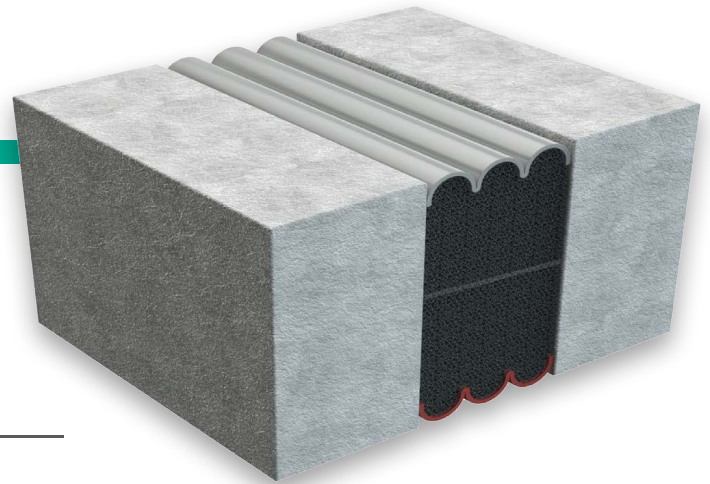
Willseal® FR-H is a factory controlled, watertight, clean handling, UV stable, sound attenuating, energy efficient and fire rated joint seal with a single, unified installation process. Willseal FR-H provides a 1, 2, or 3-hour fire rated seal. Available in a reinforced version for up to and including 3" joints.

FEATURES & BENEFITS:

- Innovative internal smoke barrier prevents fumes from penetrating the joint system
- Waterproof silicone faces on fire-retardant impregnated foam
- No need for additional intumescent bellows
- Non-invasive anchoring means no drilling or modification to the substrates
- UL 2079 tested and certified

COMMON APPLICATIONS:

- Horizontal expansion joints
- Behind other expansion joint covers, plates or fillers



Willseal® Seismic

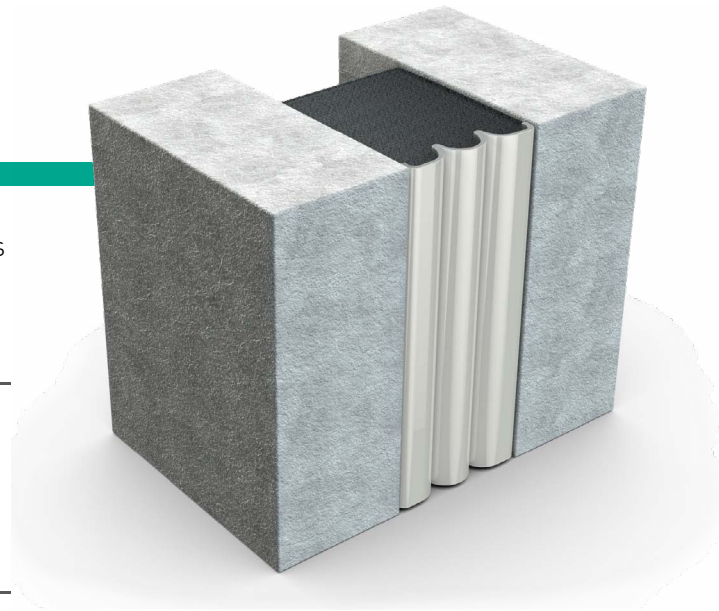
Willseal® Seismic is a one-step primary sealant for exposed areas where color matching is important. It has an elastomeric coating on the exterior surface, which can be factory colored to match most construction substrates or sealants.

FEATURES & BENEFITS:

- Accommodates rapid rates of joint movement
- Excellent compression recovery
- Permanently elastic and weathertight
- Allows for up to +/- 50% movement

COMMON APPLICATIONS:

- Primary vertical construction joints
- Expansion, control and isolation joints
- Retrofit and seismic joints
- Pre-cast concrete walls, tilt-up walls
- Exterior panel systems - masonry, granite, metal, EIFS (Dryvit), curtain walls



Willseal® STC

Willseal® STC is a compressible type expansion joint system for both vertical and horizontal joints on a vertical plane where interior sound control is needed. Willseal STC is excellent at blocking and controlling dust, draft, heat, cold and sound in interior offices, quiet rooms, lobbies, conference rooms.

FEATURES & BENEFITS:

- 1, 2, 3 or all 4 sides can be coated with colored silicone sealant to match wall coverings and substrates
- Ease of installation allows for labor savings and high production value
- No mechanical hardware needed for installation
- Variety of color options available

COMMON APPLICATIONS:

- Window to wall, head to wall, curtain wall and partition to wall connections
- Moveable or permanent partitions
- Parking garage expansion joints



Willseal® PF100

Willseal® PF100 is a pre-compressed, self-expanding foam joint seal, engineered to perform as a weathertight primary seal designed for use in various prefabricated applications. Single step application reduces labor, time, and material (no backer rod or tooling required).

FEATURES & BENEFITS:

- Incorporated into NFPA 285 assemblies
- Comprised of Low-Emitting Materials - Adhesives and Sealants (LEED Credit 4.1)
- Meets or exceeds the requirements of IBC testing for air barriers, 2 hours at 300pa (ASTM E283). Also meets or exceeds the requirements for ASTM E331, up to 1200pa.
- Thermal resistance (R-value) and UV stable

COMMON APPLICATIONS:

- Modular
- Panelization
- Tilt up and other off-site construction methods



Willseal® PF200

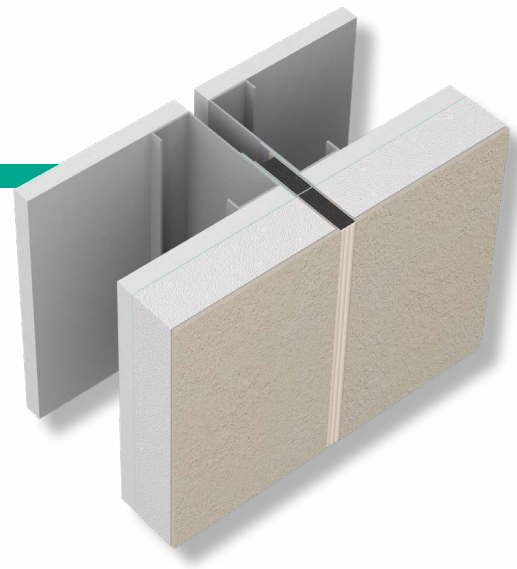
Willseal® PF200 is a pre-compressed, self-expanding foam joint seal, engineered to perform as a weathertight primary seal designed for use in various prefabricated applications. Available factory coated with a colored sealant face to match any aesthetic need. The product self-expands to fill the joint and is capable of +/- 50% movement from the mean joint size.

FEATURES & BENEFITS:

- Available in a wide variety of colors
- No side wall adhesive or finishes are needed
- Ease of use with minimal surface preparation
- Thermal resistance (R-value) and UV stable
- Meets or exceeds the requirements of IBC testing for air barriers

COMMON APPLICATIONS:

- Modular
- Panelization
- Tilt up and other off-site construction methods



Willseal® WJS

Willseal® WJS is a waterproof expansion joint system that combines an elastoprene rubber seal with Willcrete, an impact absorbing elastomeric concrete, to create a continuous seal with concrete decks. The glands can be supplied in continuous sizes and lengths to assure a continuous seal in any deck-to-deck or deck-to-wall applications.



FEATURES & BENEFITS:

- Capable of withstanding thermal, seismic, vertical and lateral shear movement
- Resistant to UV exposure, extreme temperatures, and most chemicals normally present in vehicular structures
- Provides a long-lasting, continuous watertight anchoring system that is ADA compliant and low profile
- System is integral with the concrete deck

COMMON APPLICATIONS:

- Sealing traffic bearing expansion joint openings in parking structures, stadiums, plaza decks and other open-air structures



Willseal Protector Plates

Straight

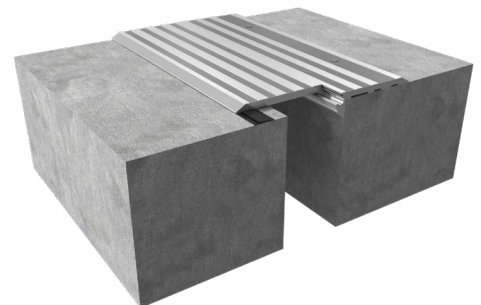
An aluminum cover plate designed for covering expansion joint openings in floors where an aesthetically pleasing appearance is needed.

Hinged

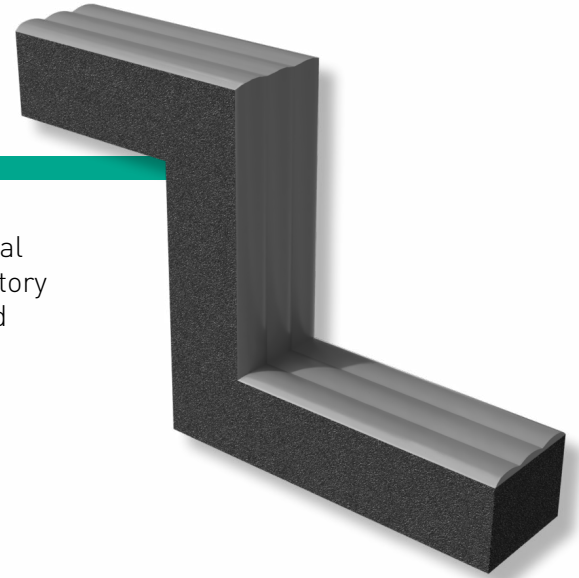
Designed for expansion joint openings without conventional block-outs. This series can accommodate vertical offsets in opposing concrete decks and multi-directional seismic movement. Available for slab-to-slab and slab-to-wall connections.

Flex

Designed for covering expansion joint openings in high volume pedestrian and vehicular traffic areas. This series can accommodate vertical offsets in opposing concrete decks and multi-directional seismic movement. Available for slab-to-slab and slab-to-wall connections.



Factory Transitions



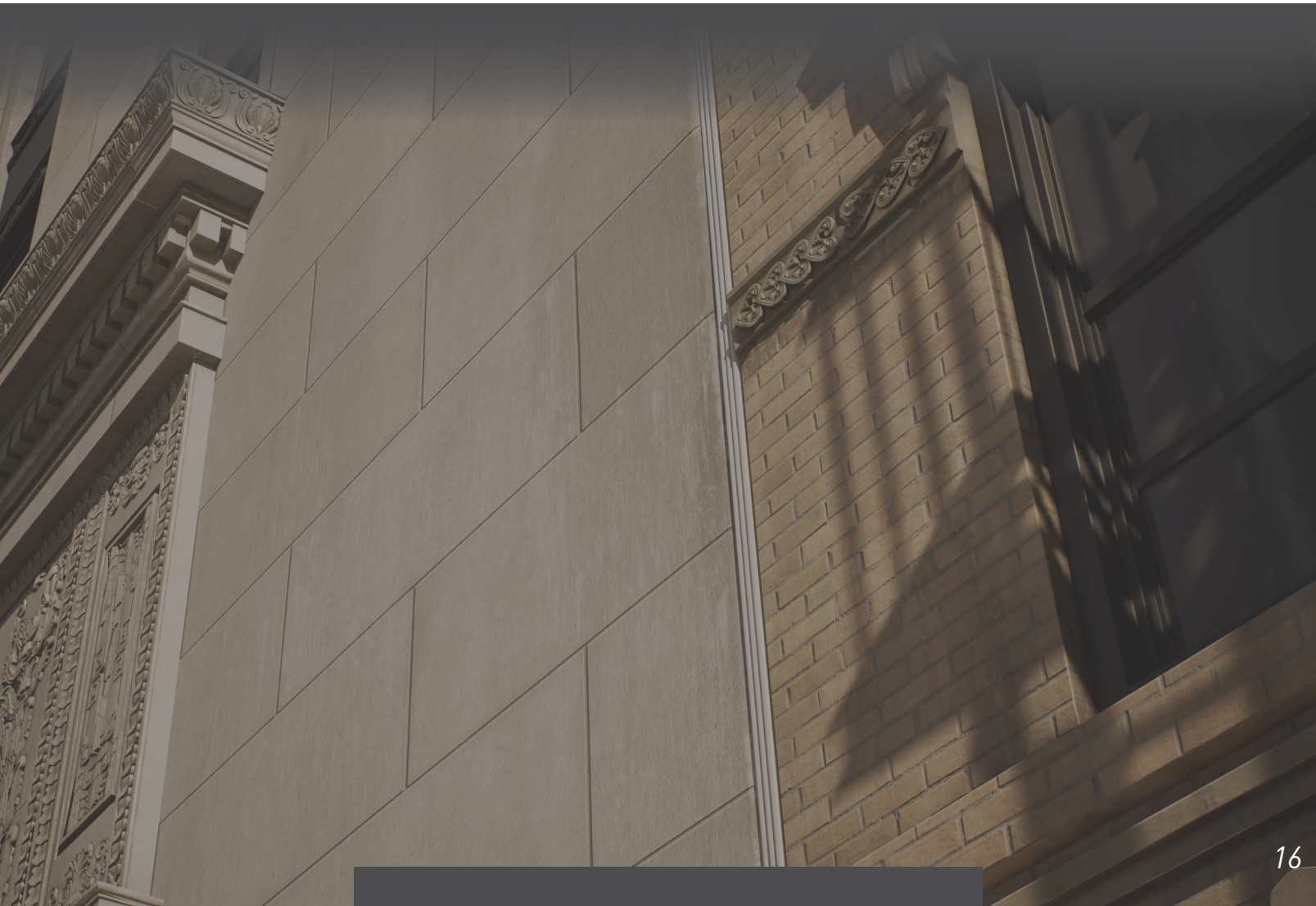
Willseal Patented-Protected Factory Transitions provide a watertight seal that accommodates directional changes that occur in construction. Factory Transitions are offered in Willseal Seismic, 250, Coreseal and Fire-rated products.

FEATURES & BENEFITS:

- Factory cut and welded
- Watertight seal
- Reduce labor and waste
- Custom sizes and configurations are available

COMMON APPLICATIONS:

- Floor to floor
- Floor to wall
- Treads and risers



Proglaze® ETA

Proglaze® ETA is a pre-engineered translucent silicone transition assembly for junctions between assemblies throughout the building envelope. It is comprised of a flat, ribbed silicone extrusion which is adhered with Spectrem® 1 Silicone Sealant to ensure a durable connection and positive seal.

FEATURES & BENEFITS:

- Can span and seal across irregular geometries
- Translucent silicone allows installers to verify a complete seal
- Variety of sizes available
- Durable, flexible connection between components

COMMON APPLICATIONS:

- Roof-to-wall, window-to-wall and foundation-to-wall connections
- Expansion, drift and control joints
- Floor deflection joints
- Corner connections
- Penetrations



Spectrem® Simple Seal

Spectrem® Simple Seal high-performance silicone extrusions are designed to seal joints and gaps ranging from low to high-movement conditions. Spectrem Simple Seal provides flexible, tear-resistant properties that will help to protect your building from air and moisture penetration.

FEATURES & BENEFITS:

- Easy installation reduces time and labor costs
- Superior flexibility and +/- movement capabilities
- High strength provides durability and excellent tear resistance

COMMON APPLICATIONS:

- Window/door perimeters
- Dryvit / EIFS joints
- Parapet walls
- Skylights
- Aluminum window seals
- Transition seals
- Curtain wall joints
- Sheet metal roof joints and other lap joints



(Accessory)

ExoAir® Flex Foam

ExoAir® Flex Foam is a single-component, high performance, gun-grade polyurethane foam that performs as a flexible thermal barrier. With an industry leading movement range of +/-15%, ExoAir Flex is CFC-free and can be applied over a wide temperature range, making it a reliable, four-season solution.

FEATURES & BENEFITS:

- Cures to a very fine, highly-elastic foam structure
- Thermal insulation in demanding, high-movement areas
- Absorbs up to 3 times more movement than competing expandable foams
- The industry's only true flexible foam
- Adheres to most common building materials

COMMON APPLICATIONS:

- Thermal and sound barrier around window/door perimeters
- Window-to-air barrier connection points



(Accessory)

ExoAir® LEF

ExoAir® LEF is single-component, CFC-free, all-season, high performance, gun-grade polyurethane foam that performs as a thermal barrier. It is an effective joint filler in hidden applications, and is highly-effective around window and door frame joints.

FEATURES & BENEFITS:

- Effective as a thermal and sound barrier
- Low pressure build
- Low water absorption
- Tack-free in 10 minutes and resistant to decay and heat

COMMON APPLICATIONS:

- Gaps around penetrations and in cavity walls
- Joint filler in hidden applications
- Around window and door frame joints





 **TREMCO**
Construction Products Group

 **Dryvit**

 **Nudura**

 **Prebuck**

 **TREMCO**

 **Willseal**





and



are part of the Tremco Construction Products Group.



Tremco Construction Products Group (CPG) brings together Tremco CPG Inc. and its Dryvit and Nudura brands; Willseal; Prebuck LLC; Tremco Barrier Solutions, Inc.; Weatherproofing Technologies, Inc. and its Pure Air Control Services and Canam Building Envelope Specialists offerings; and Weatherproofing Technologies Canada, Inc.

Our products and services empower teams to develop, design, engineer and operate structures that are more efficient to build and maintain, are virtually impervious to the elements and can provide any look desired.

Use of the ® symbol indicates registration with the US Patent & Trademark Office and the Canadian Intellectual Property Office.

© Tremco CPG Inc. 2024

L-0007/0924