



# EXTRUDED RUBBER PRODUCTS CATALOG

*Silicone / EPDM / Peroxide EPDM / SCR-900*







## TREMCO - THE GLAZING EXPERTS

Tremco Sealants and Waterproofing has provided extruded rubber products and glazing sealants to the residential and commercial markets for over 40 years. Tremco provides customers with a myriad of solutions for all types of glazing systems including, glazing tapes, glazing sealants and extruded and molded rubber products. Choose from over 20,000 different profiles in our portfolio, or let our Design Engineering team assist you in creating new profile.

Protection doesn't stop at the glazing assembly. Preventing air and moisture infiltration at the transitions from window or curtain wall assembly to the adjacent wall assembly is critical to energy efficiency of the building and creating a comfortable environment for its occupants. Any breakdown in the assemblage could allow warm air to enter the building and condense in the wall cavity, leading to deterioration of the building envelope components and increased energy consumption and negatively impacting the indoor air quality. Tremco offers a full line of transition and sealant solutions, critical elements creating and maintaining the building envelope.

## AN EVOLUTION OF GLAZING

Glazing products for use in commercial construction applications have dramatically evolved over time. Window units have become larger, higher performing glass is available, and performance standards have increased - all placing a greater demand on the glazing materials used to seal and support the glass to or within the surrounding metal.

To meet that demand, Tremco has made a point to evolve with the industry. This evolution culminated in the development of our Sustainable Building Solutions Test Facility, which is designed for testing connection points in wall assemblies, as well as other building and design challenges.

Tremco is able to create any custom material that would go into the glazing pocket - whether it be a prototype or a full finished system. Certain applications may utilize Tremco's in-house 3D printing technology to create prototypes during product development.

## POWER of ONE

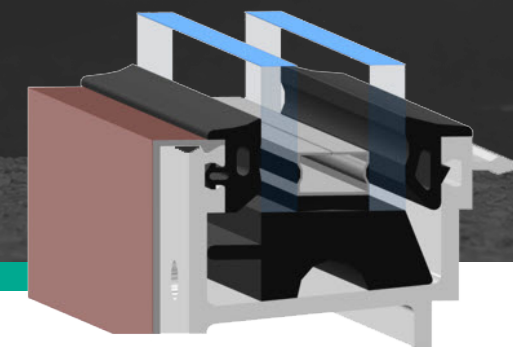
Your source for new construction, renovation or restoration. Commercial, residential or industrial structures. In-field or in-plant.

Structures with systems from Tremco CPG companies are easier to build and maintain, virtually impervious to the elements, and can provide any look desired.

Tremco CPG companies' six-sided solutions deliver demonstrable performance at the lowest possible life-cycle cost and stop leaks before they happen through ongoing maintenance programs.

Building owners gain the peace of mind that comes with industry-leading system warranties — all from a single-source platform.

# CURTAIN WALL WEDGE



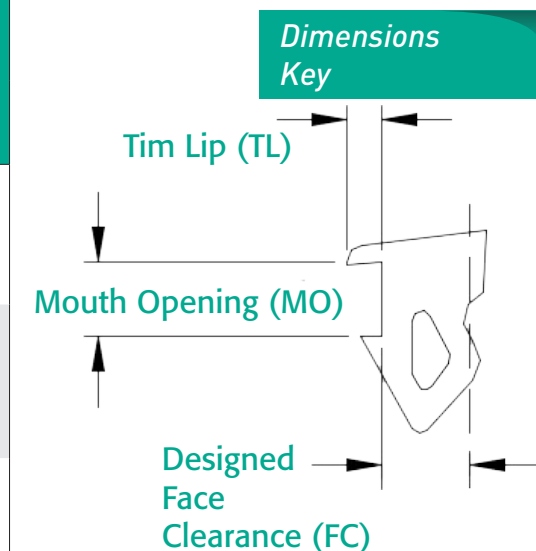
### Product Description

This dense rubber extrusion is often installed on the opposing side of a compressible gasket within the glazing pocket, such as a Pre-Set Sponge gasket.

### Common Applications

New construction, replacement gaskets for restoration.

TREMCO NUMBER	PRODUCT DIMENSIONS			PROFILE (NOT TO SCALE)	DIMENSIONS	
	FC	MO	TL		Ft per box	Box/Pallet
TR-2280E	.188	.203	.095		1500	5
TR-0643E	.250	.213	.100		500	39
TR-0518E	.288	.212	.250		1000	5
TR-1746E/S	.312	.200	.265		750	5
TR-2033E	.350	.210	.260		600	5
TR-8003E	.375	.210	.095		375	5



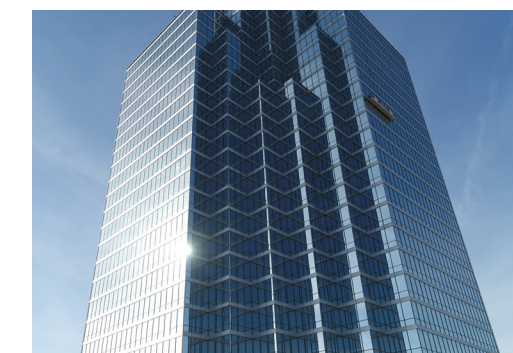
Compound Designations  
(last letter in part numbers)

- E = EPDM
- P = Peroxide EPDM
- W = SCR-900
- S = Silicone

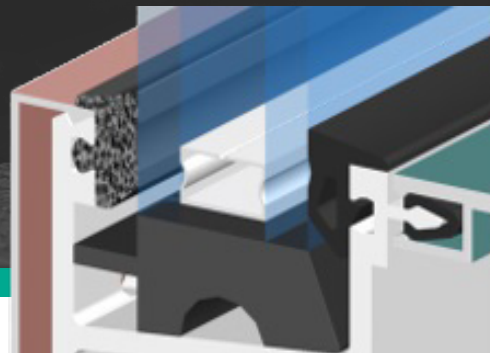
### Application and Installation Notes

The wedge gasket forces the infill into the compressible gasket on the opposing side of infill to create a compression seal. Care should be taken to ensure proper fit to matting metal features to ensure proper retention within the glazing pocket.

70 Durometer Shore A is a typical hardness for a wedge gasket.



# PRE-SET SPONGE EXTRUSIONS



## Product Description

Manufactured to industry standard, closed-cellular Pre-Set Sponge gaskets accommodate a wide range of manufacturing tolerances associated with production of glass and metal to create a compression seal within the glazing pocket.

## Common Applications

New construction, replacement gaskets for restoration.

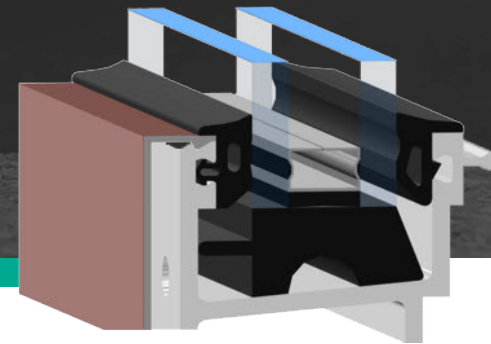
TREMCO NUMBER	PRODUCT DIMENSIONS			PROFILE (NOT TO SCALE)	DIMENSIONS	
	FC	DCL	TL		Ft per box	Box/Pallet
TR-0409E	.125	.250	0		500	15
TR-2205E	.188	.250	.125		1500	5
TR-2691E	.250	.250	.100		1000	5
TR-2181E	.312	.250	0		1000	5
TR-2692E	.350	.250	0		1000	5
TR-3858E	.375	.250	0		300	5

## Application and Installation Notes

The Pre-Set Sponge gasket is named for its place in the glazing installation sequence. It is installed before the glass at the interior of the glazing pocket. To complete the compression glazing seal, a dense rubber gasket is typically installed on the opposing side of the glass.



# POLY-WEJ EXTRUSIONS

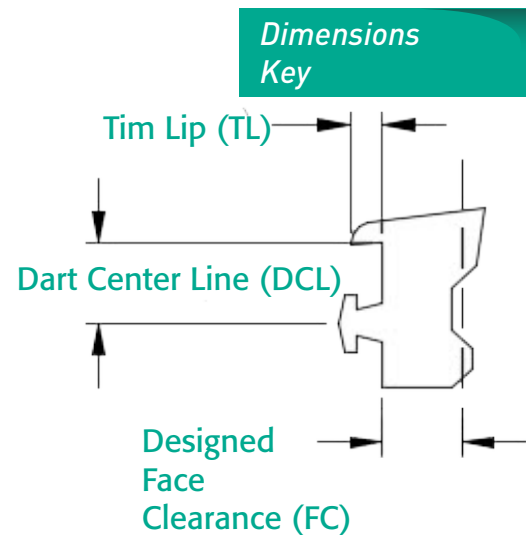


## Product Description

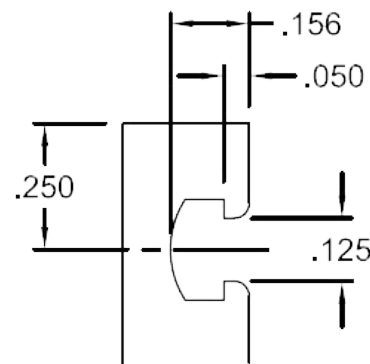
The Poly-Wej Dense profile is designed for use in dry/dry glazing systems used to properly space and support the glass or panel within the glazing pocket. Poly-Wej gaskets are typically installed after the infill is in place for new construction and restoration applications.

## Common Applications

Curtainwall, unitized, restoration, new construction, 2-sided structural, and other commercial applications.



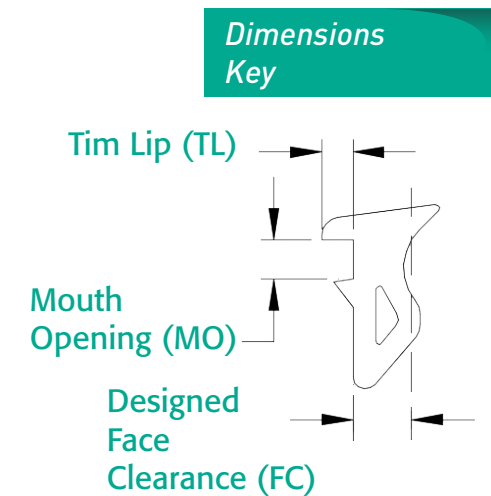
This metal configuration results in ideal engagements for gaskets shown.



**Compound Designations**  
(last letter in part numbers)

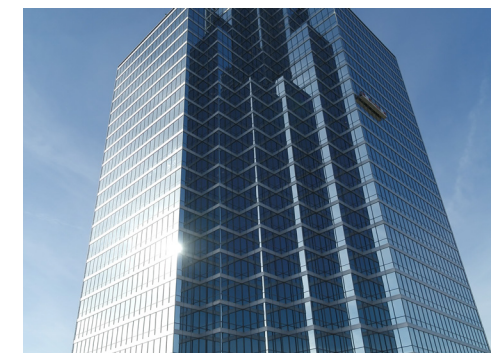
**E = Closed-Cellular EPDM Sponge**

TREMCO NUMBER	PRODUCT DIMENSIONS			PROFILE (NOT TO SCALE)	DIMENSIONS	
	FC	MO	TL		Ft per box	Box/Pallet
TR-3062E	.156"	.075"	.108"		200	5
TR-14289E, P, S	.188"	.100"	.127"		250	39
TR-5951S	.218"	.125"	.200"		250	39
TR-4506E, P, S	.250"	.120"	.200"		500	18
TR-14957E, S	.280"	.150"	.145"		250	39
TR-6431S	.312"	.180"	.140"		1000	5
TR-3091E	.350"	.270"	.135"		750	5
TR-10270E, P, S	.375"	.120"	.200"		150	5
TR-5058E	.438"	.135"	.135"		600	5



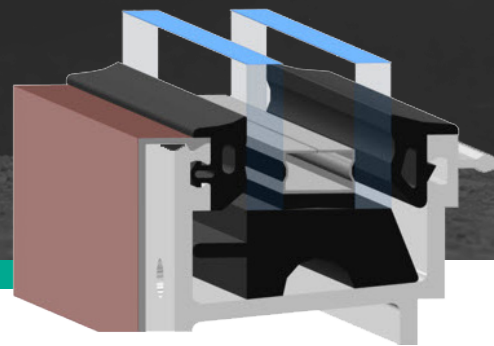
**Compound Designations**  
(last letter in part numbers)

**E = EPDM**  
**P = Peroxide EPDM**  
**W = SCR-900**  
**S = Silicone**





# PRE-SET DENSE EXTRUSIONS



## Product Description

The Preset Dense profile is designed for use in dry/dry glazing systems used to properly space and support the glass or panel in the glazing pocket. Preset Dense gaskets are installed before the infill is in place for new construction and restoration applications.

## Common Applications

Curtainwall, unitized, restoration, new construction, 2-sided structural, 4-sided structural, and other commercial applications.

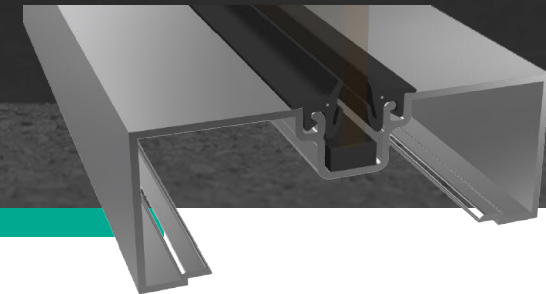
TREMCO NUMBER	PRODUCT DIMENSIONS			PROFILE (NOT TO SCALE)	DIMENSIONS	
	FC	DCL	TL		Ft per box	Box/Pallet
TR-4869W	.125	.250	.115		1000	5
TR-13640E, S	.188	.250	N/A		500	39
TR-4505E, P, S, W	.250	.250	.120		500	18
TR-5210E	.288	.250	0		1500	5
TR-13243E, S	.312	DCL	0		250	39
TR-4893W	.375	.250	.100		1000	5

## Application and Installation Notes

Pre-set dense extrusion are designed to be installed on both sides of the glass, such as a pressure bar system, or opposite a Poly-Wej gasket.



# TOP-LOAD DENSE EXTRUSIONS



## Product Description

The Top-Load profile is designed for use in storefront compression glazing systems to seal the glass within the glazing pocket and protect from air and water intrusion. Top Load gaskets are installed on both sides of infill for new construction and restoration applications. Stretch prevention cord engineered within the gasket available upon request.

## Common Applications

Storefront, 2-Sided Structural, and other light commercial.

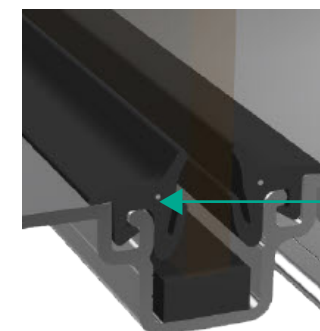
TREMCO NUMBER	PRODUCT DIMENSIONS		PROFILE (NOT TO SCALE)
	FC		
TR-11771E	.125		
TR-6206E	.188		
TR-11772E	.250		

## Application and Installation Notes

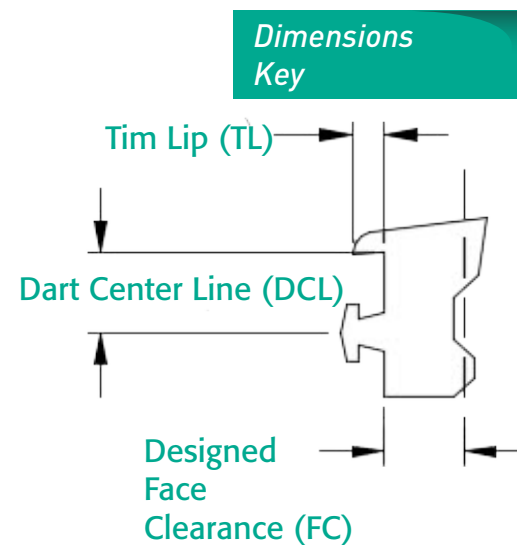
Anti-stretch cord prevents stretching when removed from packaging. This reduces likelihood of gasket relaxing from the corners during the life of the glazing system.

Silicone lubricant: Applied to top-load storefront gaskets during the extrusion process. This silicone water emulsion acts as an installation aid.

Caution: Do not use gaskets containing silicone lubricant on etched glass, or porous infills. Doing so may result in staining as the lubricant dries and collects dust and dirt.

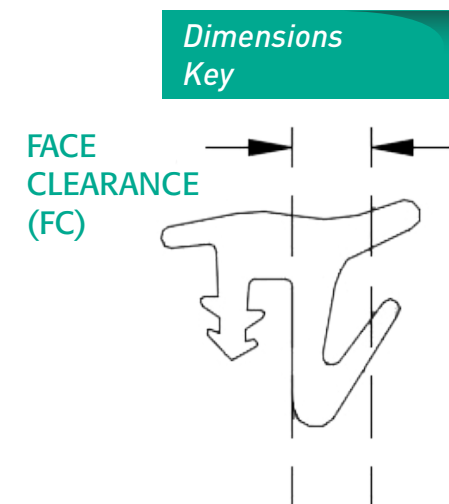


Anti-Stretch Cord



Compound Designations  
(last letter in part numbers)

- E = EPDM
- P = Peroxide EPDM
- W = SCR-900
- S = Silicone



Compound Designations  
(last letter in part numbers)

- E = EPDM



# COMPOUND DEFINITION CHEAT SHEET



# STANDARD ERP APPLICATION PROPERTIES

## EPDM (Ethylene-Propylene Diene Monomer)

A synthetic rubber elastomer that exhibits very good mechanical properties and can be used in a wide range of applications. EPDM gaskets are available in both a cellular or dense structure gasket.

EPDM Dense Rubber Extrusions are extruded and fabricated into gaskets and accessories (such as setting blocks, spacers and shims) for use in sealing and glazing applications in building construction.

## SILICONE

A high performing elastomer rubber that has excellent resistance to temperature, UV and Ozone. Silicone gaskets are available as a dense extrusion in a wide range of standard colors and can be custom colored upon request.

Silicone Dense Rubber Extrusions are extruded and fabricated into gaskets and accessories (such as setting blocks, spacers and shims) for use in sealing and glazing applications in building construction. Custom color matching is available.

## PEROXIDE EPDM (Ethylene-Propylene Diene Monomer)

A synthetic rubber elastomer that has peroxide introduced in the curing process giving the rubber additional chemical and thermal resistance and a lower compression set than EPDM.

Peroxide EPDM Rubber Extrusions are extruded and fabricated into gaskets and accessories (such as wedges, pre-set spacers, weatherstripping and shims) for use in glazing applications and other building joint applications.

## SCR900

A proprietary blend of elastomeric rubber compounds makes this silicone compatible rubber a cost-effective solution to silicone with the physical properties similar to silicone.

SCR-900 Silicone Compatible Rubber Extrusions are fabricated into gaskets and accessories (such as wedges, pre-set spacers, weatherstripping, setting blocks and shims) for use in glazing applications and other building joint applications.

## NEOPRENE

A synthetic rubber elastomer that provides good resistance to weather and UV. Neoprene gaskets are available in both a cellular or dense structure gasket.

Flame Retardant Dense Neoprene Rubber Extrusions are extruded and fabricated into gaskets and accessories (such as setting blocks, spacers and shims) for use in sealing and glazing applications in building construction.

APPLICATION / PROPERTY	Dense				Cellular		
	EPDM	Silicone	SCR900	Neoprene	Peroxide EPDM	EPDM Sponge	Neoprene Sponge
UV Resistance	Excellent	Excellent	Excellent	Very Good	Very Good	Excellent	Very Good
Ozone Resistance	Excellent	Excellent	Excellent	Very Good	Very Good	Excellent	Very Good
Flexibility in Low Temperatures	Very Good	Excellent	Excellent	Poor	Very Good	Very Good	Poor
Compression Set	Good	Excellent	Very Good	Good	Very Good	Good	Good
Color Stability	N/A	Excellent	N/A	N/A	N/A	N/A	N/A
Full Contact in Structural & Point Contact Glazing	N/A	Approved	Approved	N/A	N/A	N/A	N/A
Resistance to Tear	Very Good	Poor	Very Good	Good	Good	Good	Good
Resistance to Oil, Gas, Hydrocarbons	Poor	Poor	Poor	Good	Poor	Poor	Good
Resistance to Water and Steam	Excellent	Excellent	Excellent	Excellent	Excellent	Excellent	Excellent
Moldable into Corners	Yes	Yes	Yes	Yes	Yes	Yes	Yes
Flame Resistant Properties	N/A	Available	N/A	Available	N/A	N/A	Available
Integral Non-Stretch Cord Option	Yes	N/A	N/A	N/A	N/A	N/A	N/A
Warranty	10	20	15	10	15	10	10
Complies with ASTM C1115, Type C	N/A	Pass	N/A	N/A	N/A	N/A	N/A
Complies with ASTM C509	N/A	N/A	N/A	N/A	N/A	Option I	Option I & II
Complies with ASTM C864	Option II	N/A	Option II	Option I & II	Option II	N/A	N/A



# STANDARD ERP APPLICATION PROPERTIES



# STANDARD ERP SILICONE COLOR CARD

TECHNOLOGY	Cellular	DUROMETER, SHORE A					
		40	50	60	70	80	85
Silicone		●	●	●	●	●	
EPDM	●	●	●	●	●		●
SCR900				●	●		
Neoprene	●		●	●	●		●
Peroxide EPDM				●	●		
Other	●						

## PRODUCT DESCRIPTION

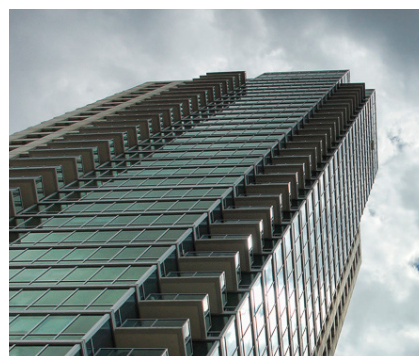
Extruded silicone rubber products provide weathertight seals that are resistant to sunlight and ozone while retaining the rubbers physical properties, even in the most extreme temperatures. Tremco offers 12 standard colors for an aesthetically pleasing appearance with a quick production process. Custom colors are available upon request at an extended lead time.

### STANDARD COLORS



Custom colors available upon request. Contact your local Tremco sales representative for pricing and availability.

All colors shown are approximate and may not reflect sheen or shade precisely, as varying amounts of aggregate will alter light-reflecting properties. Tremco always recommends a test patch to gain final color approval. Different lighting conditions can influence color appearance; for truer color please view in daylight. Some colors may require a minimum quantity. Custom colors are available upon request. Contact Tremco Customer Service for more information.



Tremco Commercial Sealants & Waterproofing | 3735 Green Road | Beachwood, OH 44122 | US: 800.852.9068 | CAN: 800.363.3213 | tremcosealants.com

Tremco Construction Products Group (CPG) brings together Tremco CPG Inc. and its Dryvit and Nudura brands; Willseal; Prebuck LLC; Tremco Barrier Solutions, Inc.; Weatherproofing Technologies, Inc. and its Pure Air Control Services and Canam Building Envelope Specialists offerings; and Weatherproofing Technologies Canada, Inc.



Use of the ® symbol indicates registration with the US Patent & Trademark Office and the Canadian Intellectual Property Office.  
© Tremco CPG Inc. 2022

0922/ERPCC

tremcocpg.com

[tremcocpg.com](http://tremcocpg.com)

