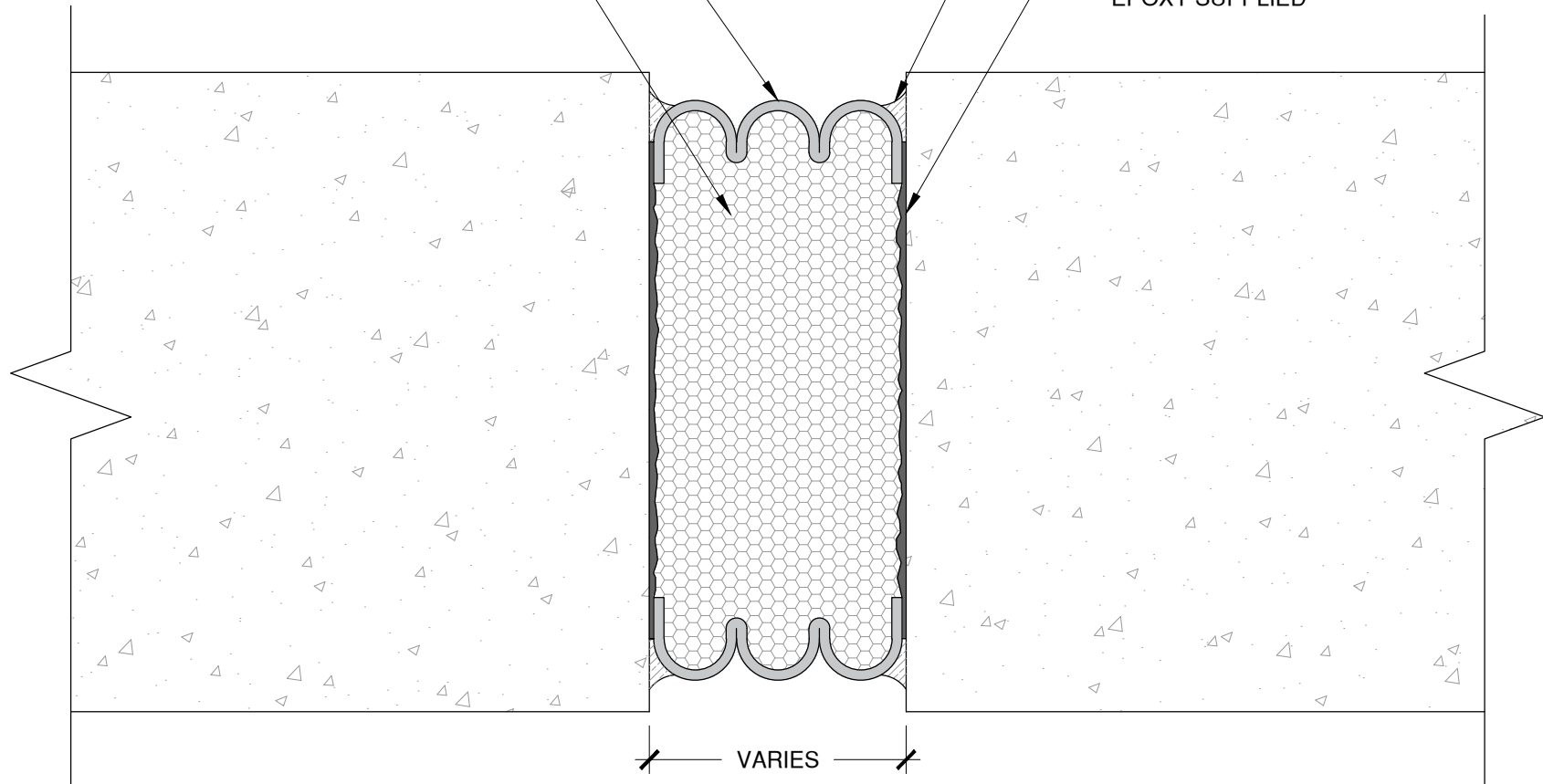


FACTORY APPLIED AND CURED  
TRAFFIC GRADE SILICONE

WILLSEAL MODIFIED ACRYLIC  
IMPREGNATED FIRE RATED  
MICROCELL FOAM

FIELD APPLIED SILICONE SEALANT  
(BOTH SIDES OF JOINT)  
SILICONE SEALANT SUPPLIED

FIELD APPLIED EPOXY  
(BOTH SIDES OF JOINT)  
EPOXY SUPPLIED



NOTES: RECESS JOINT  $\frac{1}{2}$ " FROM JOINT SURFACE.

AVAILABLE PERFORMANCE IN BOTH +/- 50% (100%) OR  
+/- 25% (50%) MOVEMENT FROM MEAN JOINT OPENING,  
OPTIONS MAY VARY.

*The architecture, engineering, and design of the project using the Willseal products are the responsibility of the project's design professional. All products and systems must comply with local building codes and standards. This detail is for general information and guidance only and Willseal specifically disclaims any liability for the use of this detail. The project design professional determines, in its sole discretion, whether this detail or a functionally equivalent detail is best suited for the project. This detail is subject to change without notice. Contact Willseal to ensure you have the most recent version.*

**Willseal FR-H**

Detail: Willseal FR-H 2H/3H Double Sided at Floor to Floor Application

File Name:

WFRH-FF-01

Drawn by: HDE

Checked by: AM

Scale: NTS

Date: 8/11/2022



Willseal Technical Support: 800-274-2813

[www.tremcocpg.com](http://www.tremcocpg.com)



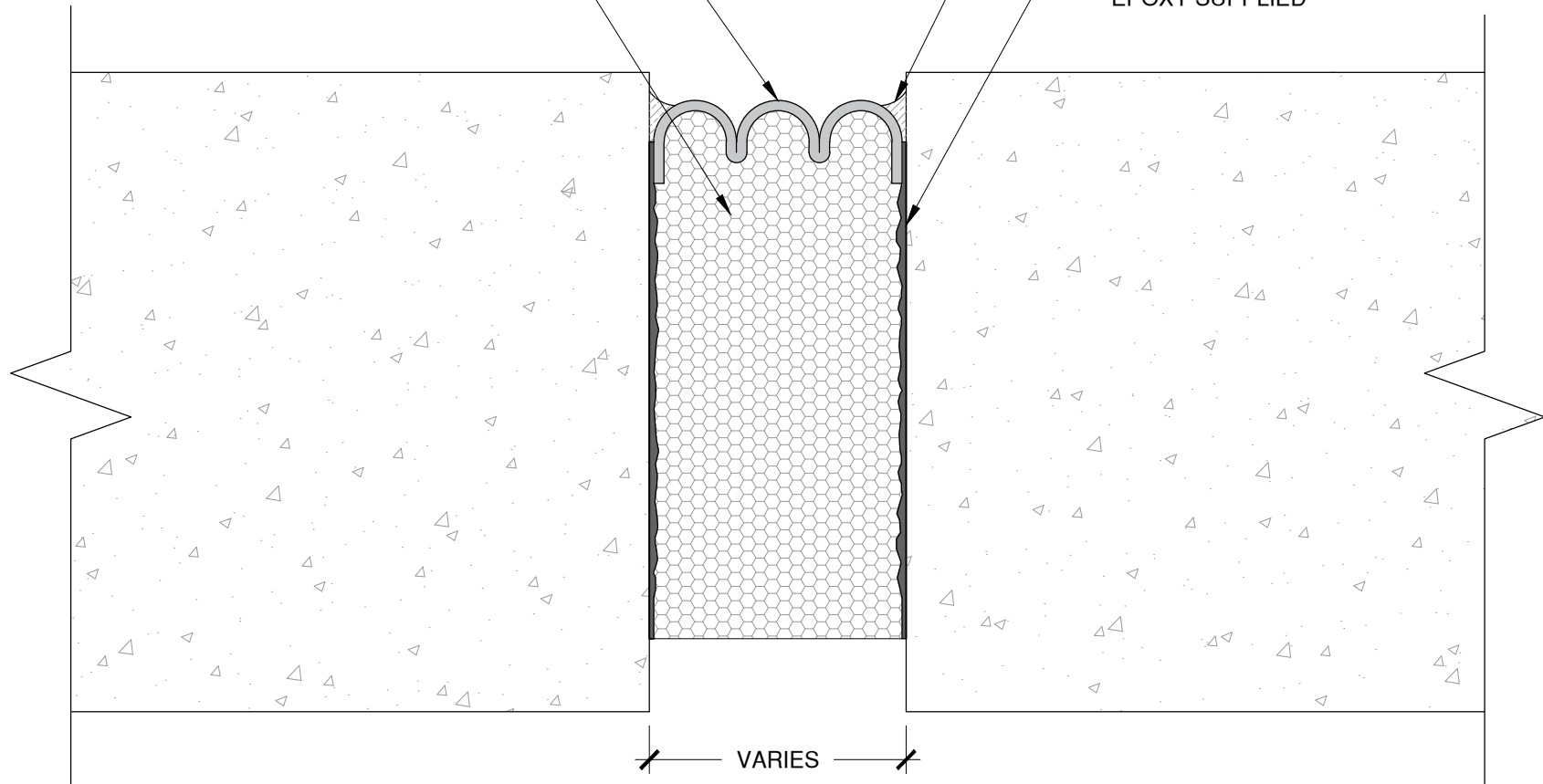
Construction Products Group

FACTORY APPLIED AND CURED  
TRAFFIC GRADE SILICONE

WILLSEAL MODIFIED ACRYLIC  
IMPREGNATED FIRE RATED  
MICROCELL FOAM

FIELD APPLIED SILICONE SEALANT  
(BOTH SIDES OF JOINT)  
SILICONE SEALANT SUPPLIED

FIELD APPLIED EPOXY  
(BOTH SIDES OF JOINT)  
EPOXY SUPPLIED



NOTES: RECESS JOINT  $\frac{1}{2}$ " FROM JOINT SURFACE.  
  
AVAILABLE PERFORMANCE IN BOTH +/- 50% (100%) OR  
+/- 25% (50%) MOVEMENT FROM MEAN JOINT OPENING,  
OPTIONS MAY VARY.

*The architecture, engineering, and design of the project using the Willseal products are the responsibility of the project's design professional. All products and systems must comply with local building codes and standards. This detail is for general information and guidance only and Willseal specifically disclaims any liability for the use of this detail. The project design professional determines, in its sole discretion, whether this detail or a functionally equivalent detail is best suited for the project. This detail is subject to change without notice. Contact Willseal to ensure you have the most recent version.*

**Willseal FR-H**



Willseal Technical Support: 800-274-2813

Detail: Willseal FR-H 2H/3H Single Sided at Floor to Floor Application

Drawn by: HDE

Checked by: AM

Scale: NTS

Date: 8/11/2022

File Name:

WFRH-FF-02

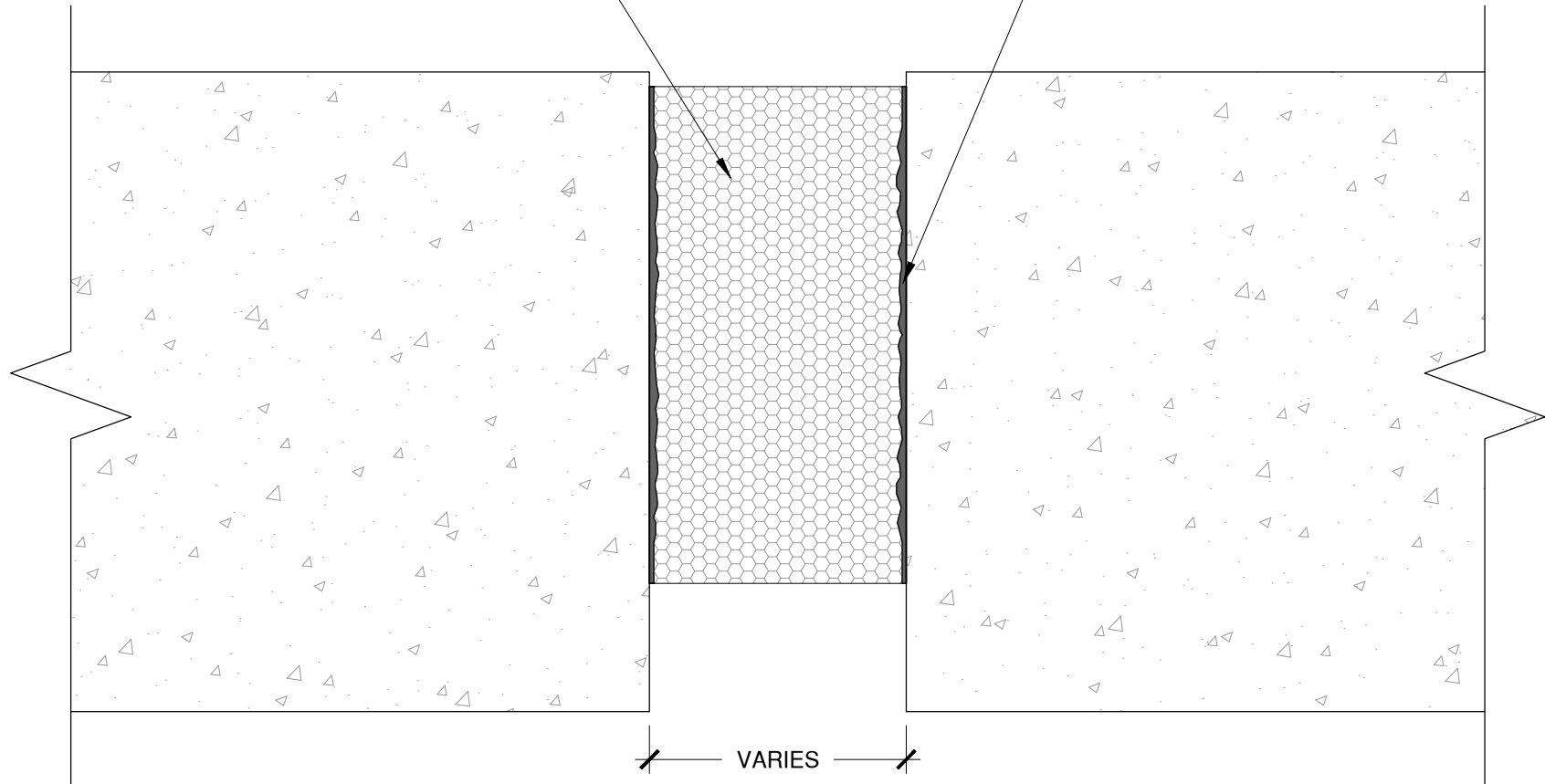


Construction Products Group

[www.tremcocpg.com](http://www.tremcocpg.com)

WILLSEAL MODIFIED ACRYLIC  
IMPREGNATED FIRE RATED  
MICROCELL FOAM

FIELD APPLIED EPOXY  
(BOTH SIDES OF JOINT)  
EPOXY SUPPLIED



NOTES: RECESS JOINT  $\frac{1}{2}$ " FROM JOINT SURFACE.

AVAILABLE PERFORMANCE IN BOTH +/- 50% (100%) OR  
+/- 25% (50%) MOVEMENT FROM MEAN JOINT OPENING,  
OPTIONS MAY VARY.

*The architecture, engineering, and design of the project using the Willseal products are the responsibility of the project's design professional. All products and systems must comply with local building codes and standards. This detail is for general information and guidance only and Willseal specifically disclaims any liability for the use of this detail. The project design professional determines, in its sole discretion, whether this detail or a functionally equivalent detail is best suited for the project. This detail is subject to change without notice. Contact Willseal to ensure you have the most recent version.*

**Willseal FR-H**



Willseal Technical Support: 800-274-2813

Detail: Willseal FR-H 2H/3H Uncoated at Floor to Floor Application

Drawn by: HDE

Checked by: AM

Scale: NTS

Date: 8/11/2022

File Name:

WFRH-FF-03



Construction Products Group

[www.tremcocpg.com](http://www.tremcocpg.com)

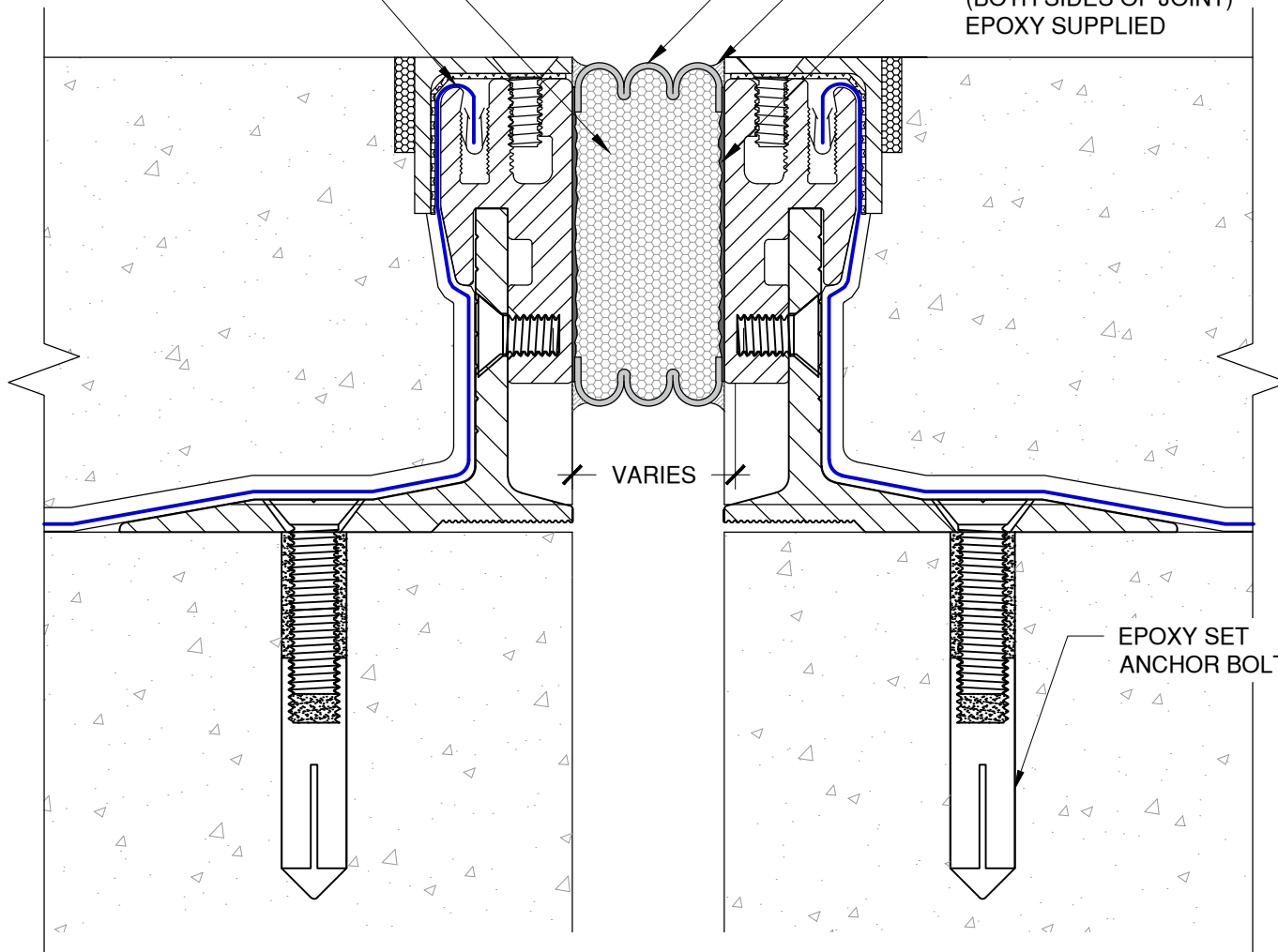
WILLSEAL MODIFIED ACRYLIC  
IMPREGNATED FIRE RATED  
MICROCELL FOAM

TREMPROOF 201/60/250GC  
VERIFY COMPATIBILITY IN FIELD

FACTORY APPLIED AND CURED  
TRAFFIC GRADE SILICONE

FIELD APPLIED SILICONE SEALANT  
(BOTH SIDES OF JOINT)  
SILICONE SEALANT SUPPLIED

FIELD APPLIED EPOXY  
(BOTH SIDES OF JOINT)  
EPOXY SUPPLIED



*The architecture, engineering, and design of the project using the Willseal products are the responsibility of the project's design professional. All products and systems must comply with local building codes and standards. This detail is for general information and guidance only and Willseal specifically disclaims any liability for the use of this detail. The project design professional determines, in its sole discretion, whether this detail or a functionally equivalent detail is best suited for the project. This detail is subject to change without notice. Contact Willseal to ensure you have the most recent version.*

**Willseal FR-H**



Willseal Technical Support: 800-274-2813

Detail: Willseal FR-H 2H Double Sided with Tremco Waterproofing Split Slab Application

Drawn by: HDE

Checked by: AM/WH

Scale: NTS

Date: 8/11/2022

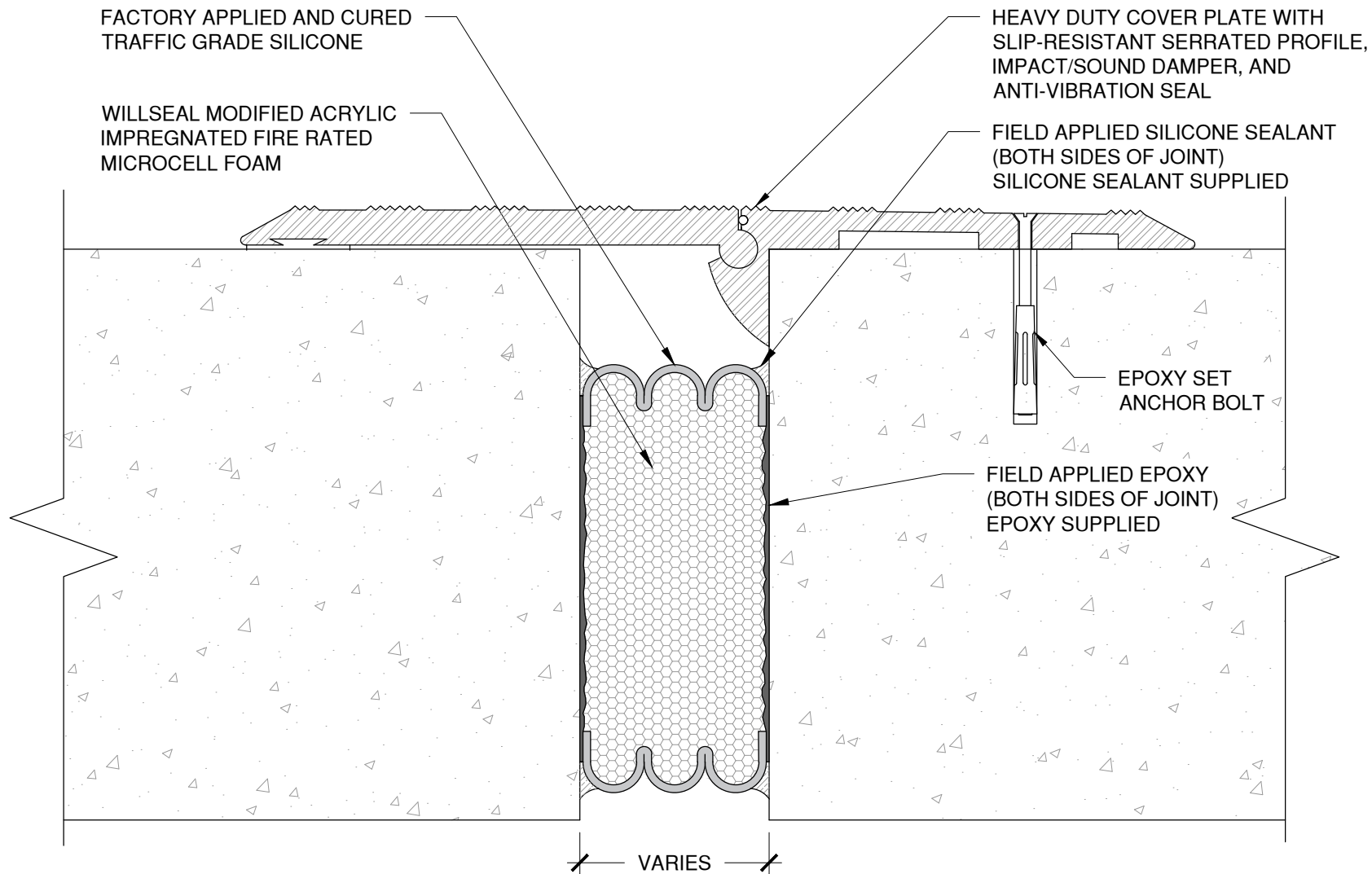
File Name:

WFRH-FF-04



Construction Products Group

[www.tremcocpg.com](http://www.tremcocpg.com)



NOTES: FIELD MEASURE FOR APPROPRIATE JOINT DEPTH TO ALLOW UNINTERRUPTED COVER PLATE HINGE ACCESS.

AVAILABLE PERFORMANCE IN BOTH +/- 50% (100%) OR +/- 25% (50%) MOVEMENT FROM MEAN JOINT OPENING, OPTIONS MAY VARY.

FOR COVER PLATE INSTALLATION, SEE SUPPLIED INSTRUCTIONS.

*The architecture, engineering, and design of the project using the Willseal products are the responsibility of the project's design professional. All products and systems must comply with local building codes and standards. This detail is for general information and guidance only and Willseal specifically disclaims any liability for the use of this detail. The project design professional determines, in its sole discretion, whether this detail or a functionally equivalent detail is best suited for the project. This detail is subject to change without notice. Contact Willseal to ensure you have the most recent version.*

**Willseal FR-H**



Willseal Technical Support: 800-274-2813

Detail: Willseal FR-H 2H/3H Double Sided at Floor to Floor Application with Heavy Duty Cover Plate

Drawn by: HDE

Checked by: AM

Scale: NTS

Date: 8/11/2022

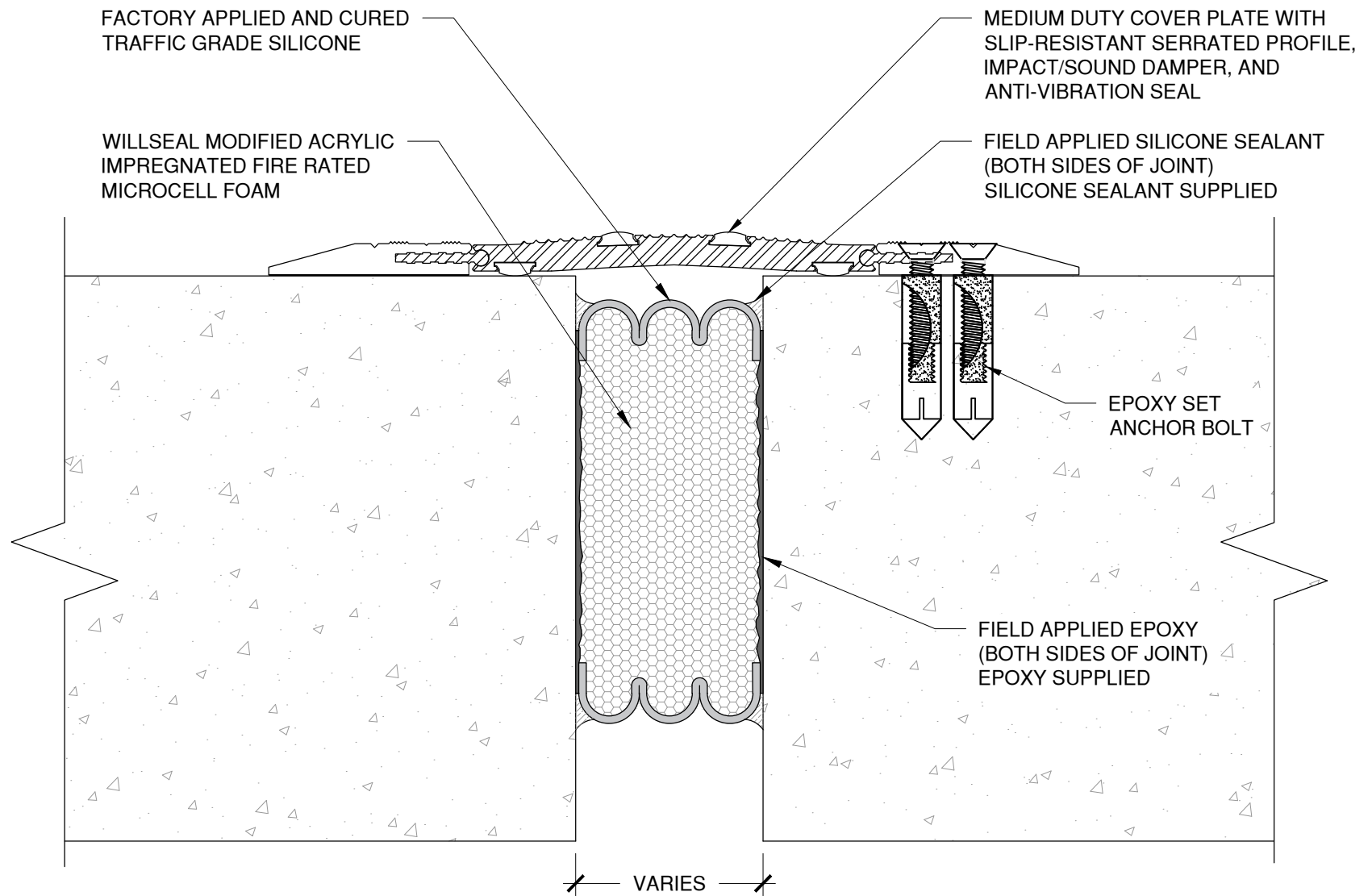
File Name:

WFRH-FF-CP-01



Construction Products Group



[www.tremcocpg.com](http://www.tremcocpg.com)

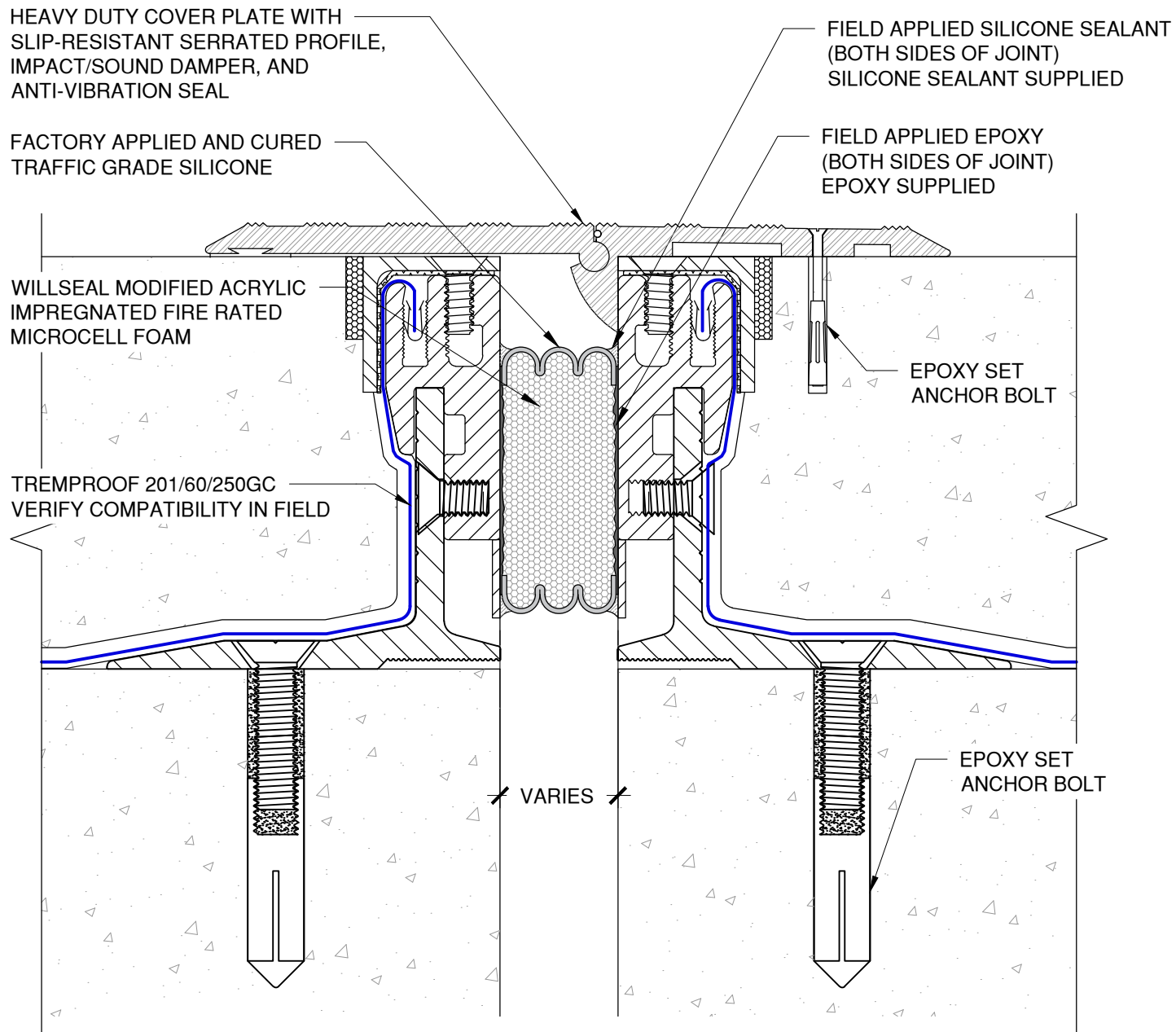


NOTES: RECESS JOINT  $\frac{1}{2}$ " FROM JOINT SURFACE.  
 FOR COVER PLATE INSTALLATION, SEE SUPPLIED INSTRUCTIONS.

*The architecture, engineering, and design of the project using the Willseal products are the responsibility of the project's design professional. All products and systems must comply with local building codes and standards. This detail is for general information and guidance only and Willseal specifically disclaims any liability for the use of this detail. The project design professional determines, in its sole discretion, whether this detail or a functionally equivalent detail is best suited for the project. This detail is subject to change without notice. Contact Willseal to ensure you have the most recent version.*

**Willseal FR-H**

 Willseal Technical Support: 800-274-2813	Detail: Willseal FR-H 2H/3H 50% Double Sided at Floor to Floor Application with Medium Duty Cover Plate			File Name:	 Construction Products Group
	Drawn by: HDE	Checked by: AM	Scale: NTS	Date: 8/11/2022	
<a href="http://www.tremcocpg.com">www.tremcocpg.com</a>					



NOTES: FOR COVER PLATE INSTALLATION, SEE SUPPLIED INSTRUCTIONS.

The architecture, engineering, and design of the project using the Willseal products are the responsibility of the project's design professional. All products and systems must comply with local building codes and standards. This detail is for general information and guidance only and Willseal specifically disclaims any liability for the use of this detail. The project design professional determines, in its sole discretion, whether this detail or a functionally equivalent detail is best suited for the project. This detail is subject to change without notice. Contact Willseal to ensure you have the most recent version.

**Willseal FR-H**

Detail: Willseal FR-H 2H Double Sided with Tremco Waterproofing at Split Slab Application with Heavy Duty Cover Plate

Drawn by: HDE

Checked by: AM/WH

Scale: NTS

Date: 8/11/2022

File Name:

WFRH-FF-CP-03

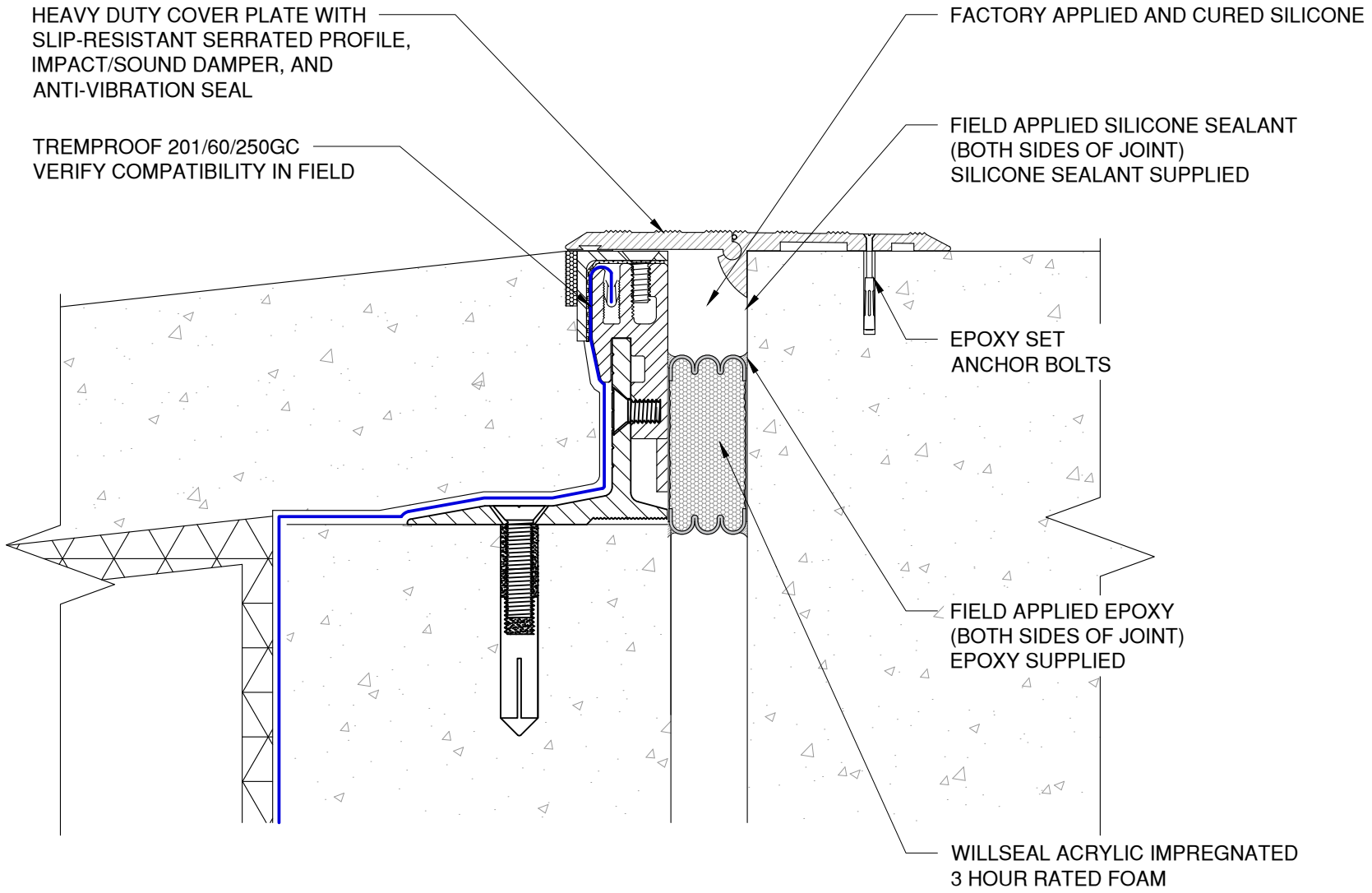


Willseal Technical Support: 800-274-2813

[www.tremcocpg.com](http://www.tremcocpg.com)



Construction Products Group



NOTE: FOR COVER PLATE INSTALLATION, SEE SUPPLIED INSTRUCTIONS.

The architecture, engineering, and design of the project using the Willseal products are the responsibility of the project's design professional. All products and systems must comply with local building codes and standards. This detail is for general information and guidance only and Willseal specifically disclaims any liability for the use of this detail. The project design professional determines, in its sole discretion, whether this detail or a functionally equivalent detail is best suited for the project. This detail is subject to change without notice. Contact Willseal to ensure you have the most recent version.

**Willseal FR-H**



Willseal Technical Support: 800-274-2813

Detail: Willseal FR-H 3H with Tremco Waterproofing at Split Slab Application with Heavy Duty Cover Plate

Drawn by: HDE      Checked by: AM/WH      Scale: NTS      Date: 5/21/2024

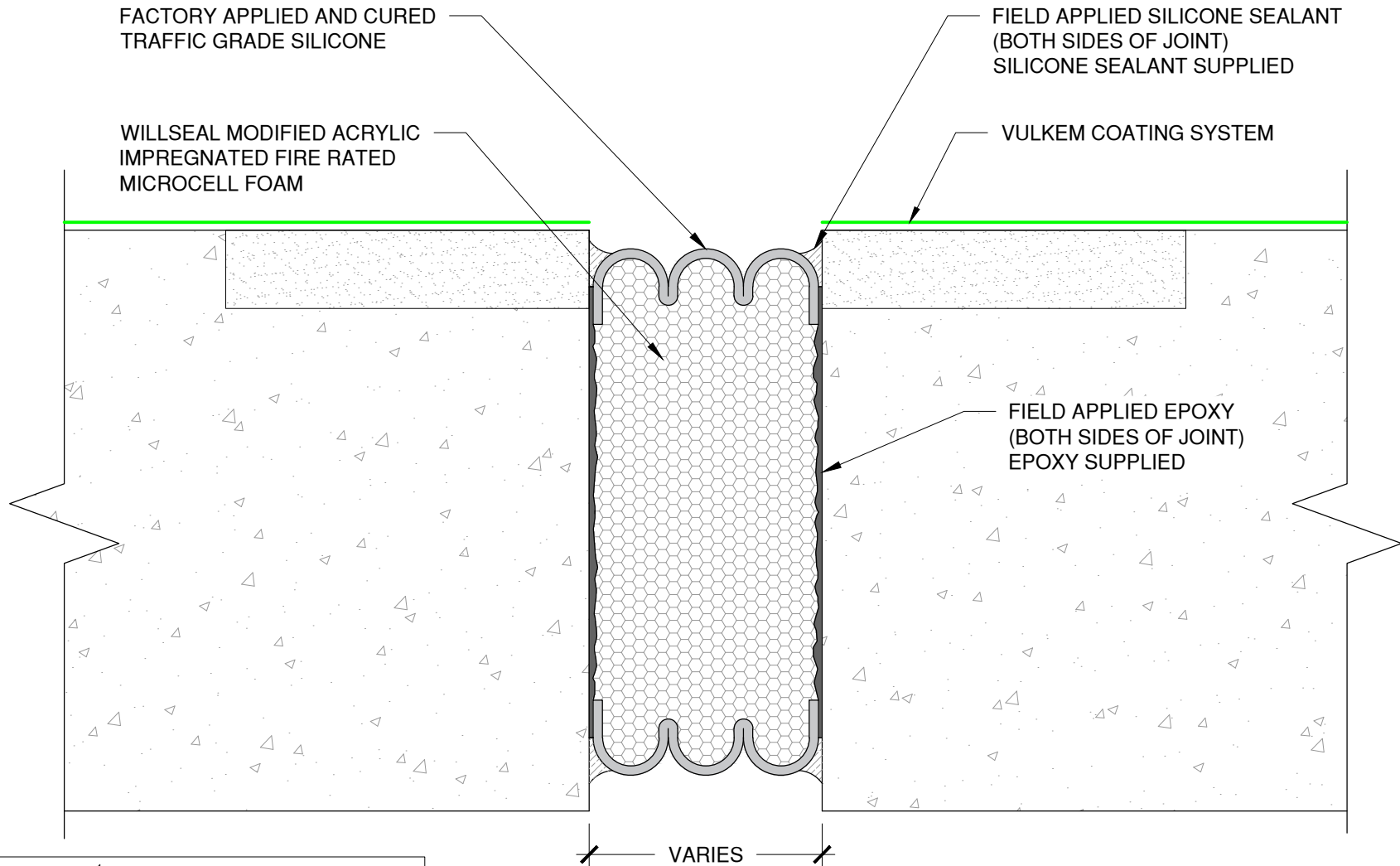
File Name:  
**WFRH-FF-CP-04**



Construction Products Group

[www.tremcocpg.com](http://www.tremcocpg.com)





NOTES: RECESS JOINT  $\frac{1}{2}$ " FROM JOINT SURFACE.

AVAILABLE PERFORMANCE IN BOTH +/- 50% (100%) OR +/- 25% (50%) MOVEMENT FROM MEAN JOINT OPENING, OPTIONS MAY VARY.

REFER TO TREMCO'S PUBLISHED APPLICATION INSTRUCTIONS FOR ACCEPTABLE JOINT SIDE WALL SUBSTRATE CONDITIONS PRIOR TO INSTALLATION.

*The architecture, engineering, and design of the project using the Willseal products are the responsibility of the project's design professional. All products and systems must comply with local building codes and standards. This detail is for general information and guidance only and Willseal specifically disclaims any liability for the use of this detail. The project design professional determines, in its sole discretion, whether this detail or a functionally equivalent detail is best suited for the project. This detail is subject to change without notice. Contact Willseal to ensure you have the most recent version.*

**Willseal FR-H**

Detail: Willseal FR-H 2H Double Sided with Vulkem Deack Coating System at Floor to Floor Application with Standard Blockout

File Name:

WFRH-FF-DC-01

Drawn by: HDE

Checked by: AM

Scale: NTS

Date: 8/11/2022

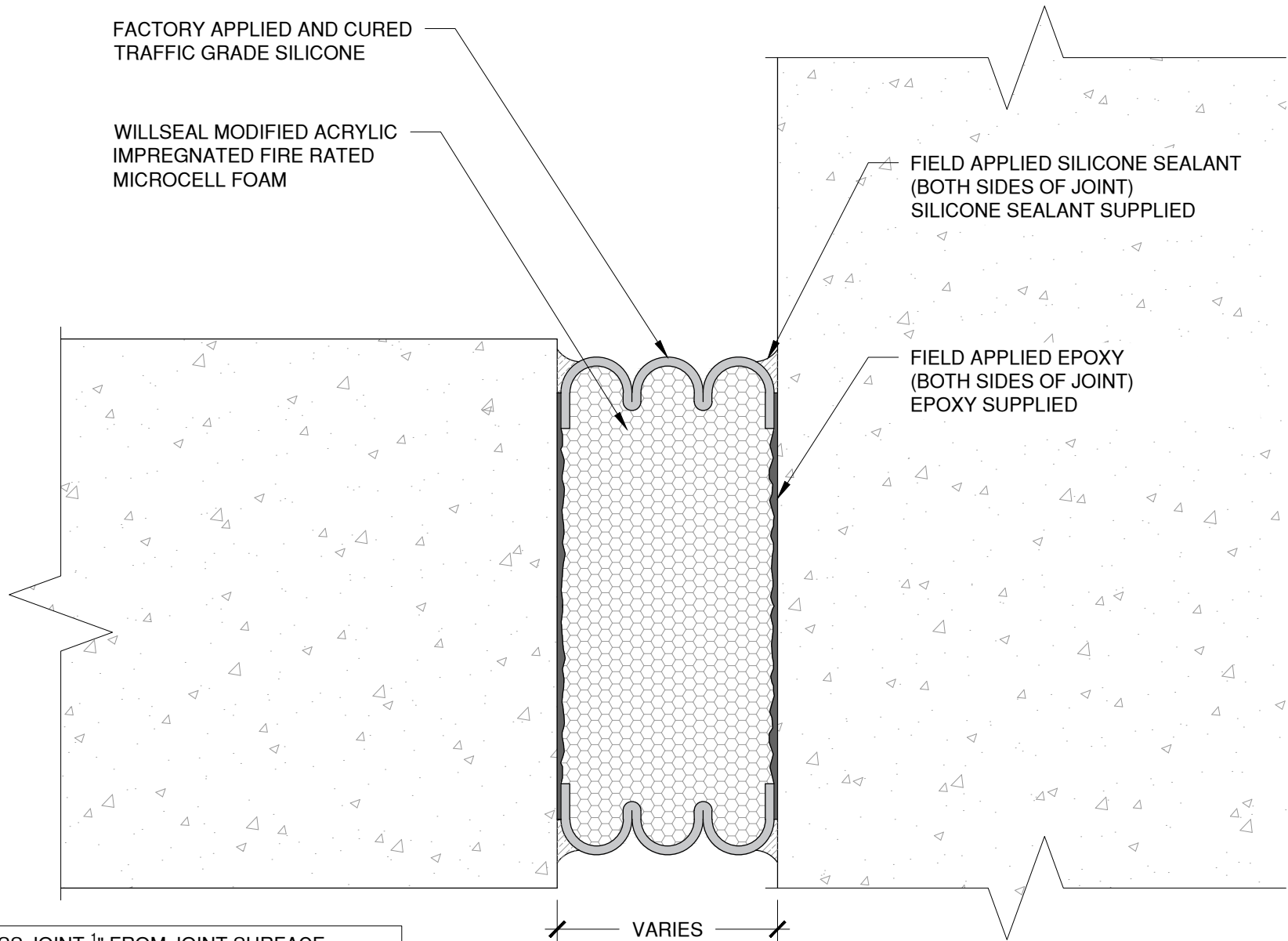


Willseal Technical Support: 800-274-2813

[www.tremcocpg.com](http://www.tremcocpg.com)



Construction Products Group



NOTES: RECESS JOINT  $\frac{1}{2}$ " FROM JOINT SURFACE.

AVAILABLE PERFORMANCE IN BOTH +/- 50% (100%) OR +/- 25% (50%) MOVEMENT FROM MEAN JOINT OPENING, OPTIONS MAY VARY.

*The architecture, engineering, and design of the project using the Willseal products are the responsibility of the project's design professional. All products and systems must comply with local building codes and standards. This detail is for general information and guidance only and Willseal specifically disclaims any liability for the use of this detail. The project design professional determines, in its sole discretion, whether this detail or a functionally equivalent detail is best suited for the project. This detail is subject to change without notice. Contact Willseal to ensure you have the most recent version.*

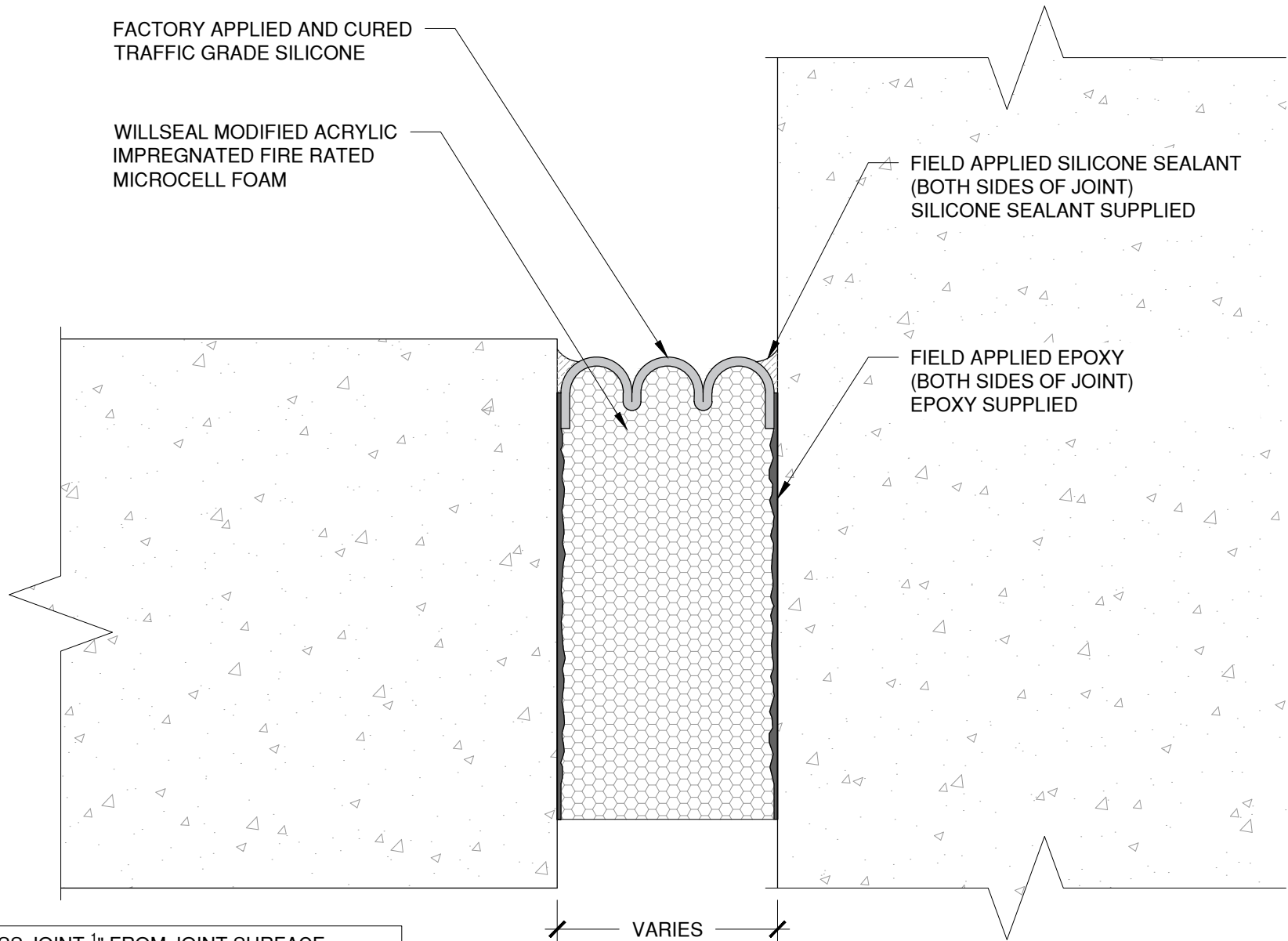
**Willseal FR-H**



Detail: Willseal FR-H 2H Double Sided at Floor to Wall Application			
Drawn by: HDE	Checked by: AM	Scale: NTS	Date: 8/11/2022
<a href="http://www.tremcocpg.com">www.tremcocpg.com</a>			

File Name:  
**WFRH-FW-01**





NOTES: RECESS JOINT  $\frac{1}{2}$ " FROM JOINT SURFACE.

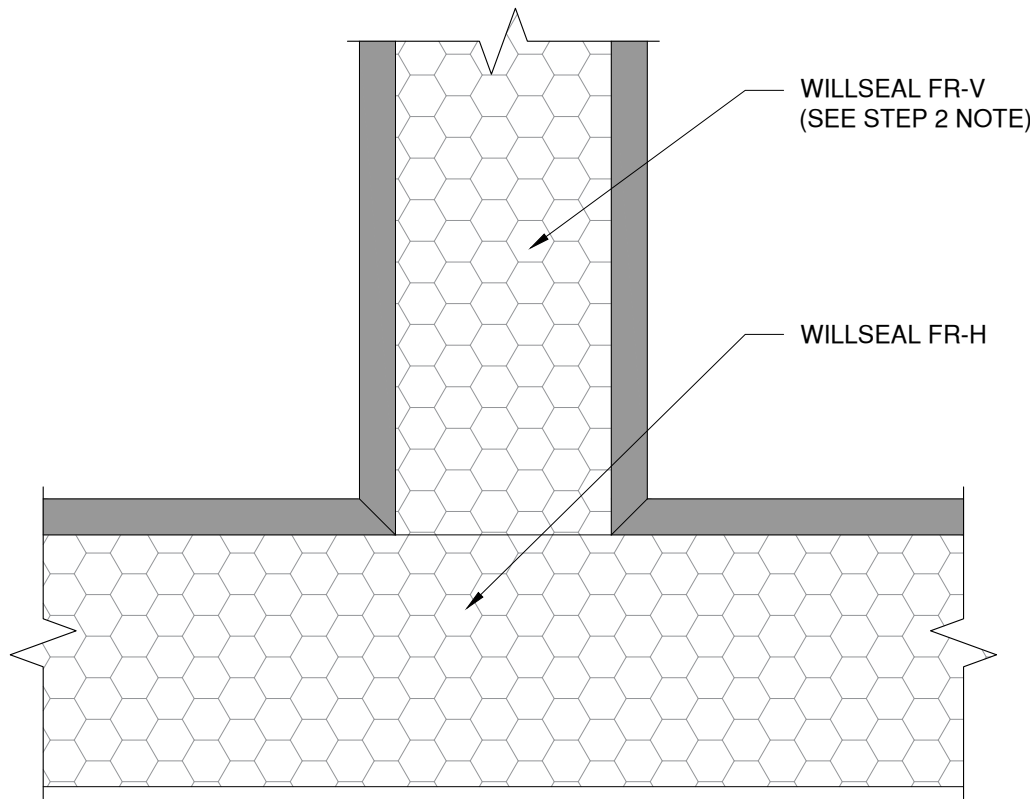
AVAILABLE PERFORMANCE IN BOTH +/- 50% (100%) OR +/- 25% (50%) MOVEMENT FROM MEAN JOINT OPENING, OPTIONS MAY VARY.

*The architecture, engineering, and design of the project using the Willseal products are the responsibility of the project's design professional. All products and systems must comply with local building codes and standards. This detail is for general information and guidance only and Willseal specifically disclaims any liability for the use of this detail. The project design professional determines, in its sole discretion, whether this detail or a functionally equivalent detail is best suited for the project. This detail is subject to change without notice. Contact Willseal to ensure you have the most recent version.*

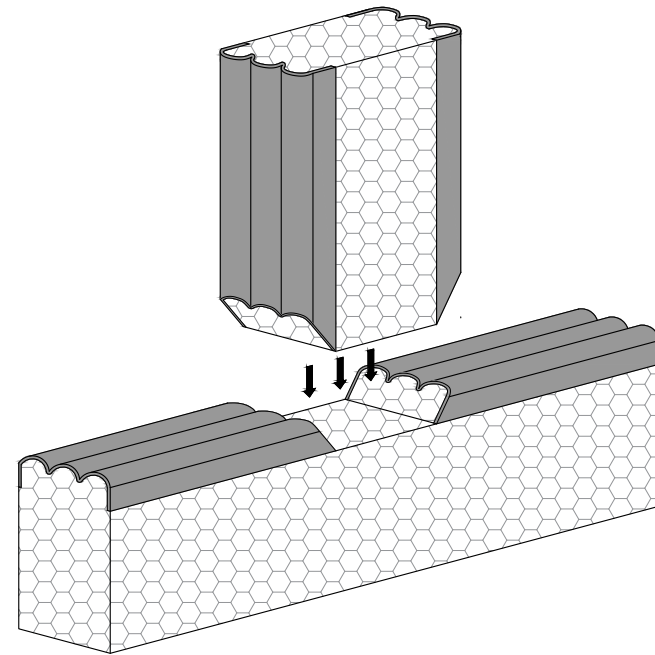
**Willseal FR-H**

Detail: Willseal FR-H 2H Single Sided at Floor to Wall Application				File Name:
Drawn by: HDE	Checked by: AM	Scale: NTS	Date: 8/11/2022	WFRH-FW-02
<a href="http://www.tremcocpg.com">www.tremcocpg.com</a>				





SECTION VIEW



ISOMETRIC VIEW

NOTE: REFER TO TREMCO'S PUBLISHED APPLICATION INSTRUCTIONS FOR ACCEPTABLE JOINT SIDE WALL SUBSTRATE CONDITIONS PRIOR TO INSTALLATION

WILLSEAL JOINT PREPARATION :

1. CUT THE WILLSEAL FR-H AT A 45° ANGLE THROUGH THE SILICONE FOLLOWED BY A HORIZONTAL CUT THROUGH THE FOAM SECTION. ENSURE THE LENGTH OF THE CUT ACCOMMODATES THE ADJOINING WILLSEAL FR-V.
2. CUT THE WILLSEAL FR-V AT A 45° ANGLE THROUGH THE SILICONE. INSTALL THE WILLSEAL FR-V WITH A 1/2" TO 1" OVERLAP INTO WILLSEAL FR-H TO MAINTAIN PROPER COMPRESSION.
3. APPLY SUPPLIED FIRESTOPPING SPLICE ADHESIVE TO THE ADJOINING FACES OF WILLSEAL FR-H AND WILLSEAL FR-V.
4. PRESS COMPONENTS TOGETHER AND INSTALL INTO JOINT.
5. TOUCH UP SILICONE BELLOWS USING SUPPLIED SILICONE.
6. RESUME STANDARD INSTALLATION INSTRUCTIONS.

*This detail is for general informational purposes, only. The project design professional determines, in its sole discretion, whether this detail or a functionally equivalent detail is best suited for the project with respect to any architecture, engineering, and design requirements, including any local building code requirements. If this document is not reviewed and the product is not approved for use by a licensed design professional, the customer agrees that the detail may contain substantive flaws requiring correction, and hereby releases Schul International Co., LLC d/b/a Willseal from any and all liability related to the design and installation of the product. This detail is subject to change without notice. Contact Willseal to ensure you have the most recent version.*

Willseal FR-H

Detail: Willseal FR-V to Willseal FR-H at T-Joint			File Name:
Drawn by: HDE	Checked by: AM/NF/JC	Scale: NTS	WFRH-FW-T-01
Revision #: 0	Revised by: NA	Date: 1/15/2025	

