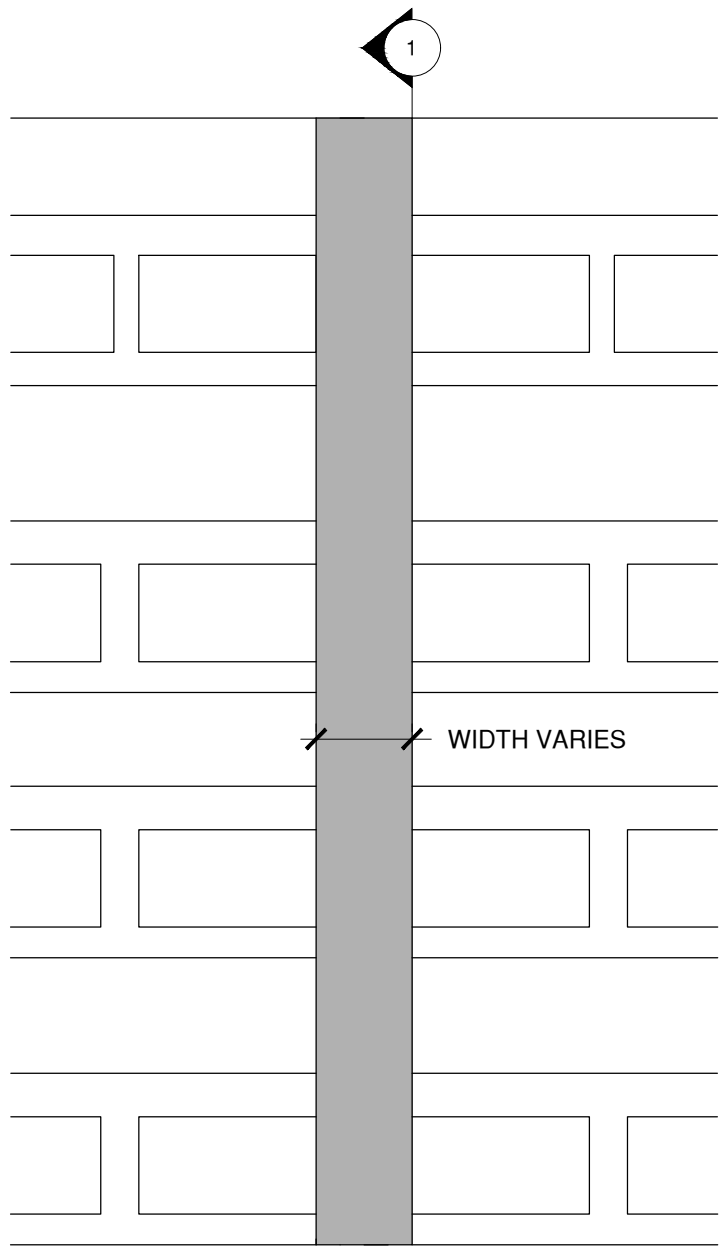
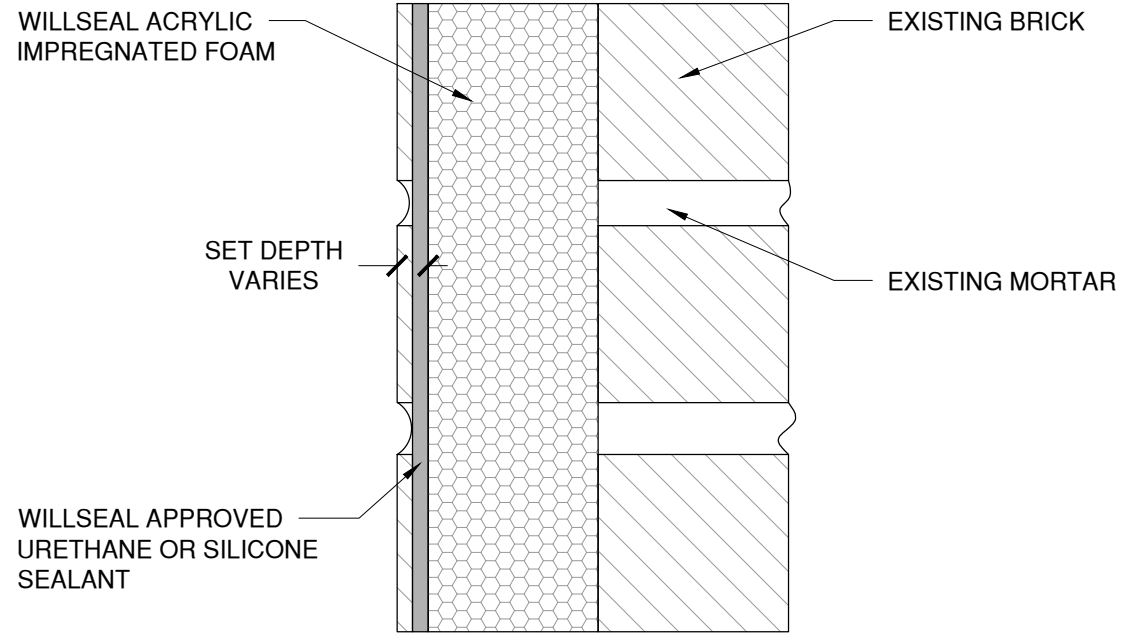


NOTE: REFER TO TREMCO'S PUBLISHED APPLICATION INSTRUCTIONS FOR ACCEPTABLE JOINT SIDE WALL SUBSTRATE CONDITIONS PRIOR TO INSTALLATION



EXISTING BRICK WALL



1 SECTION VIEW

*This detail is for general informational purposes only. The project design professional determines, in its sole discretion, whether this detail or a functionally equivalent detail is best suited for the project with respect to any architecture, engineering, and design requirements, including any local building code requirements. If this document is not reviewed and the product is not approved for use by a licensed design professional, the customer agrees that the detail may contain substantive flaws requiring correction, and hereby releases Tremco CPG Inc. from any and all liability related to the design and installation of the product. This detail is subject to change without notice. Contact Tremco to ensure you have the most recent version.*

**Willseal Backer Roll**



Detail: Willseal Backer Roll at Masonry Application - Secondary Seal				File Name:
Drawn by: KAB	Checked by: AM	Scale: NTS	Date: 11/13/2023	WBR-WW-02
<a href="http://www.tremcocpg.com">www.tremcocpg.com</a>				

