

NOTES: EXOAIR PRIMER MUST BE USED WITH EXOAIR 110.

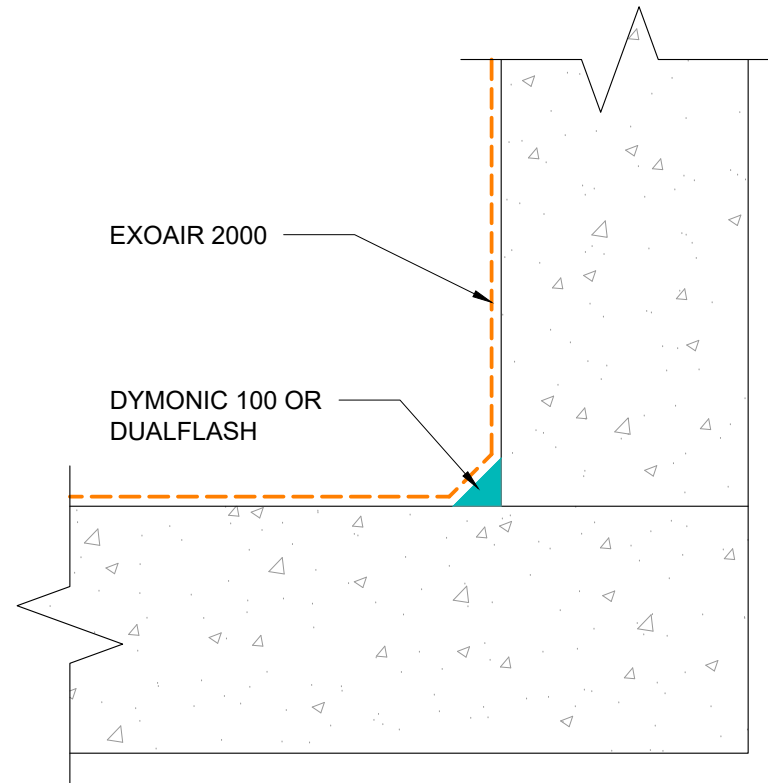
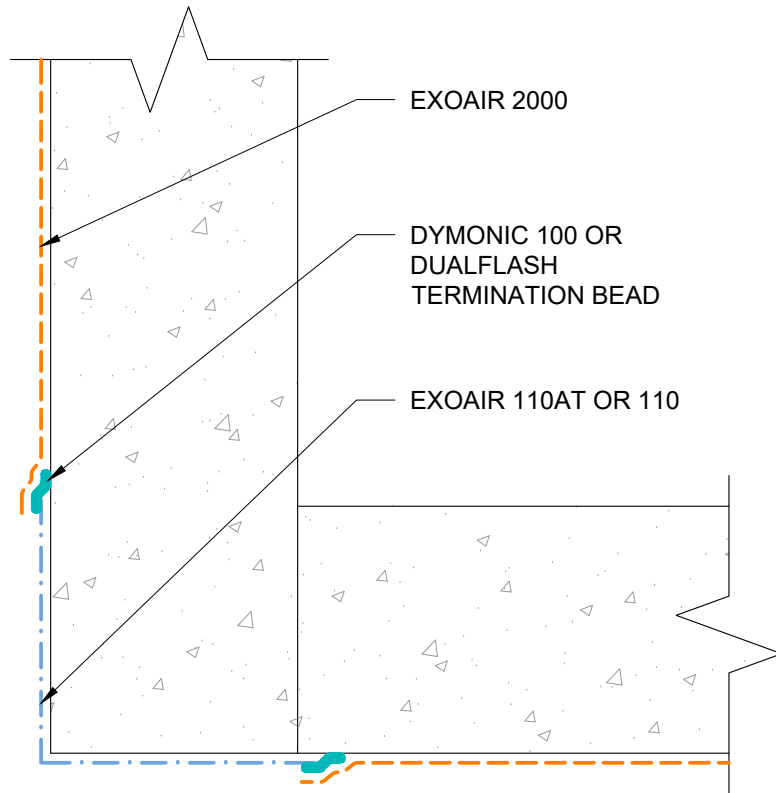
This detail is for general informational purposes only. The project design professional determines, in its sole discretion, whether this detail or a functionally equivalent detail is best suited for the project with respect to any architecture, engineering, and design requirements, including any local building code requirements. If this document is not reviewed and the product is not approved for use by a licensed design professional, the customer agrees that the detail may contain substantive flaws requiring correction, and hereby releases Tremco CPG Inc. from any and all liability related to the design and installation of the product. This detail is subject to change without notice. Contact Tremco to ensure you have the most recent version.

ExoAir 2000



Detail: Brick Lintel			File Name:
Drawn by: KAB	Checked by: SG	Scale: NTS	AVB-2000C-BL-01
Revision #: 00	Revised by: -	Date: 8/2/2024	





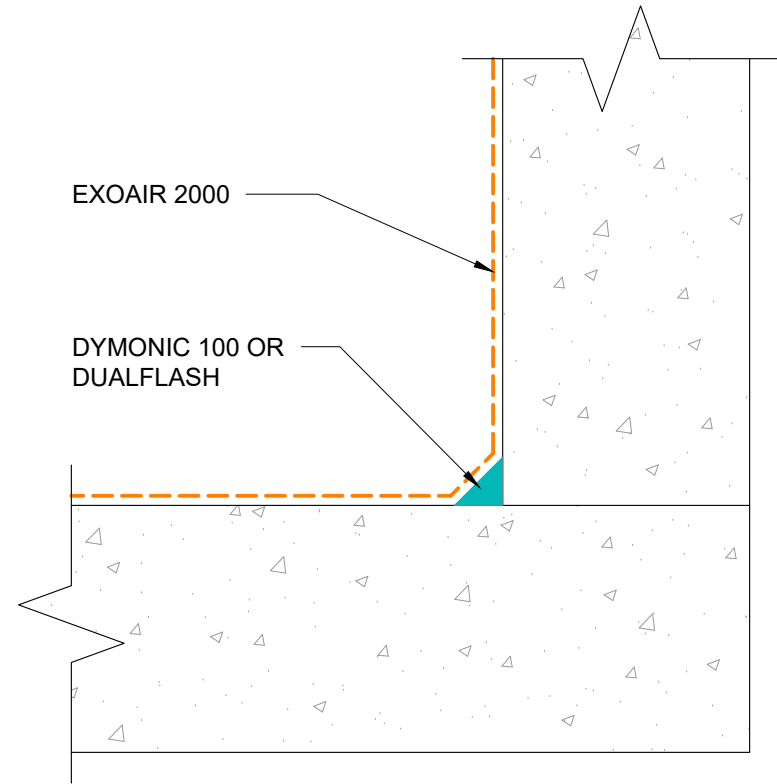
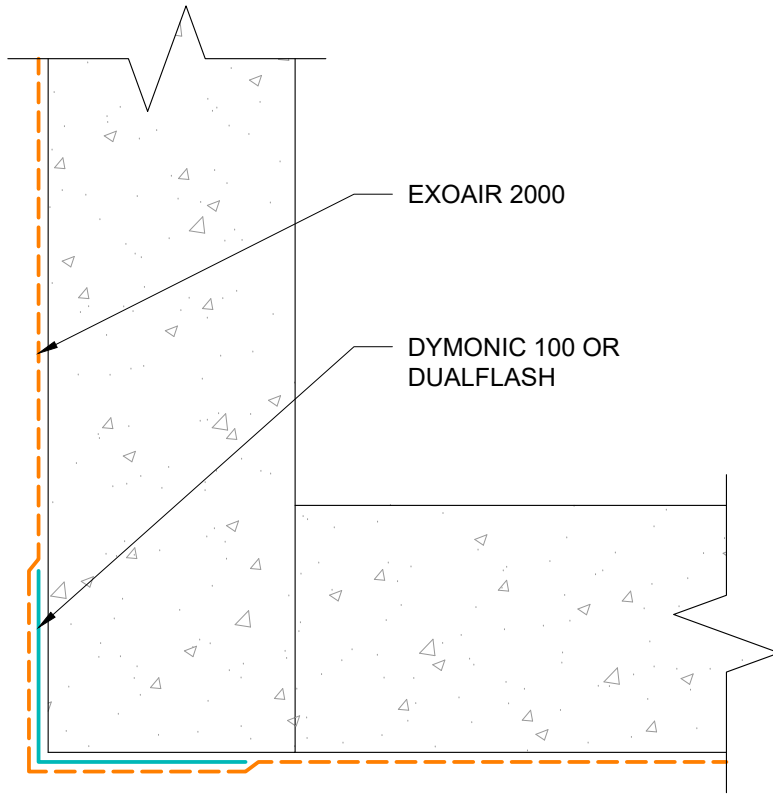
NOTES: EXOAIR PRIMER MUST BE USED WITH EXOAIR 110.

This detail is for general informational purposes only. The project design professional determines, in its sole discretion, whether this detail or a functionally equivalent detail is best suited for the project with respect to any architecture, engineering, and design requirements, including any local building code requirements. If this document is not reviewed and the product is not approved for use by a licensed design professional, the customer agrees that the detail may contain substantive flaws requiring correction, and hereby releases Tremco CPG Inc. from any and all liability related to the design and installation of the product. This detail is subject to change without notice. Contact Tremco to ensure you have the most recent version.

ExoAir 2000

Detail: Inside/Outside Corner - ExoAir 110/110AT Option			File Name: AVB-2000C-C-01
Drawn by: KAB	Checked by: SG	Scale: NTS	
Revision #: 00	Revised by: -	Date: 8/2/2024	





This detail is for general informational purposes only. The project design professional determines, in its sole discretion, whether this detail or a functionally equivalent detail is best suited for the project with respect to any architecture, engineering, and design requirements, including any local building code requirements. If this document is not reviewed and the product is not approved for use by a licensed design professional, the customer agrees that the detail may contain substantive flaws requiring correction, and hereby releases Tremco CPG Inc. from any and all liability related to the design and installation of the product. This detail is subject to change without notice. Contact Tremco to ensure you have the most recent version.

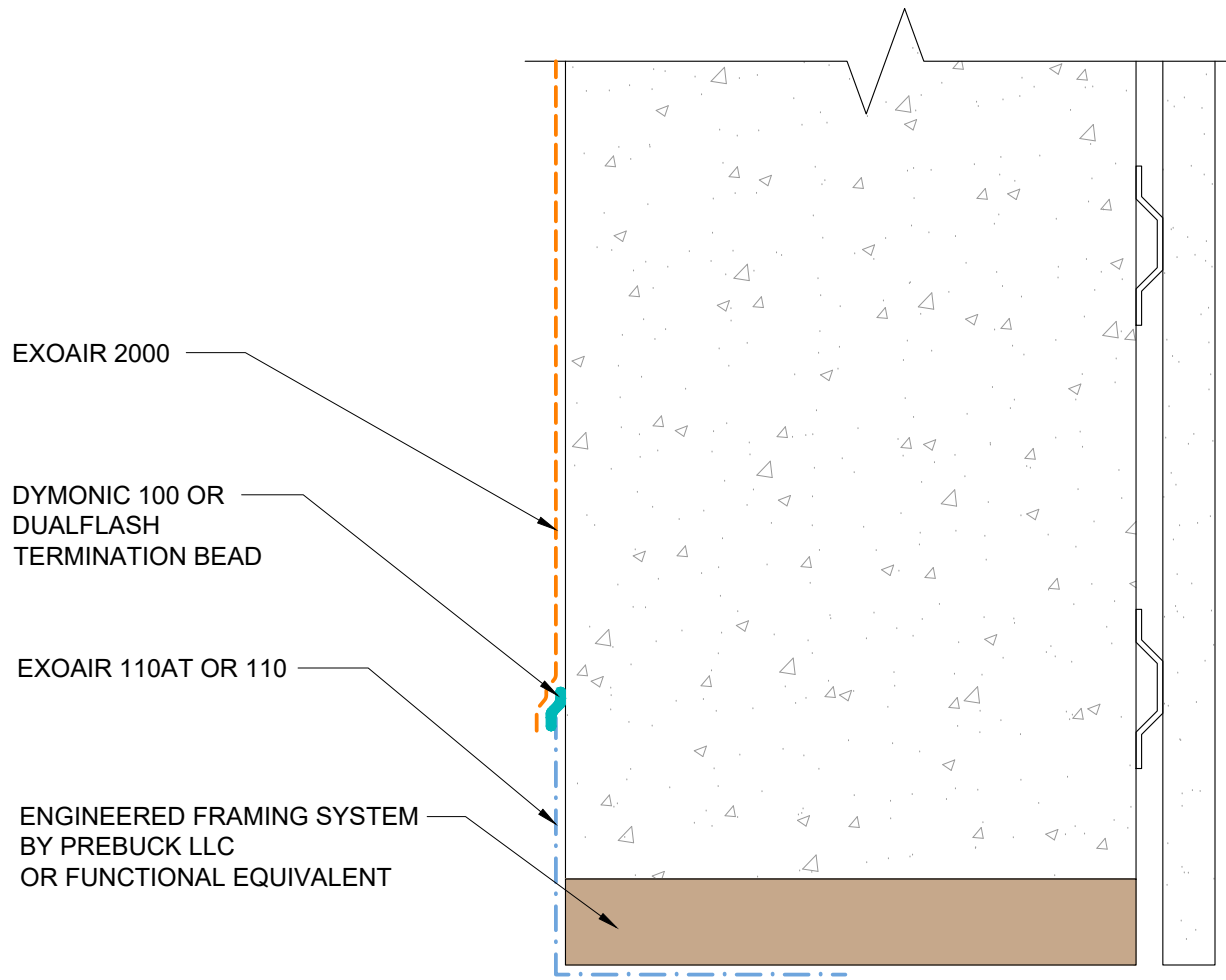
ExoAir 2000

Detail: Inside/Outside Corner - Dymonic 100 Option			File Name:
Drawn by: KAB	Checked by: SG	Scale: NTS	AVB-2000C-C-02
Revision #: 00	Revised by: -	Date: 8/2/2024	



www.tremcocpg.com





EXOAIR 2000

DYMONIC 100 OR
DUALFLASH
TERMINATION BEAD

EXOAIR 110AT OR 110

ENGINEERED FRAMING SYSTEM
BY PREBUCK LLC
OR FUNCTIONAL EQUIVALENT

NOTES: WINDOW AND BUILDING FACADE NOT SHOWN FOR CLARITY

EXOAIR PRIMER MUST BE USED WITH EXOAIR 110

This detail is for general informational purposes only. The project design professional determines, in its sole discretion, whether this detail or a functionally equivalent detail is best suited for the project with respect to any architecture, engineering, and design requirements, including any local building code requirements. If this document is not reviewed and the product is not approved for use by a licensed design professional, the customer agrees that the detail may contain substantive flaws requiring correction, and hereby releases Tremco CPG Inc. from any and all liability related to the design and installation of the product. This detail is subject to change without notice. Contact Tremco to ensure you have the most recent version.

ExoAir 2000



Tremco Technical Support: 866-209-2404

Detail: ExoAir 2000 at Window Head with ExoAir /110110AT			File Name:
Drawn by: KAB	Checked by: SG	Scale: NTS	AVB-2000C-H-01
Revision #: 00	Revised by: -	Date: 8/2/2024	

www.tremcocpg.com

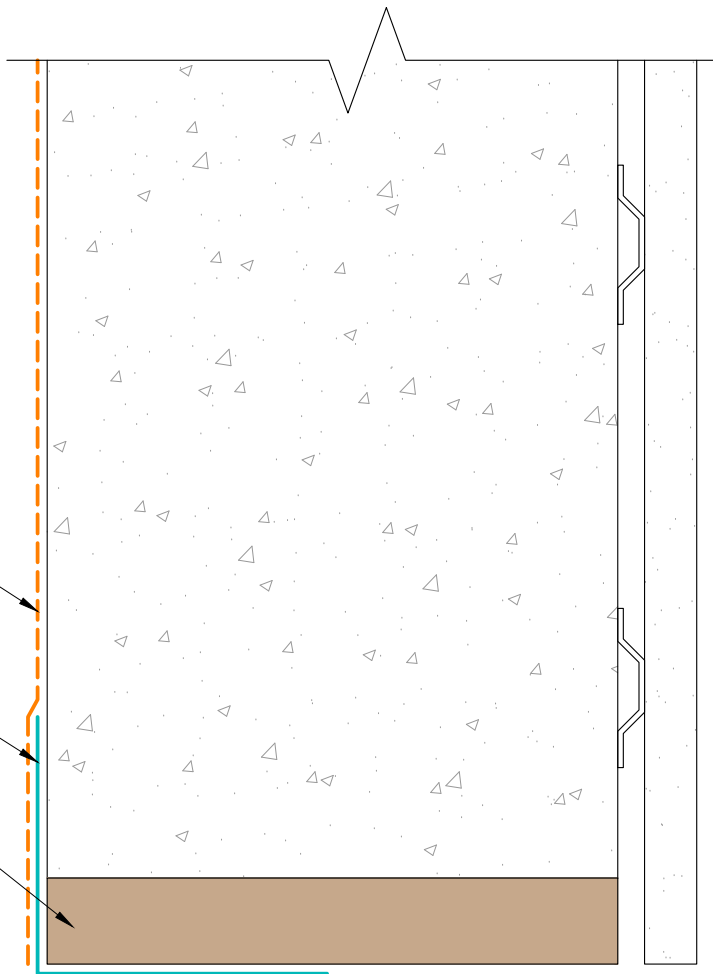


Construction Products Group

EXOAIR 2000

DYMONIC 100 OR
DUALFLASH

ENGINEERED FRAMING SYSTEM
BY PREBUCK LLC
OR FUNCTIONAL EQUIVALENT



NOTES: WINDOW AND BUILDING FACADE NOT SHOWN FOR CLARITY

This detail is for general informational purposes only. The project design professional determines, in its sole discretion, whether this detail or a functionally equivalent detail is best suited for the project with respect to any architecture, engineering, and design requirements, including any local building code requirements. If this document is not reviewed and the product is not approved for use by a licensed design professional, the customer agrees that the detail may contain substantive flaws requiring correction, and hereby releases Tremco CPG Inc. from any and all liability related to the design and installation of the product. This detail is subject to change without notice. Contact Tremco to ensure you have the most recent version.

ExoAir 2000

Detail: ExoAir 2000 at Window Head with Dymonic 100

File Name:

Drawn by: KAB

Checked by: SG

Scale: NTS

AVB-2000C-H-02

Revision #: 00

Revised by: -

Date: 8/2/2024

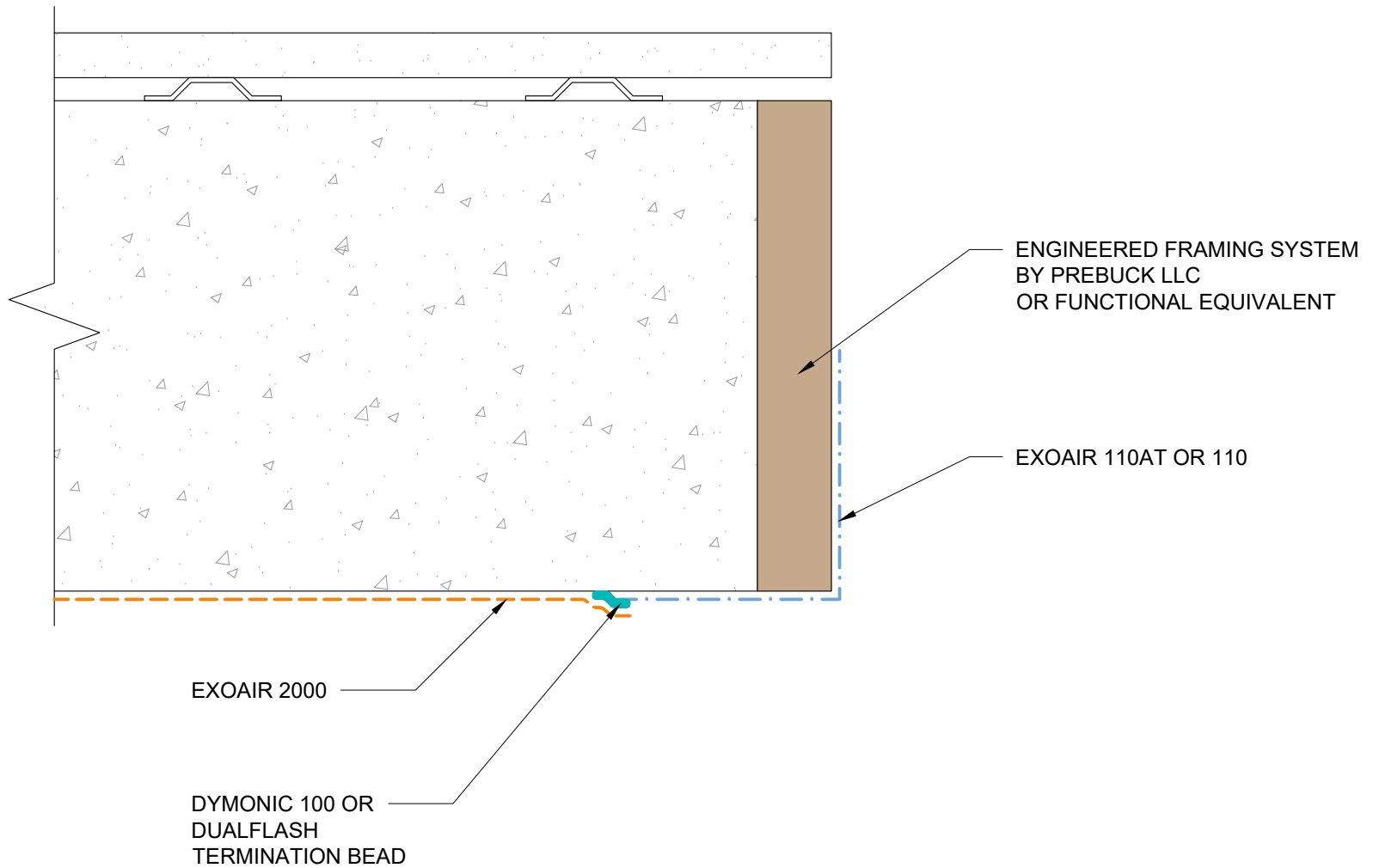


Tremco Technical Support: 866-209-2404

www.tremcocpg.com





Construction Products Group

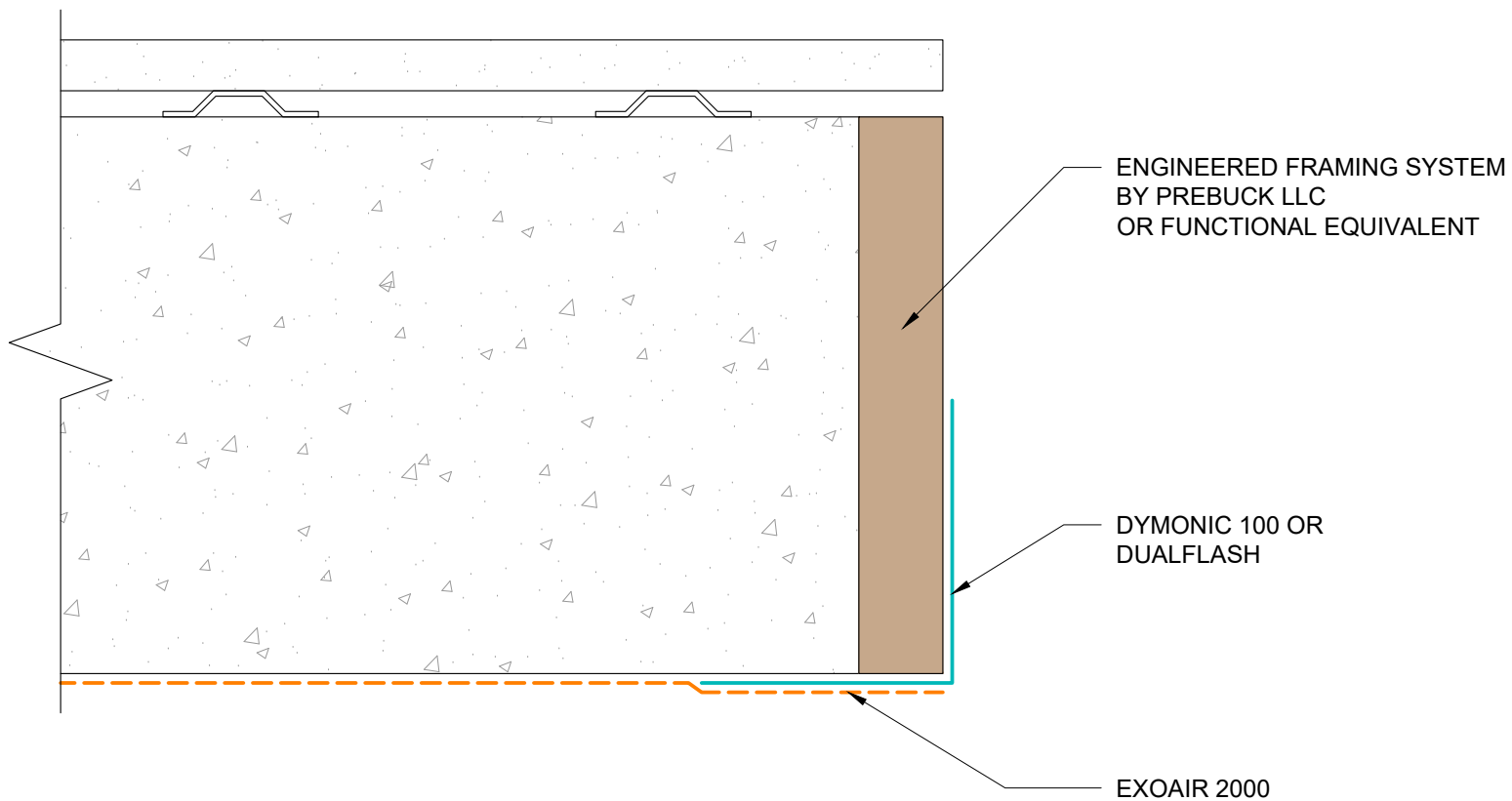


NOTES: WINDOW AND BUILDING FACADE NOT SHOWN FOR CLARITY
 EXOAIR PRIMER MUST BE USED WITH EXOAIR 110

This detail is for general informational purposes only. The project design professional determines, in its sole discretion, whether this detail or a functionally equivalent detail is best suited for the project with respect to any architecture, engineering, and design requirements, including any local building code requirements. If this document is not reviewed and the product is not approved for use by a licensed design professional, the customer agrees that the detail may contain substantive flaws requiring correction, and hereby releases Tremco CPG Inc. from any and all liability related to the design and installation of the product. This detail is subject to change without notice. Contact Tremco to ensure you have the most recent version.

ExoAir 2000



 Tremco Technical Support: 866-209-2404	Detail: ExoAir 2000 at Window Jamb with ExoAir 110/110AT			File Name:	 Construction Products Group
	Drawn by: KAB	Checked by: SG	Scale: NTS	AVB-2000C-J-01	
	Revision #: 00	Revised by: -	Date: 8/2/2024		
<small>www.tremcocpg.com</small>					

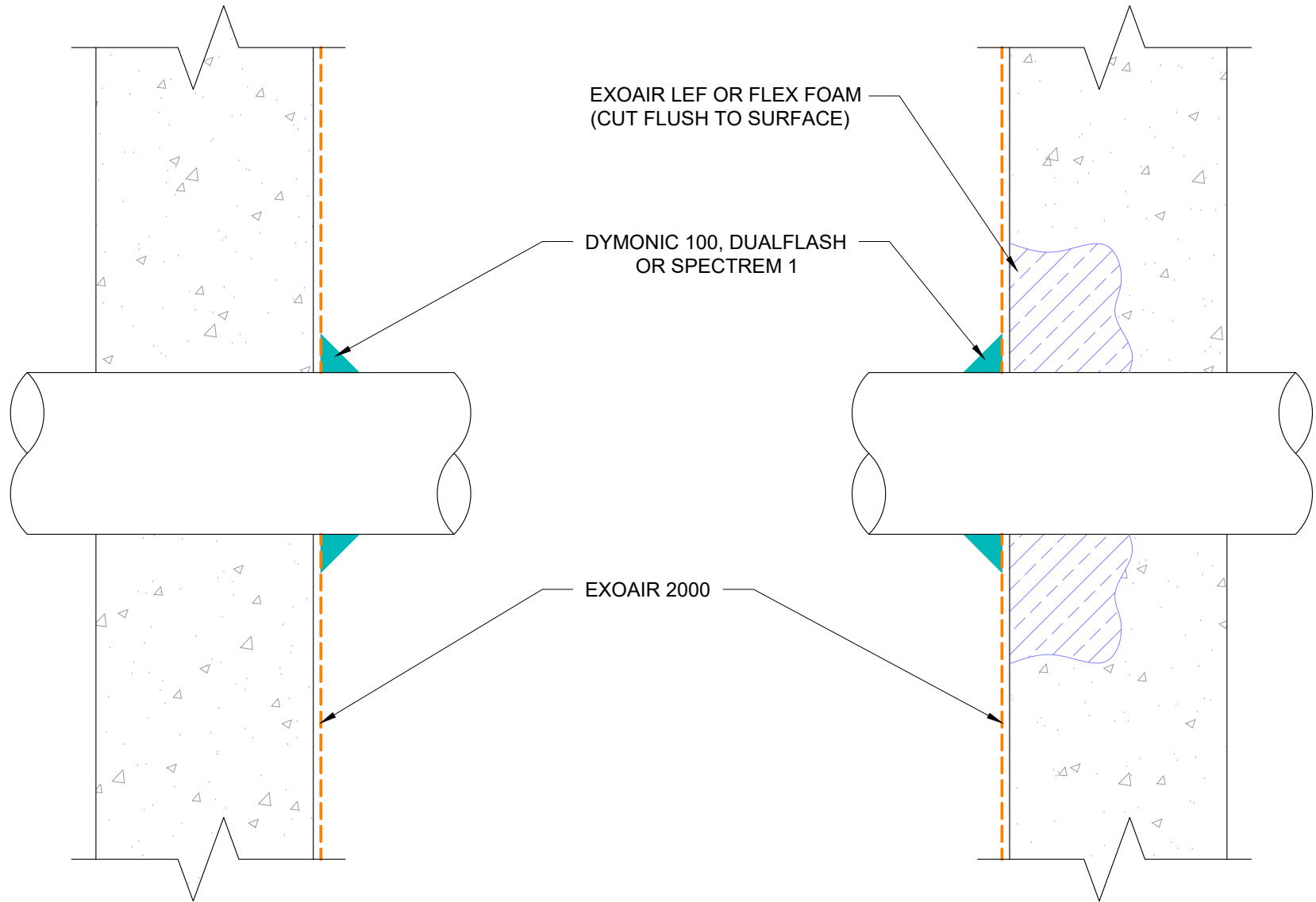


NOTES: WINDOW AND BUILDING FACADE NOT SHOWN FOR CLARITY

This detail is for general informational purposes only. The project design professional determines, in its sole discretion, whether this detail or a functionally equivalent detail is best suited for the project with respect to any architecture, engineering, and design requirements, including any local building code requirements. If this document is not reviewed and the product is not approved for use by a licensed design professional, the customer agrees that the detail may contain substantive flaws requiring correction, and hereby releases Tremco CPG Inc. from any and all liability related to the design and installation of the product. This detail is subject to change without notice. Contact Tremco to ensure you have the most recent version.

ExoAir 2000

 Tremco Technical Support: 866-209-2404	Detail: ExoAir 2000 at Window Jamb with Dymonic 100			File Name:	 Construction Products Group
	Drawn by: KAB	Checked by: SG	Scale: NTS	AVB-2000C-J-02	
	Revision #: 00	Revised by: -	Date: 8/2/2024		
www.tremcocpg.com					



EXOAIR LEF OR FLEX FOAM
(CUT FLUSH TO SURFACE)

DYMONIC 100, DUALFLASH
OR SPECTREM 1

EXOAIR 2000

This detail is for general informational purposes only. The project design professional determines, in its sole discretion, whether this detail or a functionally equivalent detail is best suited for the project with respect to any architecture, engineering, and design requirements, including any local building code requirements. If this document is not reviewed and the product is not approved for use by a licensed design professional, the customer agrees that the detail may contain substantive flaws requiring correction, and hereby releases Tremco CPG Inc. from any and all liability related to the design and installation of the product. This detail is subject to change without notice. Contact Tremco to ensure you have the most recent version.

ExoAir 2000



Tremco Technical Support: 866-209-2404

Detail: Penetration - Option 1

Drawn by: KAB

Checked by: SG

Scale: NTS

Revision #: 00

Revised by: -

Date: 8/2/2024

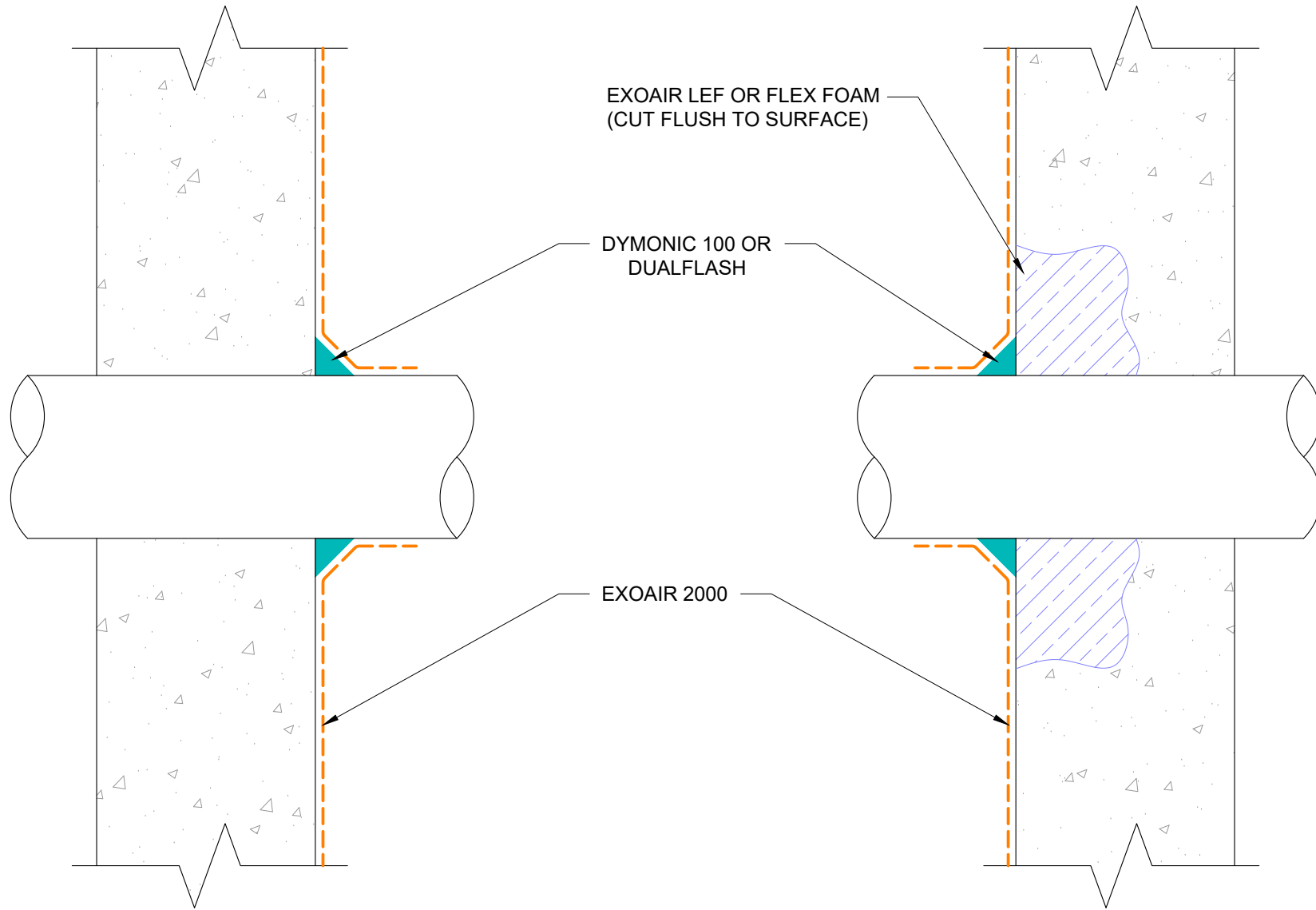
File Name:

AVB-2000C-P-01



Construction Products Group

www.tremcocpg.com



This detail is for general informational purposes only. The project design professional determines, in its sole discretion, whether this detail or a functionally equivalent detail is best suited for the project with respect to any architecture, engineering, and design requirements, including any local building code requirements. If this document is not reviewed and the product is not approved for use by a licensed design professional, the customer agrees that the detail may contain substantive flaws requiring correction, and hereby releases Tremco CPG Inc. from any and all liability related to the design and installation of the product. This detail is subject to change without notice. Contact Tremco to ensure you have the most recent version.

ExoAir 2000

Detail: Penetration - Option 2

Drawn by: KAB

Checked by: SG

Scale: NTS

Revision #: 00

Revised by: -

Date: 8/2/2024

File Name:

AVB-2000C-P-02



Tremco Technical Support: 866-209-2404

www.tremcocpg.com



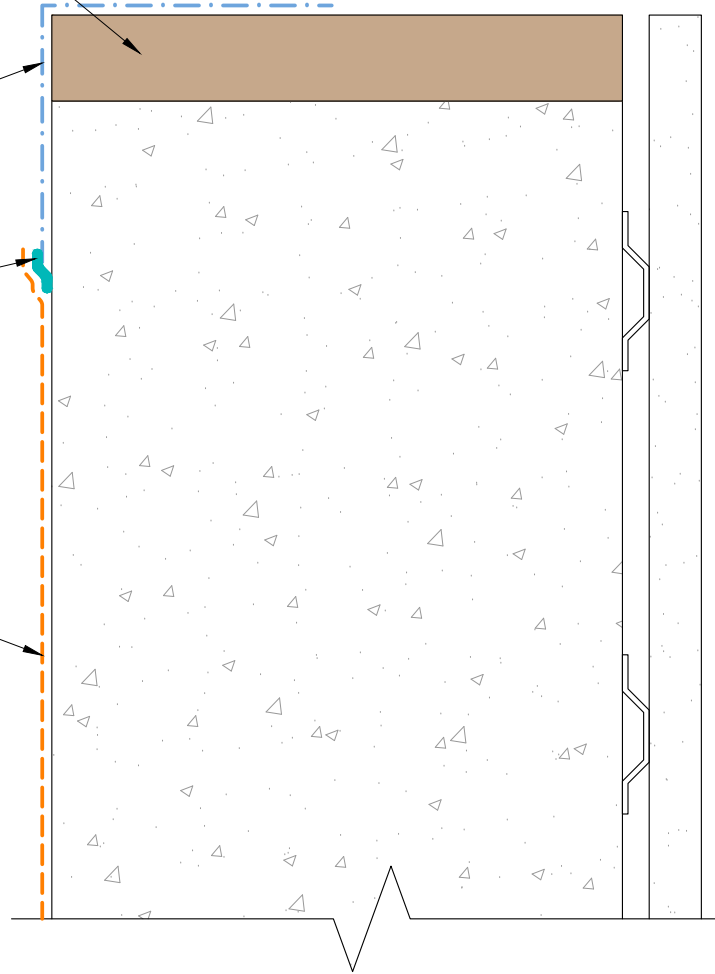
Construction Products Group

ENGINEERED FRAMING SYSTEM
BY PREBUCK LLC
OR FUNCTIONAL EQUIVALENT

EXOAIR 110AT OR 110

DYMONIC 100 OR
DUALFLASH
TERMINATION BEAD

EXOAIR 2000



NOTES: WINDOW AND BUILDING FACADE NOT SHOWN FOR CLARITY

EXOAIR PRIMER MUST BE USED WITH EXOAIR 110

This detail is for general informational purposes only. The project design professional determines, in its sole discretion, whether this detail or a functionally equivalent detail is best suited for the project with respect to any architecture, engineering, and design requirements, including any local building code requirements. If this document is not reviewed and the product is not approved for use by a licensed design professional, the customer agrees that the detail may contain substantive flaws requiring correction, and hereby releases Tremco CPG Inc. from any and all liability related to the design and installation of the product. This detail is subject to change without notice. Contact Tremco to ensure you have the most recent version.

ExoAir 2000

Detail: ExoAir 2000 at Window Sill with ExoAir 110/110AT

File Name:

Drawn by: KAB

Checked by: SG

Scale: NTS

AVB-2000C-S-01

Revision #: 00

Revised by: -

Date: 8/2/2024



Tremco Technical Support: 866-209-2404

www.tremcocpg.com

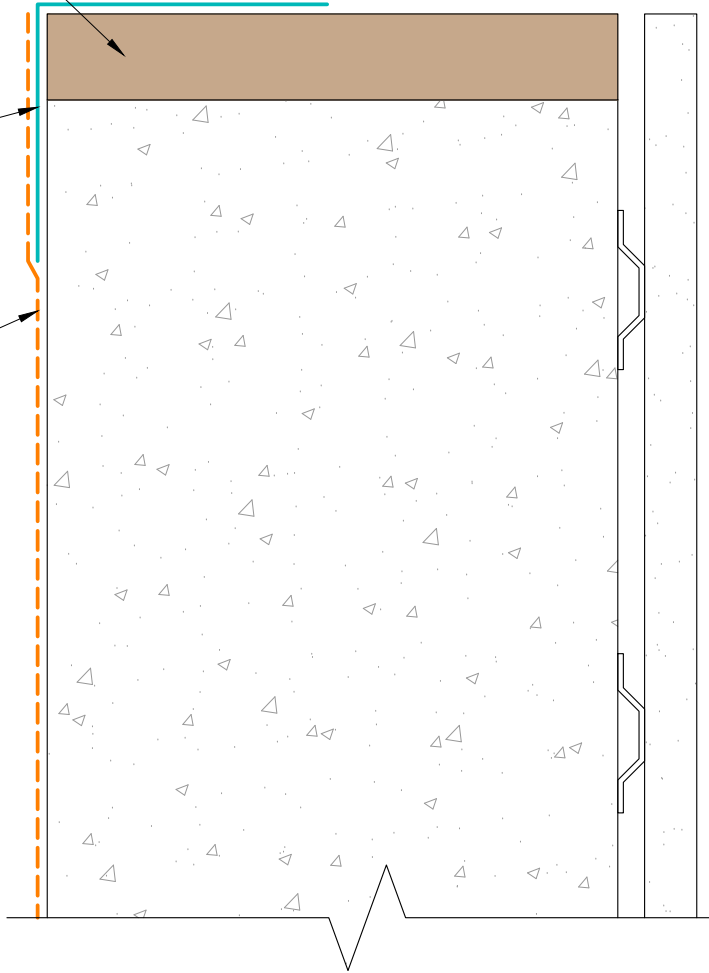


Construction Products Group

ENGINEERED FRAMING SYSTEM
BY PREBUCK LLC
OR FUNCTIONAL EQUIVALENT

DYMONIC 100 OR
DUALFLASH

EXOAIR 2000



NOTES: WINDOW AND BUILDING FACADE NOT SHOWN FOR CLARITY

This detail is for general informational purposes only. The project design professional determines, in its sole discretion, whether this detail or a functionally equivalent detail is best suited for the project with respect to any architecture, engineering, and design requirements, including any local building code requirements. If this document is not reviewed and the product is not approved for use by a licensed design professional, the customer agrees that the detail may contain substantive flaws requiring correction, and hereby releases Tremco CPG Inc. from any and all liability related to the design and installation of the product. This detail is subject to change without notice. Contact Tremco to ensure you have the most recent version.

ExoAir 2000

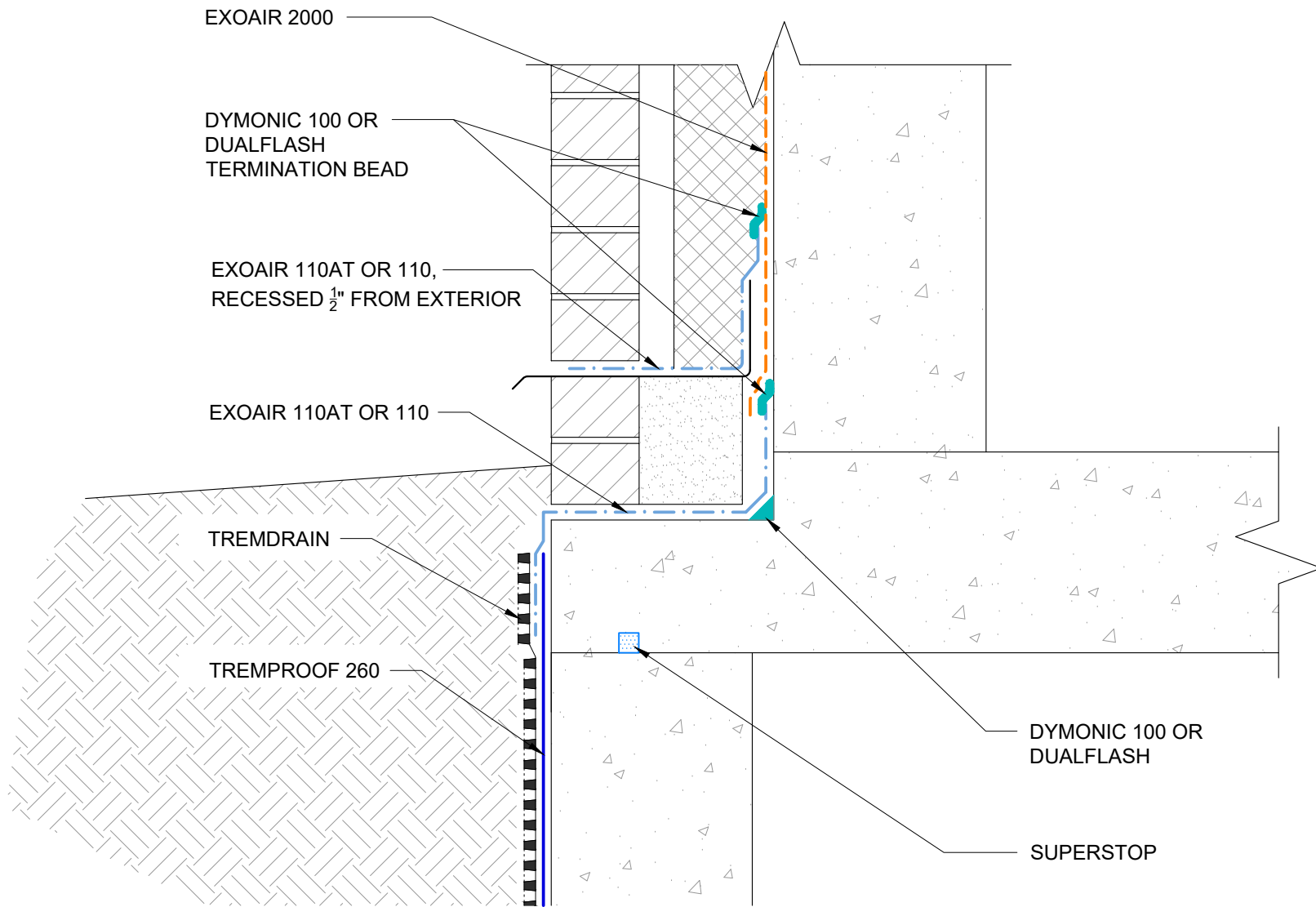
Detail: ExoAir 2000 at Window Sill with Dymonic 100			File Name: AVB-2000C-S-02
Drawn by: KAB	Checked by: SG	Scale: NTS	
Revision #: 00	Revised by: -	Date: 8/2/2024	



Tremco Technical Support: 866-209-2404

www.tremcocpg.com





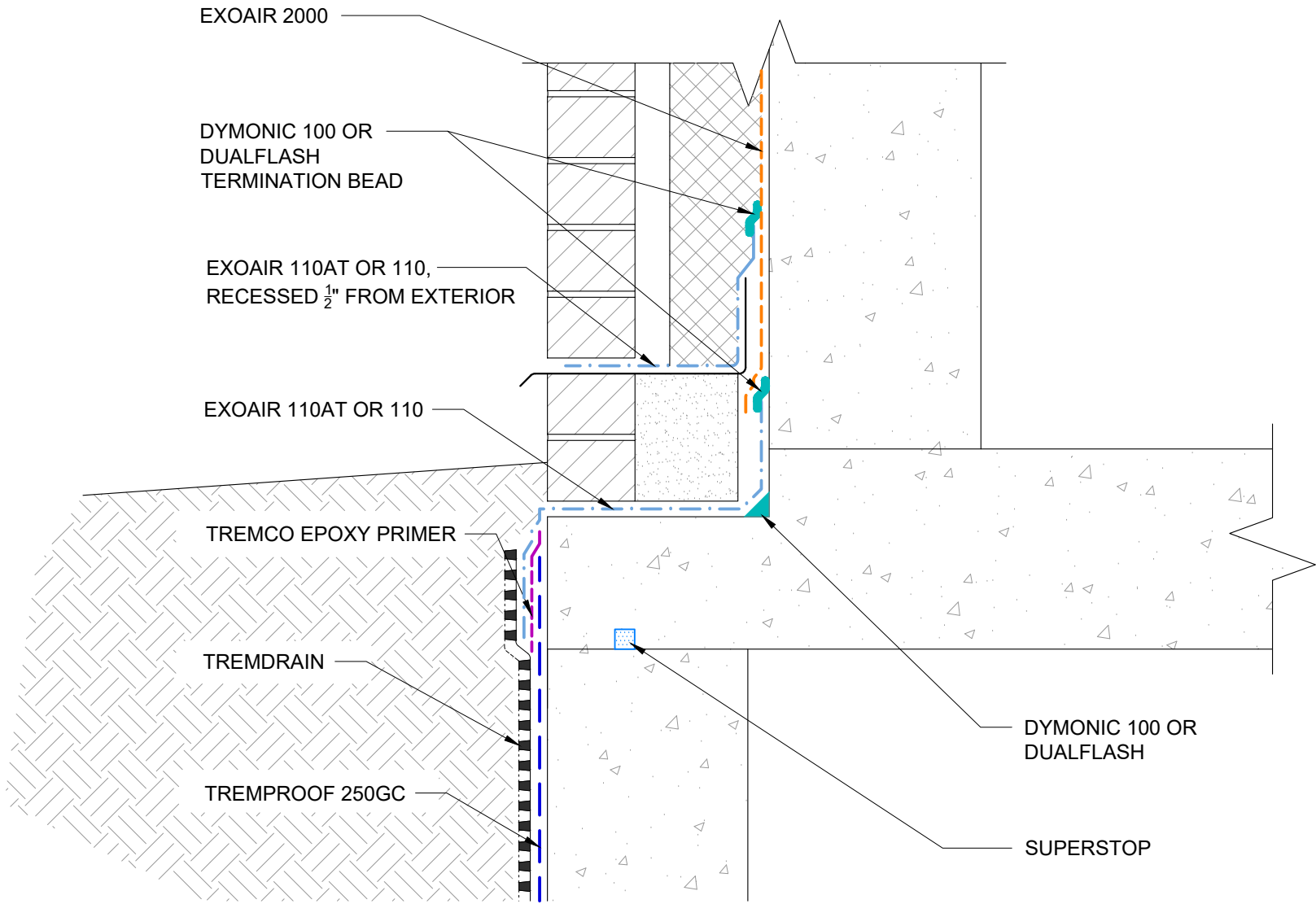


NOTES: EXOAIR PRIMER MUST BE USED WITH EXOAIR 110.

This detail is for general informational purposes only. The project design professional determines, in its sole discretion, whether this detail or a functionally equivalent detail is best suited for the project with respect to any architecture, engineering, and design requirements, including any local building code requirements. If this document is not reviewed and the product is not approved for use by a licensed design professional, the customer agrees that the detail may contain substantive flaws requiring correction, and hereby releases Tremco CPG Inc. from any and all liability related to the design and installation of the product. This detail is subject to change without notice. Contact Tremco to ensure you have the most recent version.

ExoAir 2000



 Tremco Technical Support: 866-209-2404	Detail: ExoAir 2000 Transition to TREMPROOF 260			File Name:	 Construction Products Group
	Drawn by: KAB	Checked by: SG	Scale: NTS	AVB-2000C-T-01	
	Revision #: 00	Revised by: -	Date: 8/2/2024		
www.tremcocpg.com					

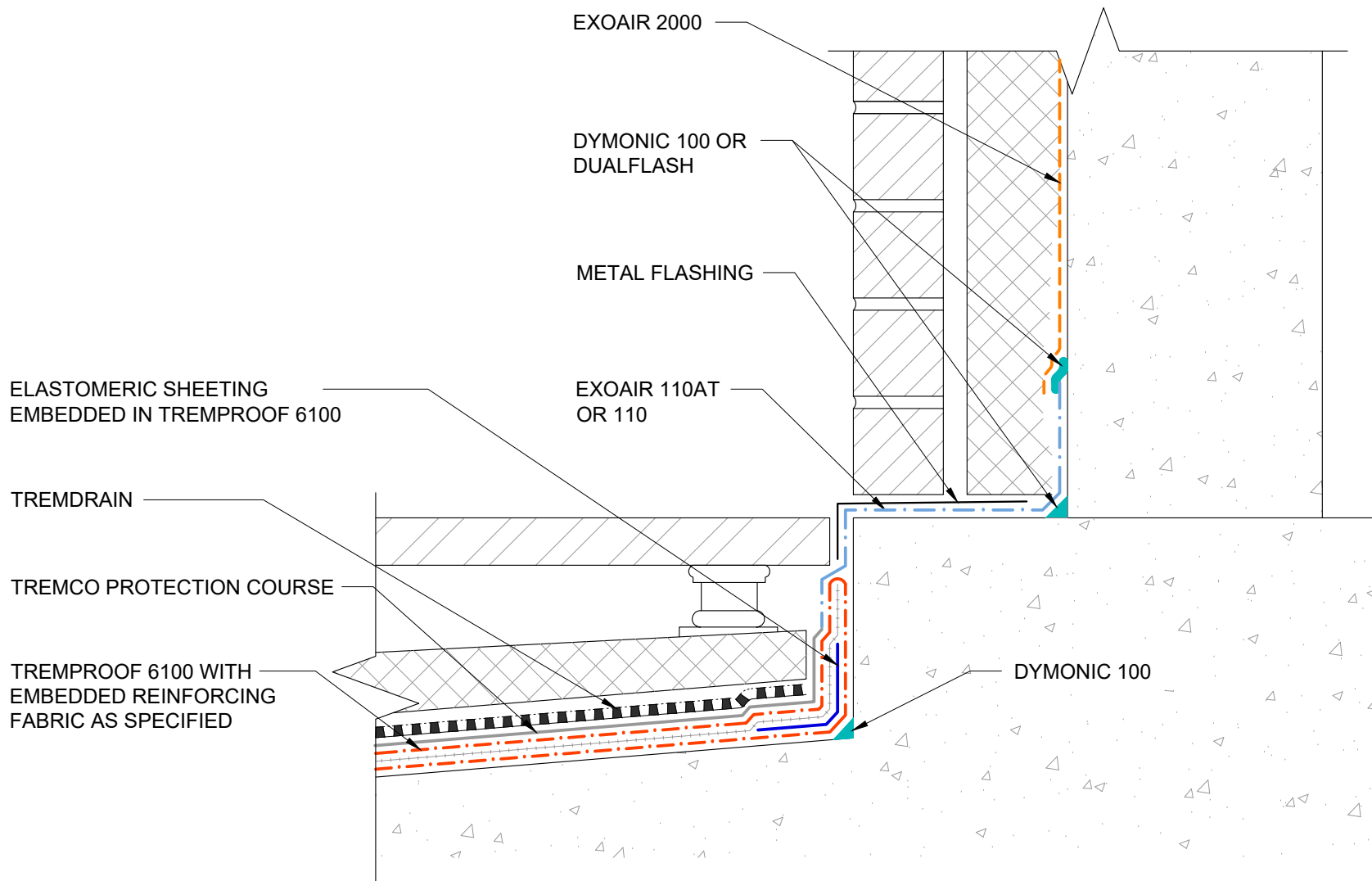


NOTES: EXOAIR PRIMER MUST BE USED WITH EXOAIR 110.

This detail is for general informational purposes only. The project design professional determines, in its sole discretion, whether this detail or a functionally equivalent detail is best suited for the project with respect to any architecture, engineering, and design requirements, including any local building code requirements. If this document is not reviewed and the product is not approved for use by a licensed design professional, the customer agrees that the detail may contain substantive flaws requiring correction, and hereby releases Tremco CPG Inc. from any and all liability related to the design and installation of the product. This detail is subject to change without notice. Contact Tremco to ensure you have the most recent version.

ExoAir 2000

 Tremco Technical Support: 866-209-2404	Detail: ExoAir 2000 Transition to TREMProof 250GC			File Name:	 Construction Products Group
	Drawn by: KAB	Checked by: SG	Scale: NTS	AVB-2000C-T-02	
	Revision #: 00	Revised by: -	Date: 8/2/2024		
www.tremcocpg.com					



NOTES: EXOAIR PRIMER MUST BE USED WITH EXOAIR 110.

This detail is for general informational purposes only. The project design professional determines, in its sole discretion, whether this detail or a functionally equivalent detail is best suited for the project with respect to any architecture, engineering, and design requirements, including any local building code requirements. If this document is not reviewed and the product is not approved for use by a licensed design professional, the customer agrees that the detail may contain substantive flaws requiring correction, and hereby releases Tremco CPG Inc. from any and all liability related to the design and installation of the product. This detail is subject to change without notice. Contact Tremco to ensure you have the most recent version.

ExoAir 2000

Detail: ExoAir 2000 Transition to TREMProof 6100 at Brick Ledge			File Name:
Drawn by: KAB	Checked by: SG	Scale: NTS	AVB-2000C-T-03
Revision #: 00	Revised by: -	Date: 8/2/2024	



Tremco Technical Support: 866-209-2404

www.tremcocpg.com



Construction Products Group