

*This detail is for general informational purposes only. The project design professional determines, in its sole discretion, whether this detail or a functionally equivalent detail is best suited for the project with respect to any architecture, engineering, and design requirements, including any local building code requirements. If this document is not reviewed and the product is not approved for use by a licensed design professional, the customer agrees that the detail may contain substantive flaws requiring correction, and hereby releases Tremco CPG Inc. from any and all liability related to the design and installation of the product. This detail is subject to change without notice. Contact Tremco to ensure you have the most recent version.*

### ExoAir DualFlash



Tremco Technical Support: 866-209-2404

Detail: Brick Lintel

Drawn by: HDE

Revision #: 01

Checked by: CB

Revised by: KAB

Scale: NTS

Date: 11/19/2024

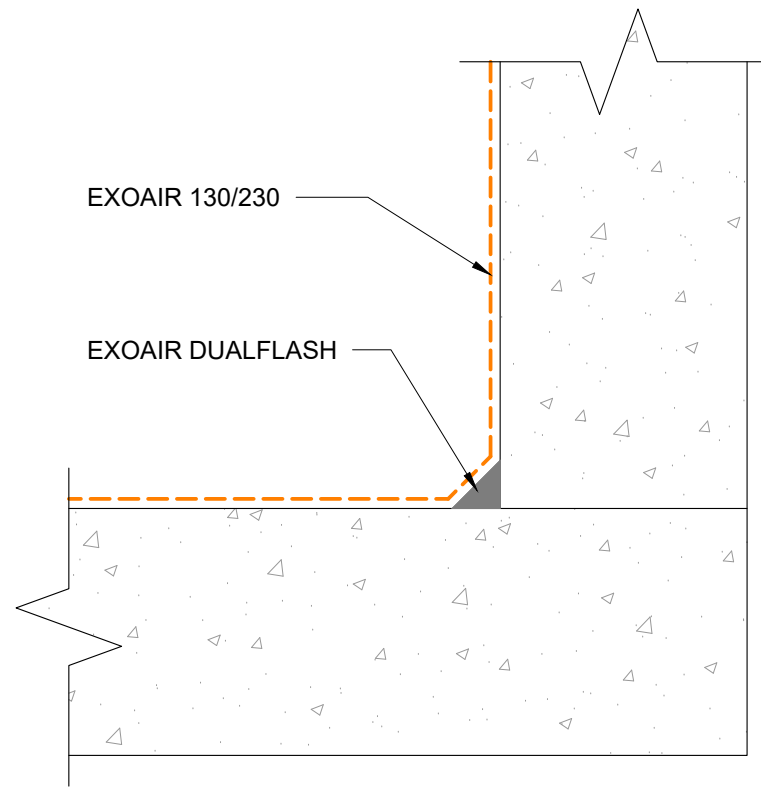
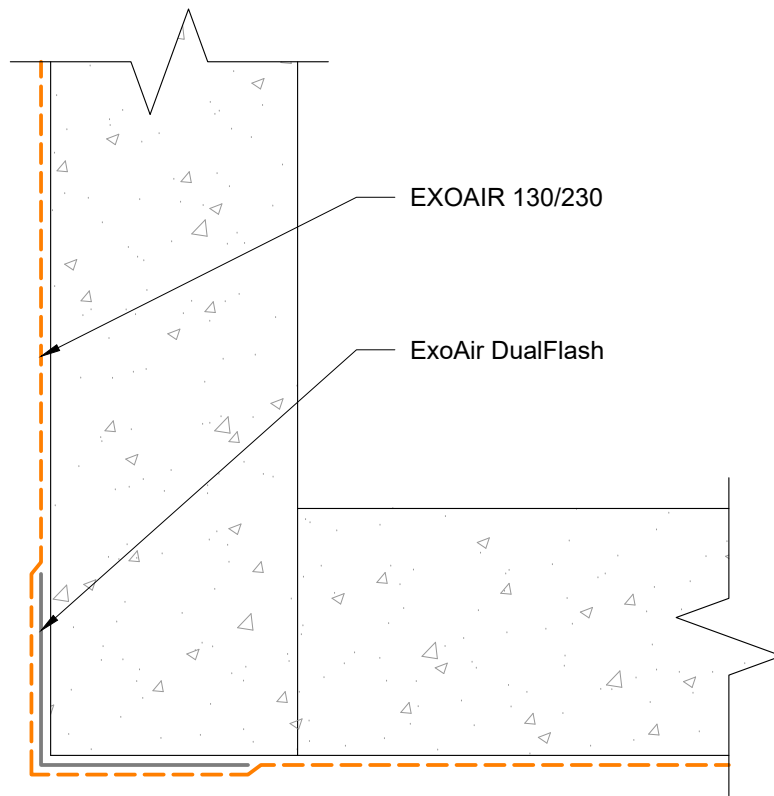
[www.tremcocpg.com](http://www.tremcocpg.com)

File Name:

DF-BL-01





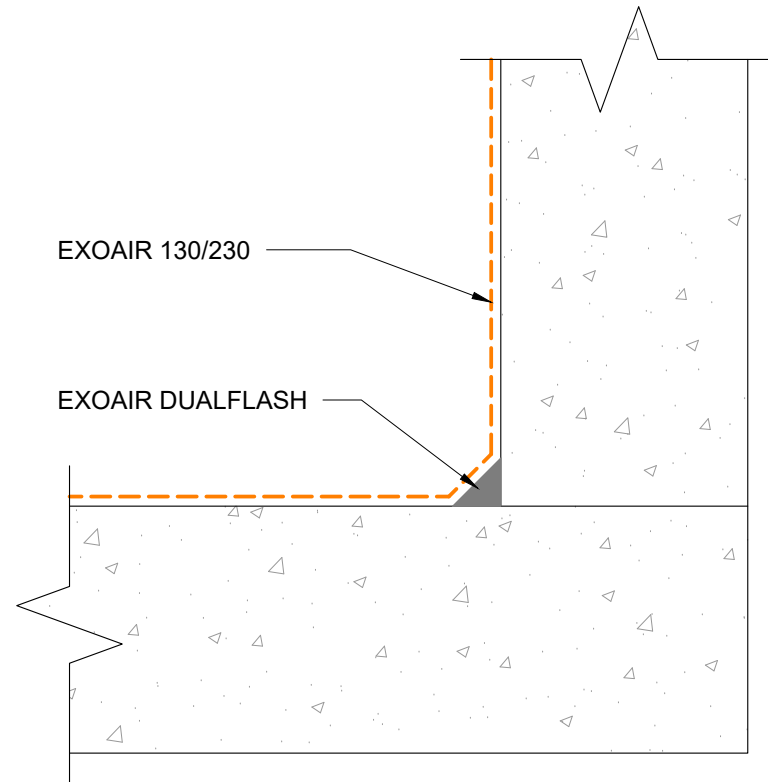
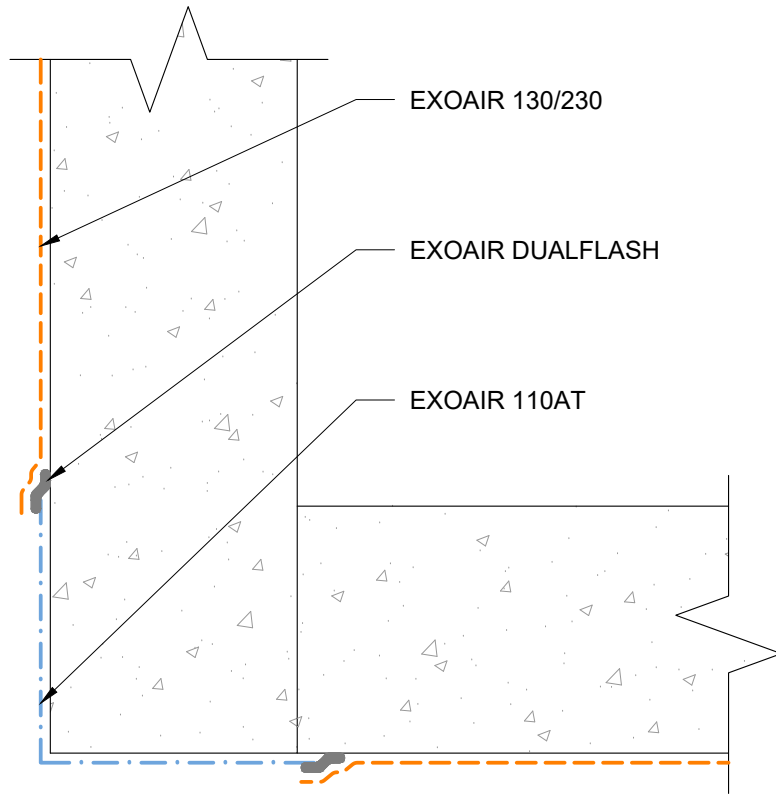
Construction Products Group



*This detail is for general informational purposes only. The project design professional determines, in its sole discretion, whether this detail or a functionally equivalent detail is best suited for the project with respect to any architecture, engineering, and design requirements, including any local building code requirements. If this document is not reviewed and the product is not approved for use by a licensed design professional, the customer agrees that the detail may contain substantive flaws requiring correction, and hereby releases Tremco CPG Inc. from any and all liability related to the design and installation of the product. This detail is subject to change without notice. Contact Tremco to ensure you have the most recent version.*


### ExoAir DualFlash

 Tremco Technical Support: 866-209-2404	Detail: Inside/Outside Corner			File Name:  DF-C-01	 Construction Products Group
	Drawn by: HDE	Checked by: CB	Scale: NTS		
	Revision #: 01	Revised by: KAB	Date: 11/19/2024		
<small>www.tremcocpg.com</small>					



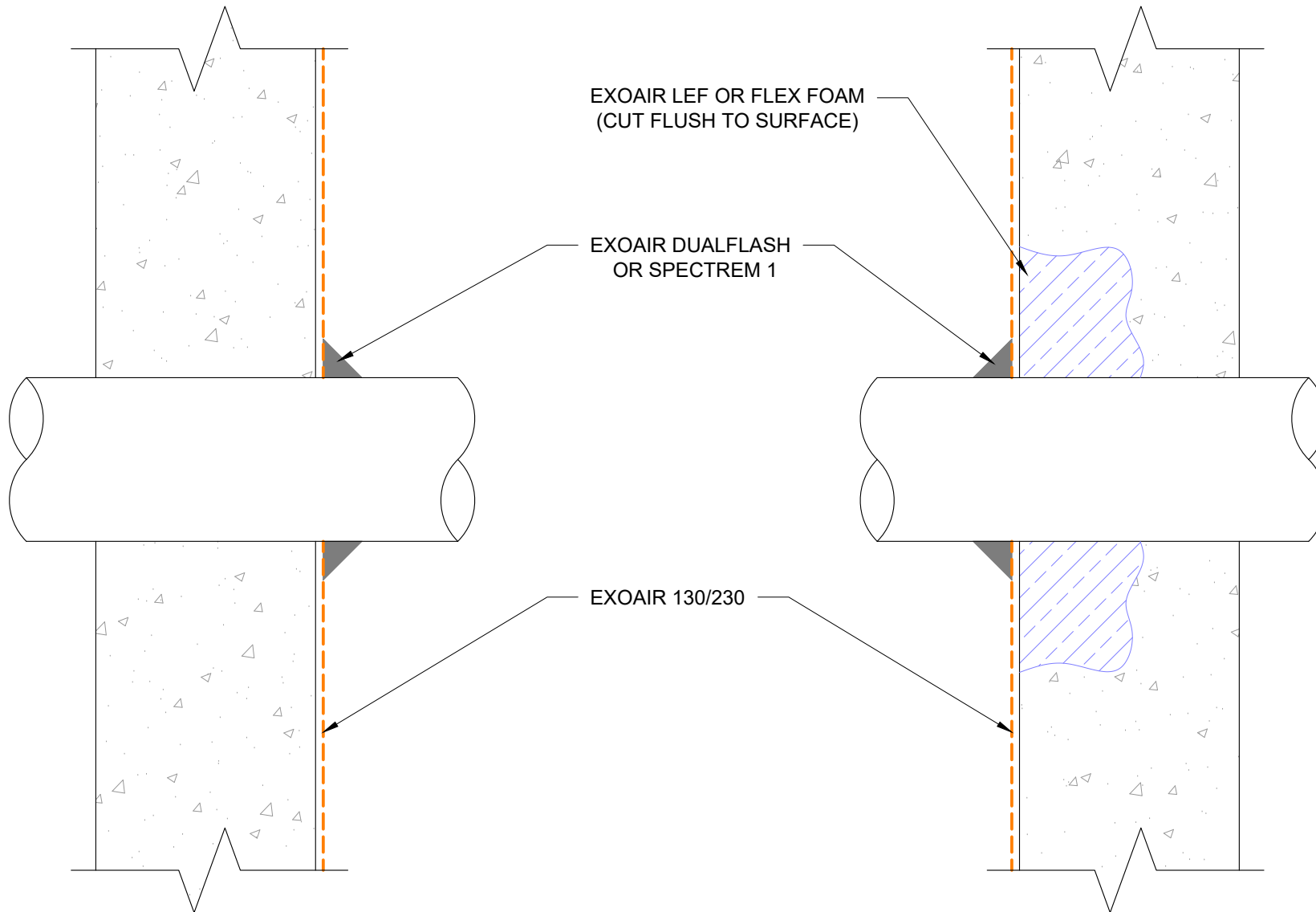
*This detail is for general informational purposes only. The project design professional determines, in its sole discretion, whether this detail or a functionally equivalent detail is best suited for the project with respect to any architecture, engineering, and design requirements, including any local building code requirements. If this document is not reviewed and the product is not approved for use by a licensed design professional, the customer agrees that the detail may contain substantive flaws requiring correction, and hereby releases Tremco CPG Inc. from any and all liability related to the design and installation of the product. This detail is subject to change without notice. Contact Tremco to ensure you have the most recent version.*

### ExoAir DualFlash

Detail: Inside/Outside Corner - ExoAir 110/110AT Option			File Name:
Drawn by: HDE	Checked by: CB	Scale: NTS	DF-C-02
Revision #: 01	Revised by: KAB	Date: 11/19/2024	
<a href="http://www.tremcocpg.com">www.tremcocpg.com</a>			



Tremco Technical Support: 866-209-2404



*This detail is for general informational purposes only. The project design professional determines, in its sole discretion, whether this detail or a functionally equivalent detail is best suited for the project with respect to any architecture, engineering, and design requirements, including any local building code requirements. If this document is not reviewed and the product is not approved for use by a licensed design professional, the customer agrees that the detail may contain substantive flaws requiring correction, and hereby releases Tremco CPG Inc. from any and all liability related to the design and installation of the product. This detail is subject to change without notice. Contact Tremco to ensure you have the most recent version.*

### ExoAir DualFlash

Detail: Penetration - Option 1

Drawn by: HDE

Checked by: CB

Scale: NTS

Revision #: 01

Revised by: KAB

Date: 11/19/2024

File Name:

DF-P-01

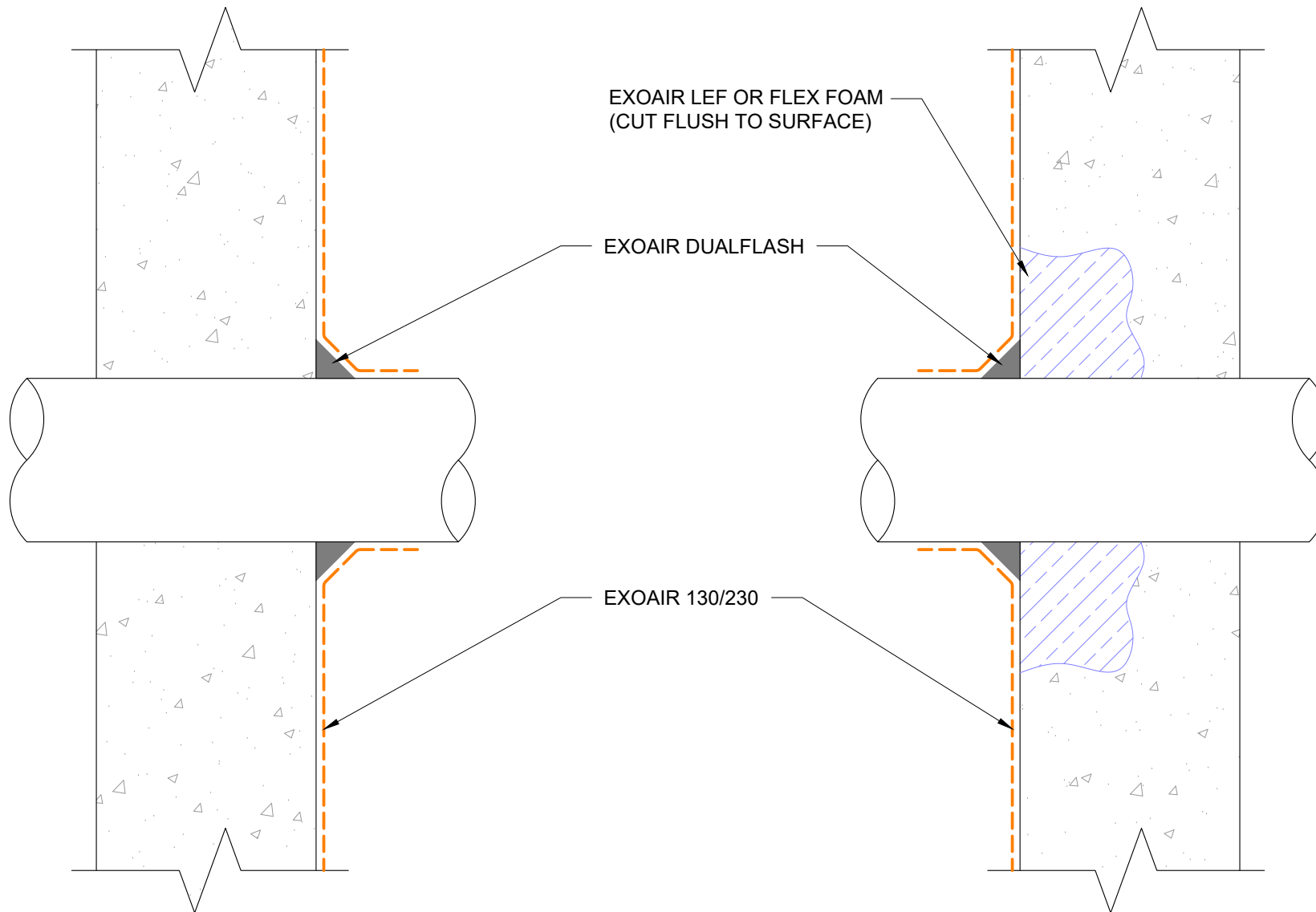


Tremco Technical Support: 866-209-2404



Construction Products Group

[www.tremcocpg.com](http://www.tremcocpg.com)



*This detail is for general informational purposes only. The project design professional determines, in its sole discretion, whether this detail or a functionally equivalent detail is best suited for the project with respect to any architecture, engineering, and design requirements, including any local building code requirements. If this document is not reviewed and the product is not approved for use by a licensed design professional, the customer agrees that the detail may contain substantive flaws requiring correction, and hereby releases Tremco CPG Inc. from any and all liability related to the design and installation of the product. This detail is subject to change without notice. Contact Tremco to ensure you have the most recent version.*

### ExoAir DualFlash

Detail: Penetration - Option 2

Drawn by: HDE

Checked by: CB

Scale: NTS

Revision #: 01

Revised by: KAB

Date: 11/19/2024

File Name:

DF-P-02

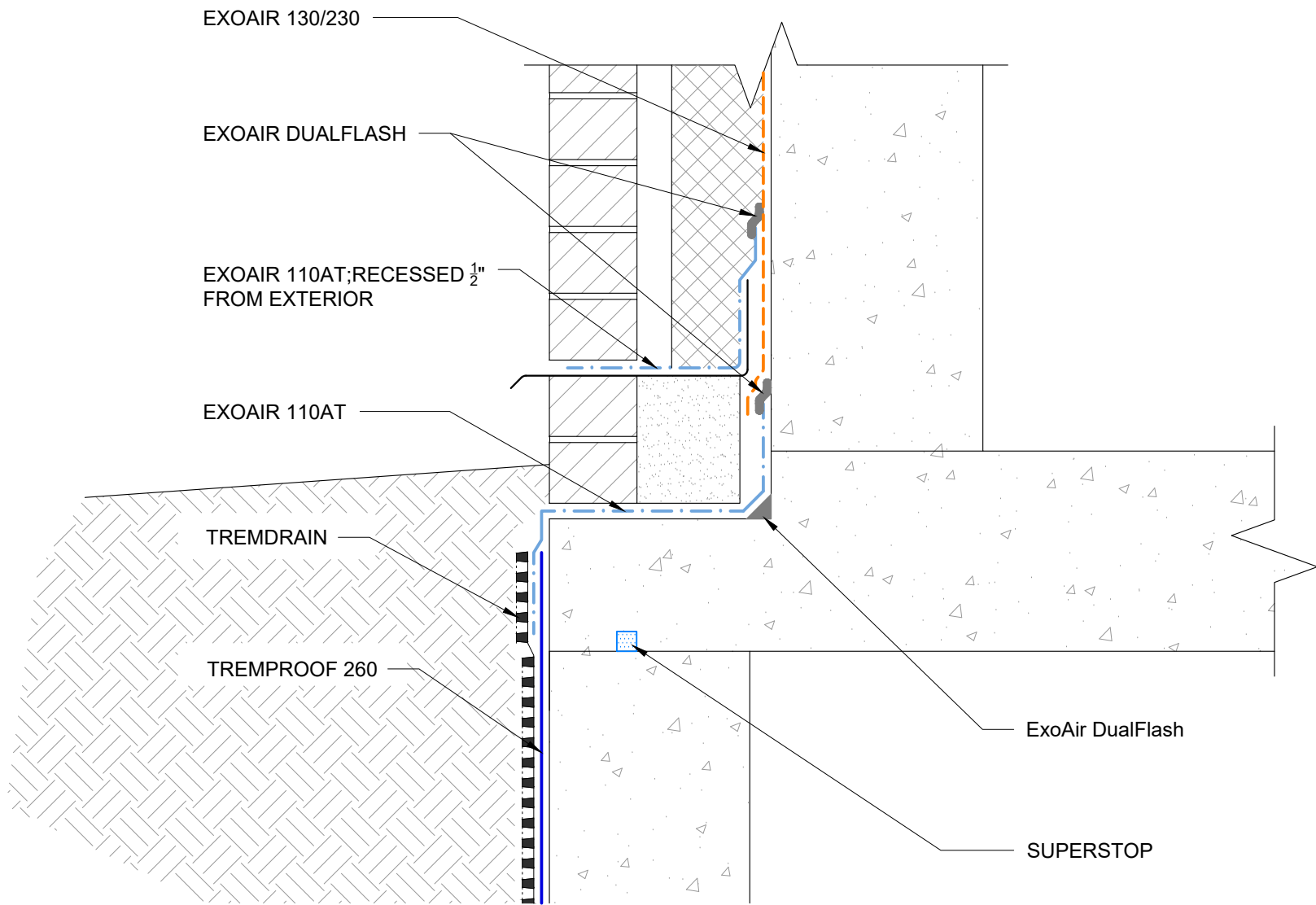


Tremco Technical Support: 866-209-2404



Construction Products Group

[www.tremcocpg.com](http://www.tremcocpg.com)



*This detail is for general informational purposes only. The project design professional determines, in its sole discretion, whether this detail or a functionally equivalent detail is best suited for the project with respect to any architecture, engineering, and design requirements, including any local building code requirements. If this document is not reviewed and the product is not approved for use by a licensed design professional, the customer agrees that the detail may contain substantive flaws requiring correction, and hereby releases Tremco CPG Inc. from any and all liability related to the design and installation of the product. This detail is subject to change without notice. Contact Tremco to ensure you have the most recent version.*

**ExoAir DualFlash**

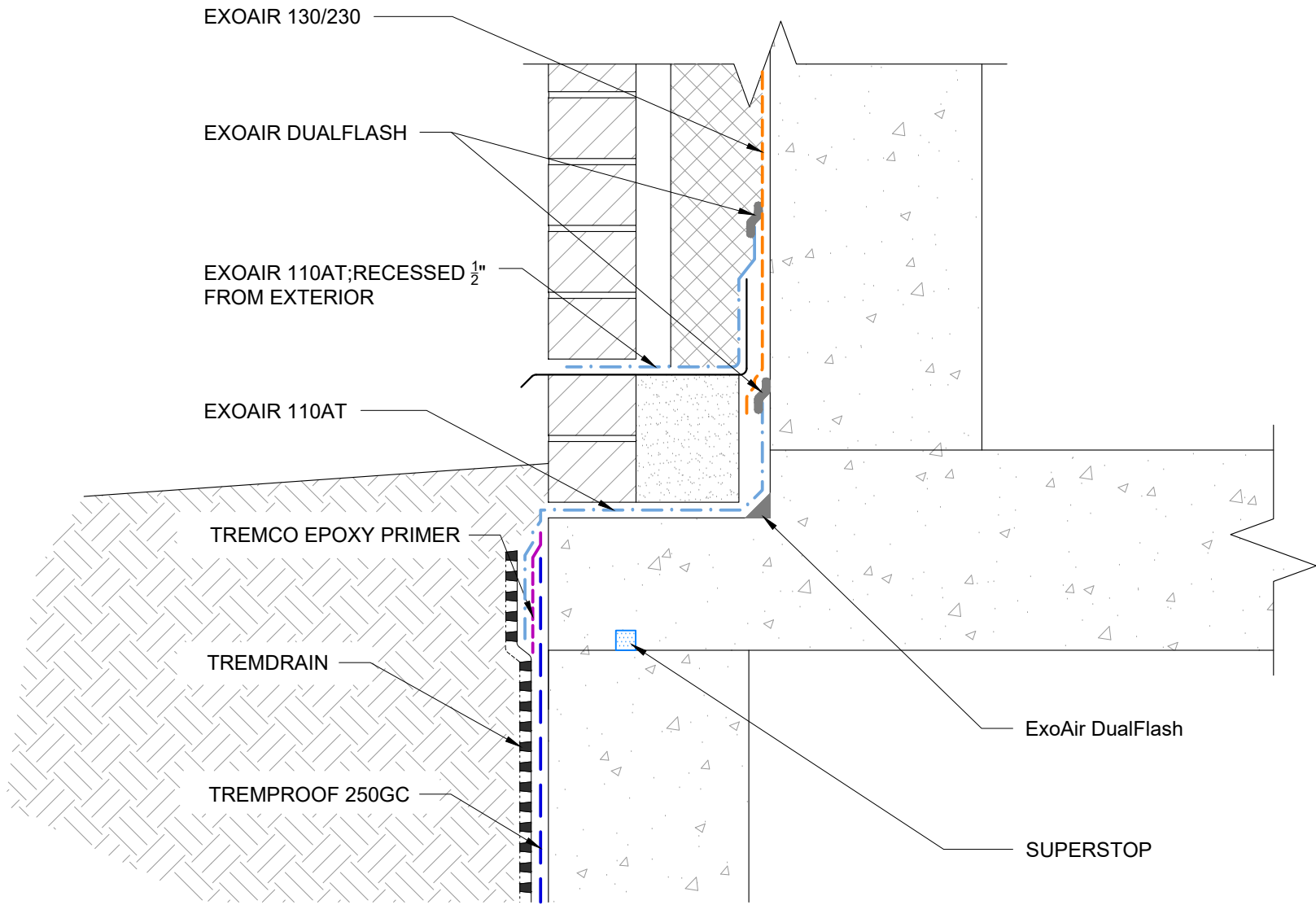
Detail: Impermeable Fluid Transition to TREMproof 260			File Name:  <b>DF-T-01</b>
Drawn by: HDE	Checked by: CB	Scale: NTS	
Revision #: 01	Revised by: KAB	Date: 11/19/2024	



Tremco Technical Support: 866-209-2404

[www.tremcocpg.com](http://www.tremcocpg.com)





*This detail is for general informational purposes only. The project design professional determines, in its sole discretion, whether this detail or a functionally equivalent detail is best suited for the project with respect to any architecture, engineering, and design requirements, including any local building code requirements. If this document is not reviewed and the product is not approved for use by a licensed design professional, the customer agrees that the detail may contain substantive flaws requiring correction, and hereby releases Tremco CPG Inc. from any and all liability related to the design and installation of the product. This detail is subject to change without notice. Contact Tremco to ensure you have the most recent version.*

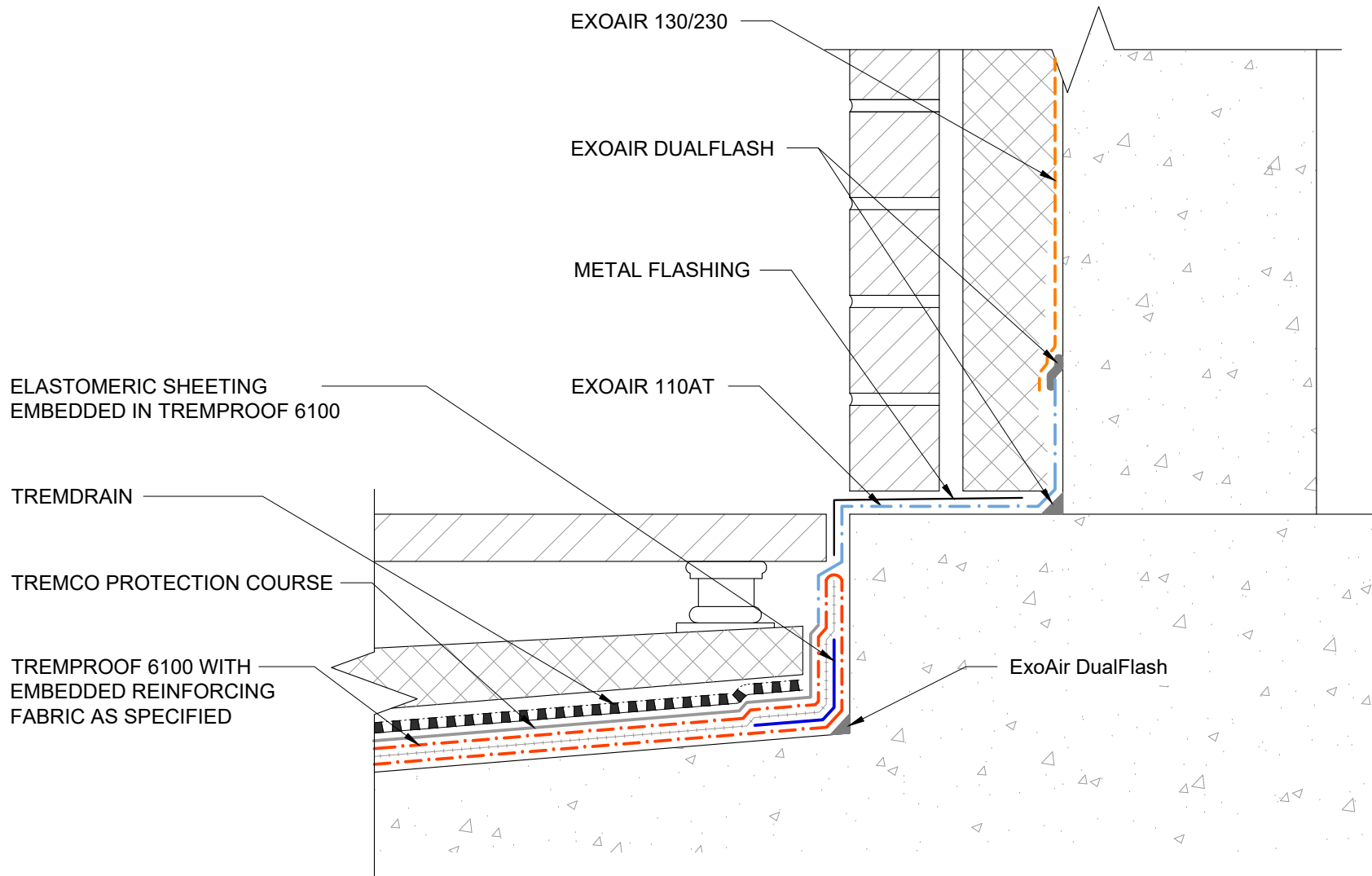
**ExoAir DualFlash**



Detail: Impermeable Fluid Transition to TREMProof 250GC			File Name:  <b>DF-T-02</b>
Drawn by: HDE	Checked by: CB	Scale: NTS	
Revision #: 01	Revised by: KAB	Date: 11/19/2024	

[www.tremcocpg.com](http://www.tremcocpg.com)





*This detail is for general informational purposes only. The project design professional determines, in its sole discretion, whether this detail or a functionally equivalent detail is best suited for the project with respect to any architecture, engineering, and design requirements, including any local building code requirements. If this document is not reviewed and the product is not approved for use by a licensed design professional, the customer agrees that the detail may contain substantive flaws requiring correction, and hereby releases Tremco CPG Inc. from any and all liability related to the design and installation of the product. This detail is subject to change without notice. Contact Tremco to ensure you have the most recent version.*

### ExoAir DualFlash

Detail: Impermeable Fluid Transition to TREMProof 6100			File Name:
Drawn by: HDE	Checked by: CB	Scale: NTS	DF-T-03
Revision #: 01	Revised by: KAB	Date: 11/19/2024	
<a href="http://www.tremcocpg.com">www.tremcocpg.com</a>			

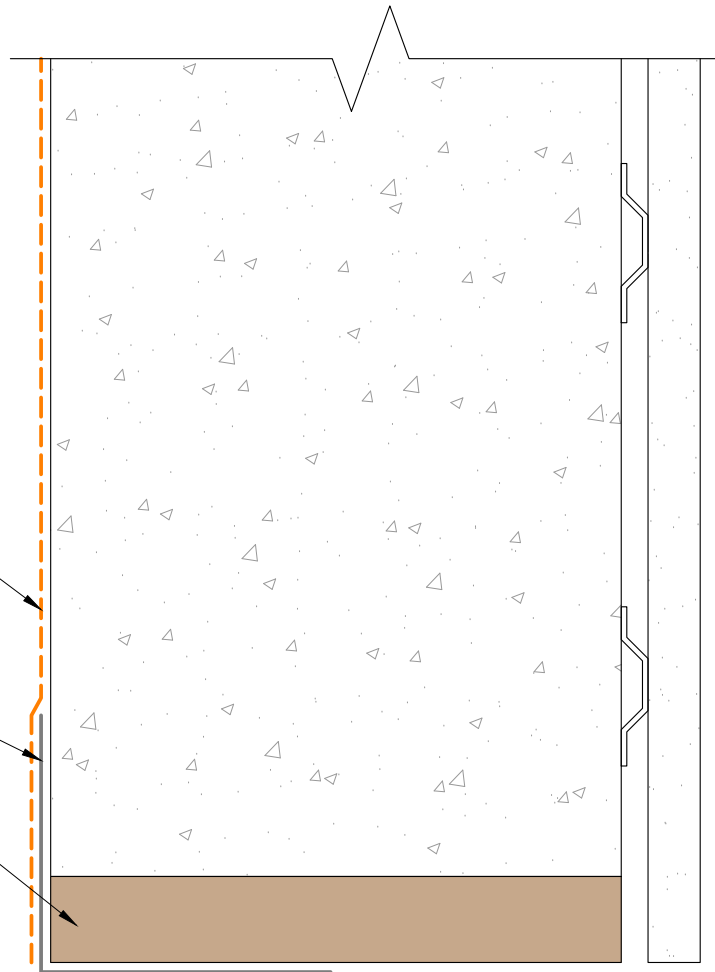




EXOAIR 130/230

EXOAIR DUALFLASH

ENGINEERED FRAMING SYSTEM  
BY PREBUCK LLC  
OR FUNCTIONAL EQUIVALENT



NOTES: WINDOW AND BUILDING FACADE NOT SHOWN FOR CLARITY

*This detail is for general informational purposes only. The project design professional determines, in its sole discretion, whether this detail or a functionally equivalent detail is best suited for the project with respect to any architecture, engineering, and design requirements, including any local building code requirements. If this document is not reviewed and the product is not approved for use by a licensed design professional, the customer agrees that the detail may contain substantive flaws requiring correction, and hereby releases Tremco CPG Inc. from any and all liability related to the design and installation of the product. This detail is subject to change without notice. Contact Tremco to ensure you have the most recent version.*

### ExoAir DualFlash



Tremco Technical Support: 866-209-2404

Detail: Head

Drawn by: HDE

Revision #: 01

Checked by: CB

Revised by: KAB

Scale: NTS

Date: 11/19/2024

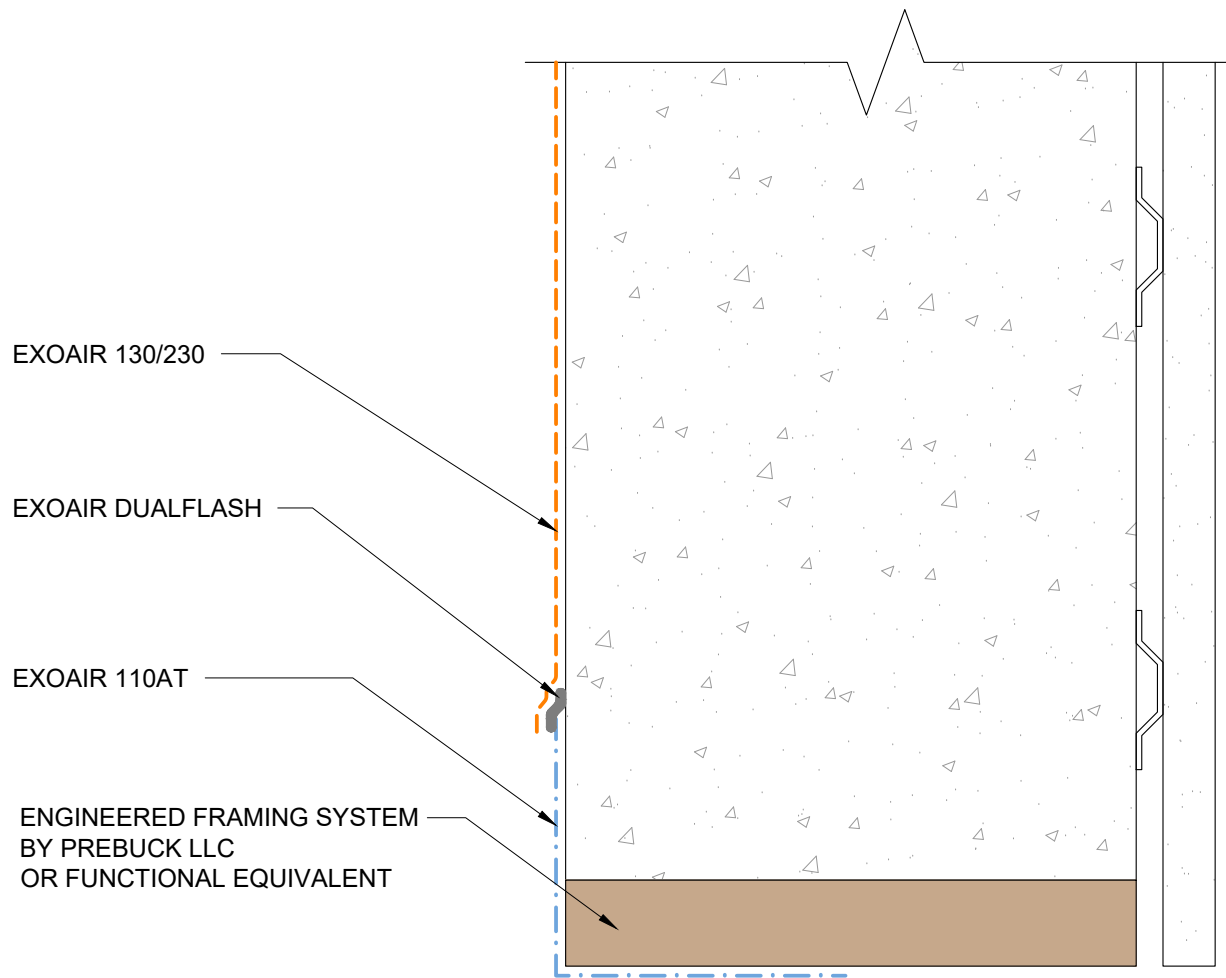
File Name:

DF-WH-01

[www.tremcocpg.com](http://www.tremcocpg.com)





Construction Products Group

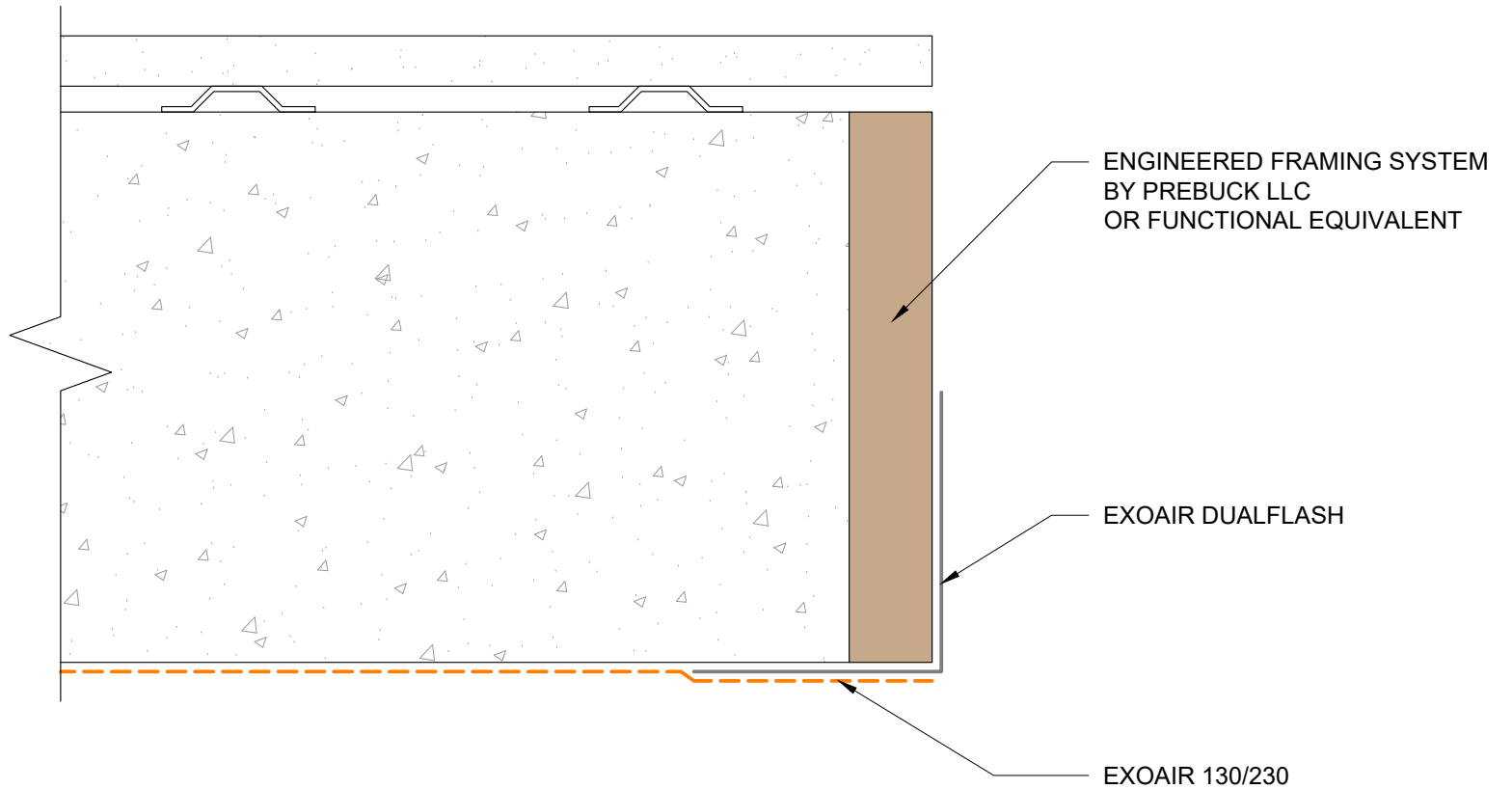


NOTES: WINDOW AND BUILDING FACADE NOT SHOWN FOR CLARITY

*This detail is for general informational purposes only. The project design professional determines, in its sole discretion, whether this detail or a functionally equivalent detail is best suited for the project with respect to any architecture, engineering, and design requirements, including any local building code requirements. If this document is not reviewed and the product is not approved for use by a licensed design professional, the customer agrees that the detail may contain substantive flaws requiring correction, and hereby releases Tremco CPG Inc. from any and all liability related to the design and installation of the product. This detail is subject to change without notice. Contact Tremco to ensure you have the most recent version.*

**ExoAir DualFlash**



 Tremco Technical Support: 866-209-2404	Detail: Head - ExoAir 110/110AT Option			File Name:	 Construction Products Group
	Drawn by: HDE	Checked by: CB	Scale: NTS	DF-WH-02	
	Revision #: 01	Revised by: KAB	Date: 11/19/2024		
<small>www.tremcocpg.com</small>					

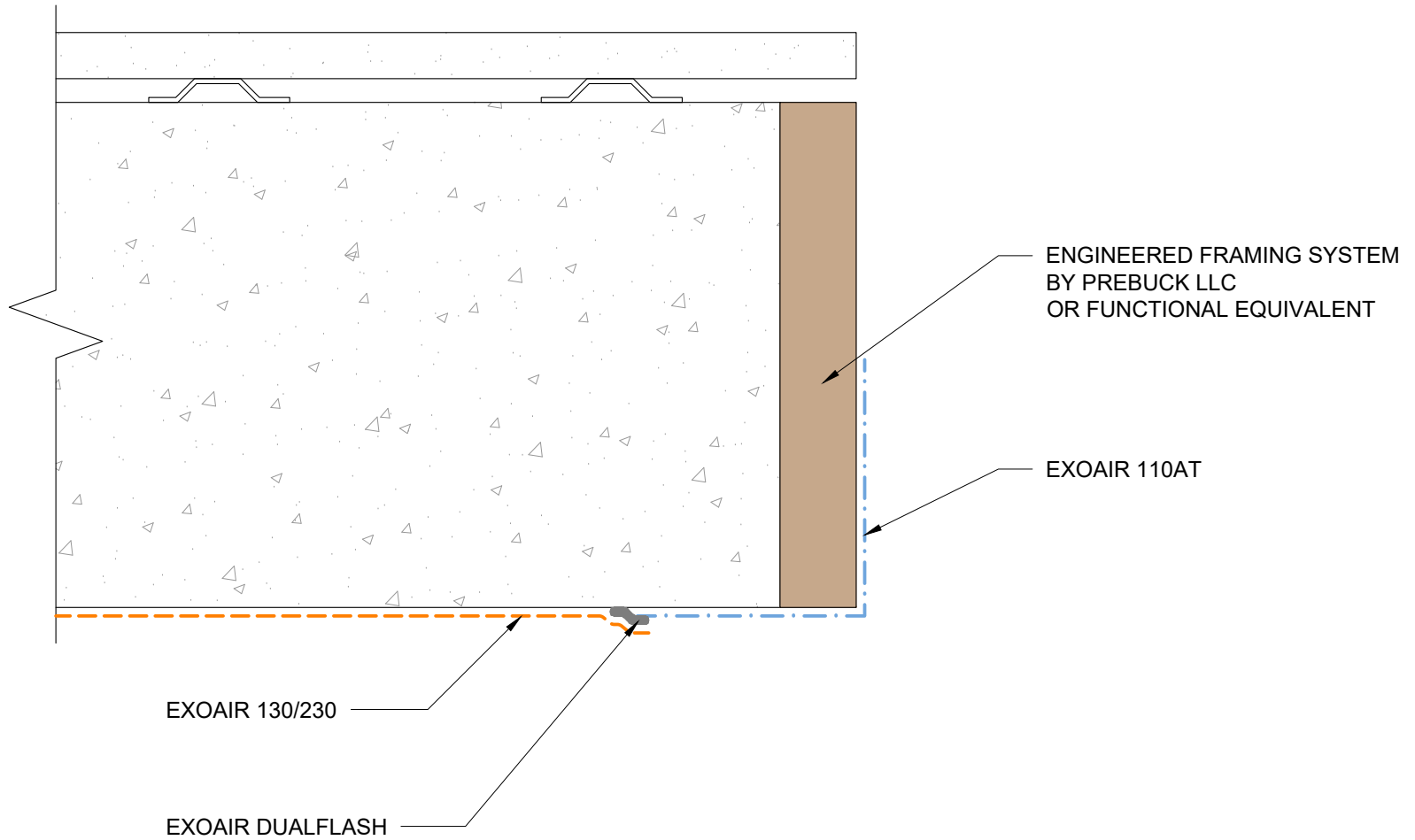


NOTES: WINDOW AND BUILDING FACADE NOT SHOWN FOR CLARITY

*This detail is for general informational purposes only. The project design professional determines, in its sole discretion, whether this detail or a functionally equivalent detail is best suited for the project with respect to any architecture, engineering, and design requirements, including any local building code requirements. If this document is not reviewed and the product is not approved for use by a licensed design professional, the customer agrees that the detail may contain substantive flaws requiring correction, and hereby releases Tremco CPG Inc. from any and all liability related to the design and installation of the product. This detail is subject to change without notice. Contact Tremco to ensure you have the most recent version.*

**ExoAir DualFlash**



 Tremco Technical Support: 866-209-2404	Detail: Jamb			File Name: <b>DF-WJ-01</b>	 Construction Products Group
	Drawn by: HDE	Checked by: CB	Scale: NTS		
	Revision #: 01	Revised by: KAB	Date: 11/19/2024		
<small>www.tremcocpg.com</small>					



NOTES: WINDOW AND BUILDING FACADE NOT SHOWN FOR CLARITY

*This detail is for general informational purposes only. The project design professional determines, in its sole discretion, whether this detail or a functionally equivalent detail is best suited for the project with respect to any architecture, engineering, and design requirements, including any local building code requirements. If this document is not reviewed and the product is not approved for use by a licensed design professional, the customer agrees that the detail may contain substantive flaws requiring correction, and hereby releases Tremco CPG Inc. from any and all liability related to the design and installation of the product. This detail is subject to change without notice. Contact Tremco to ensure you have the most recent version.*

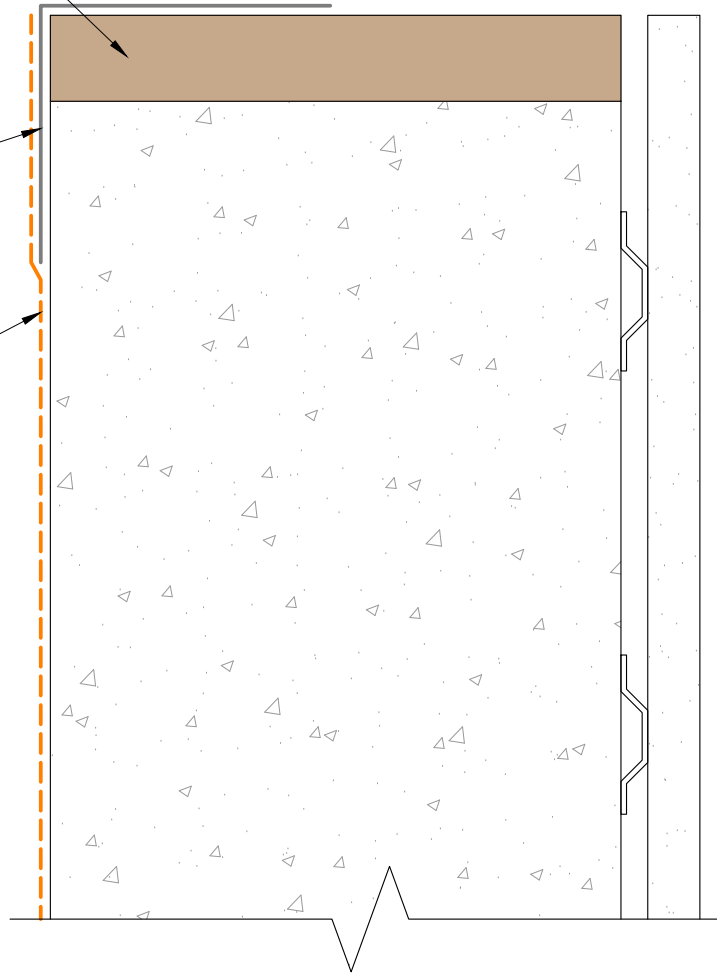
**ExoAir DualFlash**

 Tremco Technical Support: 866-209-2404	Detail: Jamb - ExoAir 110/110AT Option			File Name:	 DF-WJ-02 Construction Products Group
	Drawn by: HDE	Checked by: CB	Scale: NTS		
	Revision #: 01	Revised by: KAB	Date: 11/19/2024		
<small>www.tremcocpg.com</small>					

ENGINEERED FRAMING SYSTEM  
BY PREBUCK LLC  
OR FUNCTIONAL EQUIVALENT

EXOAIR DUALFLASH

EXOAIR 130/230



NOTES: WINDOW AND BUILDING FACADE NOT SHOWN FOR CLARITY

*This detail is for general informational purposes only. The project design professional determines, in its sole discretion, whether this detail or a functionally equivalent detail is best suited for the project with respect to any architecture, engineering, and design requirements, including any local building code requirements. If this document is not reviewed and the product is not approved for use by a licensed design professional, the customer agrees that the detail may contain substantive flaws requiring correction, and hereby releases Tremco CPG Inc. from any and all liability related to the design and installation of the product. This detail is subject to change without notice. Contact Tremco to ensure you have the most recent version.*

**ExoAir DualFlash**



Tremco Technical Support: 866-209-2404

Detail: Jamb			File Name:  DF-WS-01
Drawn by: HDE	Checked by: CB	Scale: NTS	
Revision #: 01	Revised by: KAB	Date: 11/19/2024	

[www.tremcocpg.com](http://www.tremcocpg.com)



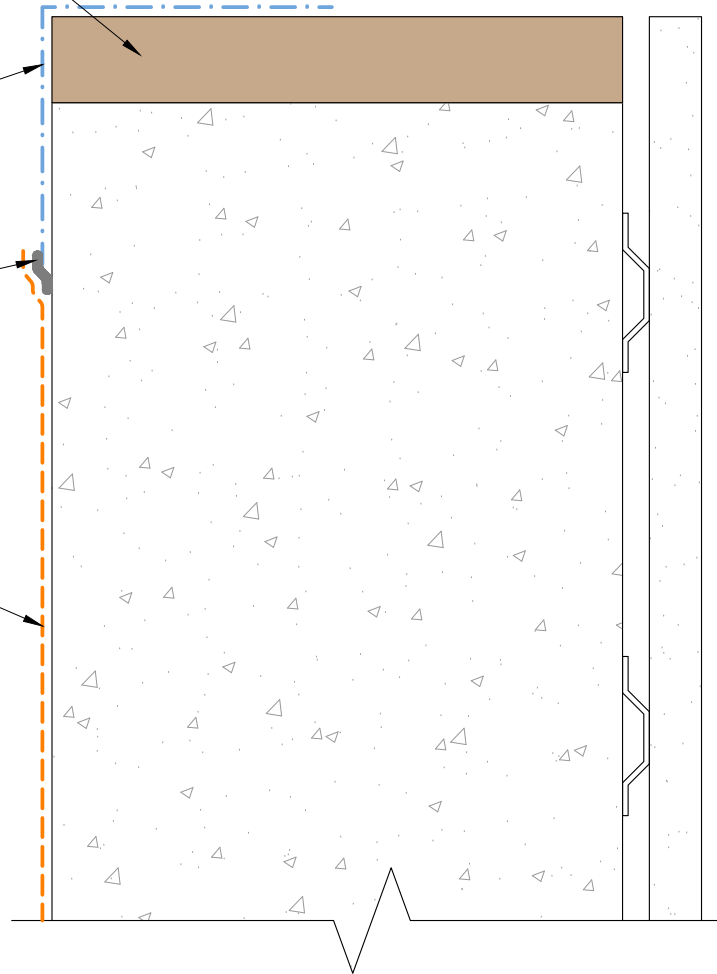
Construction Products Group

ENGINEERED FRAMING SYSTEM  
BY PREBUCK LLC  
OR FUNCTIONAL EQUIVALENT

EXOAIR 110AT

EXOAIR DUALFLASH

EXOAIR 130/230



NOTES: WINDOW AND BUILDING FACADE NOT SHOWN FOR CLARITY

*This detail is for general informational purposes only. The project design professional determines, in its sole discretion, whether this detail or a functionally equivalent detail is best suited for the project with respect to any architecture, engineering, and design requirements, including any local building code requirements. If this document is not reviewed and the product is not approved for use by a licensed design professional, the customer agrees that the detail may contain substantive flaws requiring correction, and hereby releases Tremco CPG Inc. from any and all liability related to the design and installation of the product. This detail is subject to change without notice. Contact Tremco to ensure you have the most recent version.*

**ExoAir DualFlash**



Tremco Technical Support: 866-209-2404

Detail: Jamb - ExoAir 110/110AT Option

Drawn by: HDE

Revision #: 01

Checked by: CB

Revised by: KAB

Scale: NTS

Date: 11/19/2024

File Name:

DF-WS-02



Construction Products Group

[www.tremcocpg.com](http://www.tremcocpg.com)