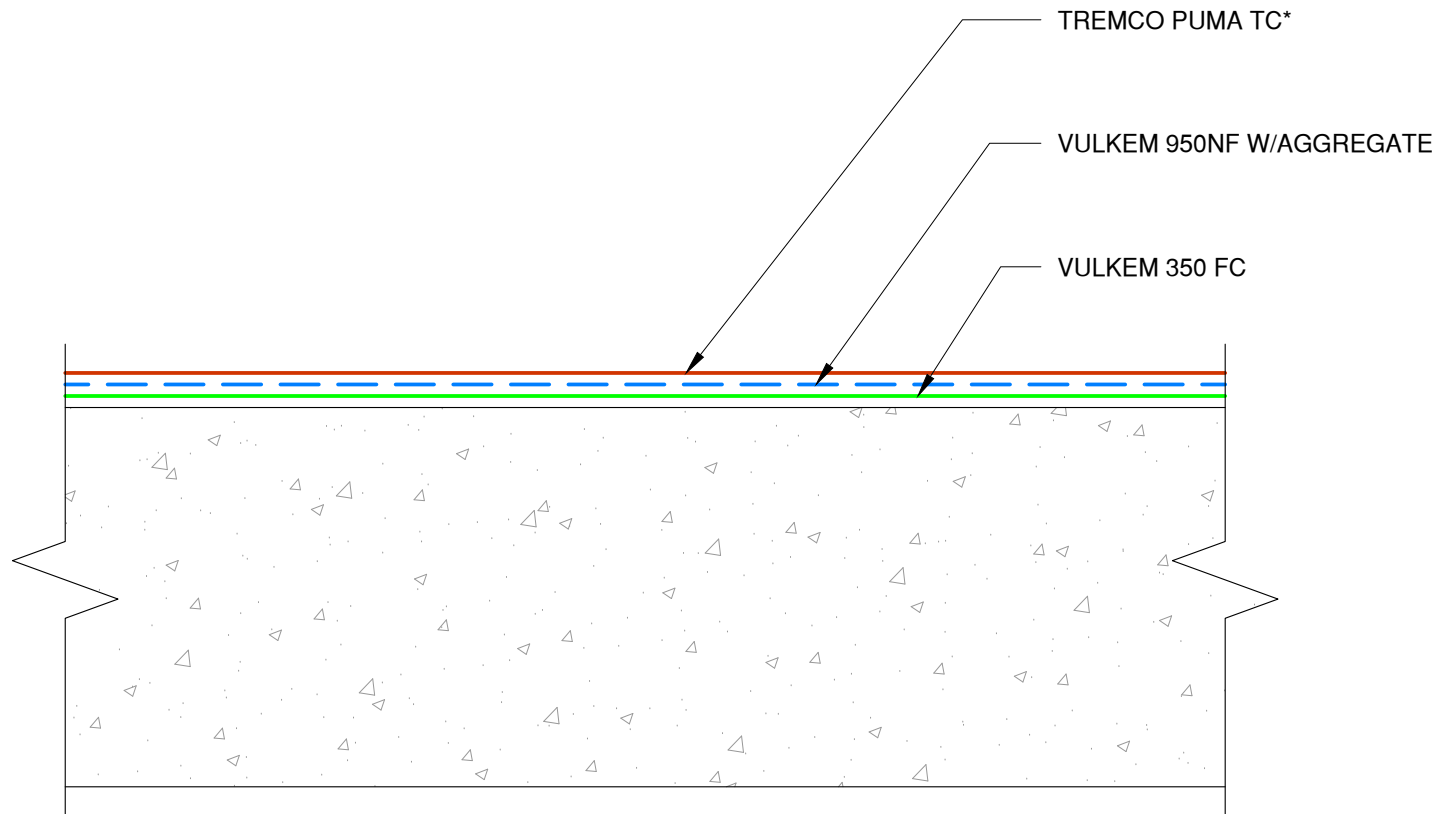




*A COMPONENT OF THE VULKEM® EWS TRAFFIC COATING SYSTEM WITH PUMA (POLYURETHANE METHACRYLATE)



This detail is for general informational purposes only. The project design professional determines, in its sole discretion, whether this detail or a functionally equivalent detail is best suited for the project with respect to any architecture, engineering, and design requirements, including any local building code requirements. If this document is not reviewed and the product is not approved for use by a licensed design professional, the customer agrees that the detail may contain substantive flaws requiring correction, and hereby releases Tremco CPG Inc. from any and all liability related to the design and installation of the product. This detail is subject to change without notice. Contact Tremco to ensure you have the most recent version.

Vulkem 350FC/950NF/EWS Hybrid

 Tremco Technical Support: 866-209-2404	Detail: Vulkem 350FC/950NF/EWS Hybrid System			File Name:	 Construction Products Group
	Drawn by: KAB	Checked by: EL	Scale: NTS	DC-H-P-G-01	
	Revision #: 00	Revised by: -	Date: 4/21/2024		
www.tremcocpg.com					