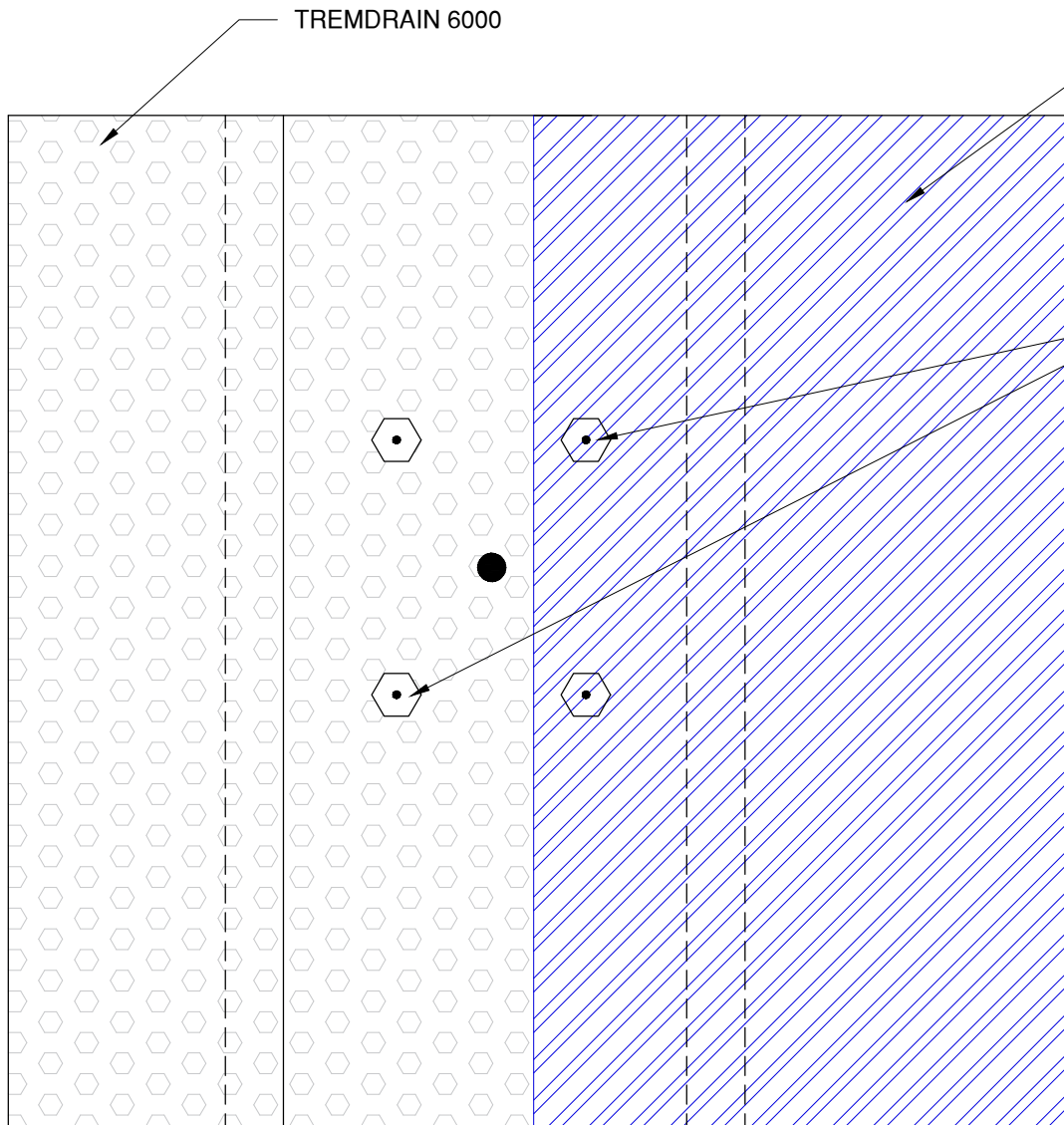


NOTE: NOT INTENDED FOR SUBMERGED OR HYDROSTATIC HEAD CONDITIONS



- 1) TREMDRAIN 6000
- 2) TREMCO 10-MIL CLASS A VAPOR BARRIER
- 3) TREMPROOF 260 AT 60 DRY MILS OR >

2-3" MIN. HEXAGONAL OR SQUARE PIN/WASHER TO PREVENT DEFLECTION

TREMDRAIN 6000 NOT TO FLEX MORE THAN 1" AROUND DOWEL DETAIL/OPENINGS. 2-3" MIN. PINS/WASHERS TO BE INSTALLED AROUND DOWEL OPENINGS TO PREVENT DRAINAGE BOARD DEFLECTION. THE NUMBER OF PINS/WASHERS AND SPACING TO BE DETERMINED BY SITE CONDITIONS.

ALL DOWEL PINS/WASHERS TO BE SEALED/COVERED WITH TREMPROOF 260 AT 90 DRY MILS. REFERENCE PENETRATION DETAILS FOR PROPER DETAILING.

The architecture, engineering, and design of the project using the Tremco products are the responsibility of the project's design professional. All products and systems must comply with local building codes and standards. This detail is for general information and guidance only and Tremco specifically disclaims any liability for the use of this detail. The project design professional determines, in its sole discretion, whether this detail or a functionally equivalent detail is best suited for the project. This detail is subject to change without notice. Contact Tremco to ensure you have the most recent version.

TREMPROOF 260 BLINDSIDE



Tremco Technical Support: 866-209-2404

Detail: TREMPROOF 260 with Tremco 10-Mil Class A Vapor Barrier at Mechanically Pinned TREMDRAIN 6000 around Dowel Penetrations

Drawn by: HDE

Checked by: WH

Scale: NTS

Date: 2/21/2023

File Name:

F-BSW-VB-G-03



Construction Products Group

www.tremcocpg.com