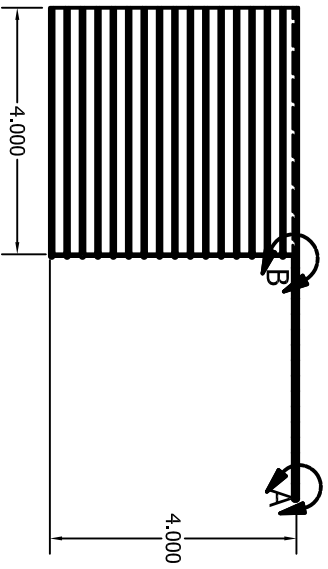
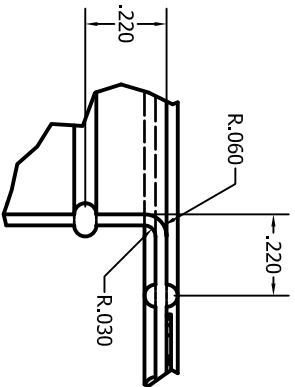
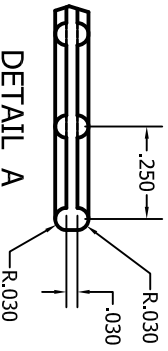


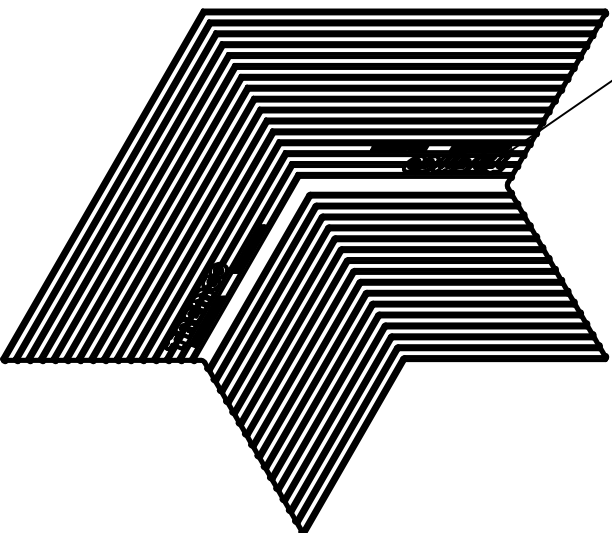
DETAIL B
SCALE 3 : 1



DETAIL A
SCALE 3 : 1



Logo and Part No. Text: = .012" Thk



EXTRUSION DWT LENGTH TOLERANCE	No.	Date	Description	By
0 - 1.59"	-	00-00-00	-	-
1.6" - 2.29"	±.080"			
2.5" - 3.99"	±.100"			
4.0" - 6.29"	±.130"			
6.3" - 9.99"	±.160"			
10.0" - 15.99"	±.200"			
16.0" - 24.99"	±.250"			
25.0" - 39.99"	±.400"			
40.0" - 62.99"	±.500"			
63.0" - 99.99"	±.630"			
100.0" - 159.99"	±.800"			
160.0" +	±.50%			

		1451 Jacobson Ave Ashland, Ohio 44805 U.S.A. Phone : 800-321-6357 Fax : 419-289-6645	
Customer: Proglaze ETA Connection		Customer Part No.: TX-17661S_rev2	
Project: Proglaze ETA Connection	Rev No.: 2	Drawn by: E. Tango	Scale: 1:2
Compound: -	Design F.C.: -	Date: 7/19/2010	Drawing No.: ETA-17661S
Diameter: -	Area: -		

The design of the gasket shown herein is the product of Tremco Incorporated. No reproduction or use of this design is authorized without the consent of Tremco Incorporated.

4

3

4

2

1