

BACKER ROD

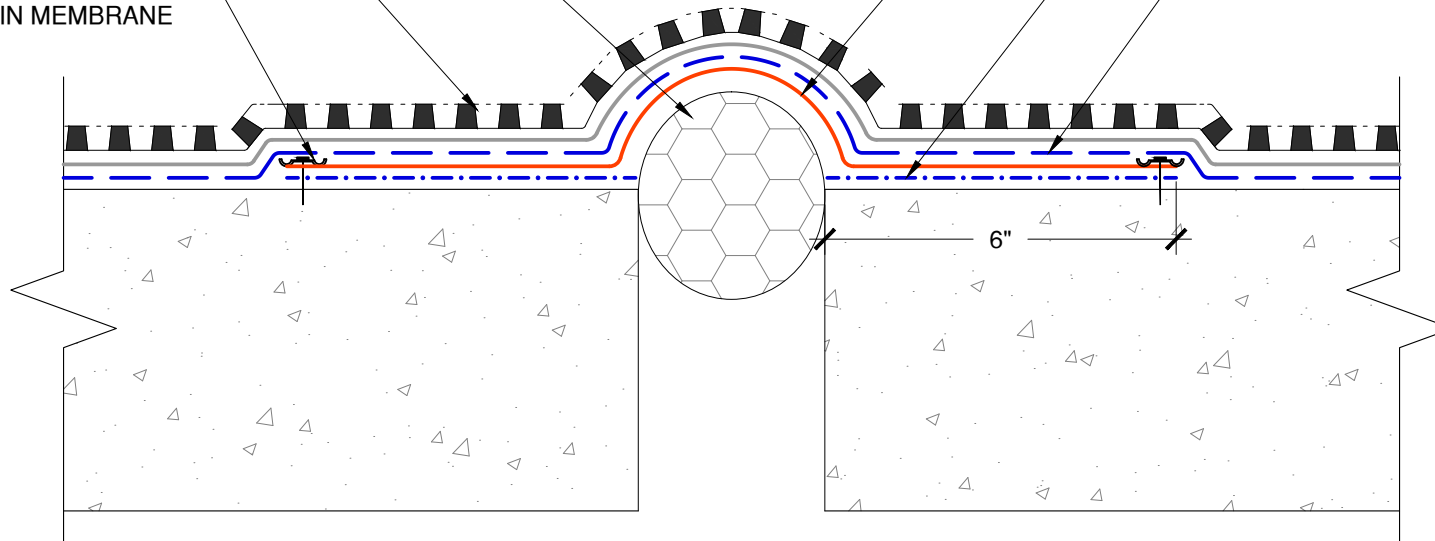
TREMDRAIN, AS SPECIFIED

TERMINATE TRA/ELASTOMERIC SHEETING WITH PARATERM BAR, FULLY EMBEDDED IN MEMBRANE

TRA OR ELASTOMERIC SHEETING, EXTEND A MINIMUM OF 6" ON BOTH SIDES OF EXPANSION JOINT

DETAIL COAT OF TREMPROOF 250GC AT 30 MILS

TREMPROOF 250GC



The architecture, engineering, and design of the project using the Tremco products are the responsibility of the project's design professional. All products and systems must comply with local building codes and standards. This detail is for general information and guidance only and Tremco specifically disclaims any liability for the use of this detail. The project design professional determines, in its sole discretion, whether this detail or a functionally equivalent detail is best suited for the project. This detail is subject to change without notice. Contact Tremco to ensure you have the most recent version.

### TREMProof 250GC



Detail: TREMProof 250GC at Floor to Floor Expansion Joint with TRA/Elastomeric Sheeting

File Name:

Drawn by: KAB

Checked by: WH

Scale: NTS

Date: 2/25/2022

C-250GC-EJ-FF-01



Tremco Technical Support: 866-209-2404

[www.tremcocpg.com](http://www.tremcocpg.com)