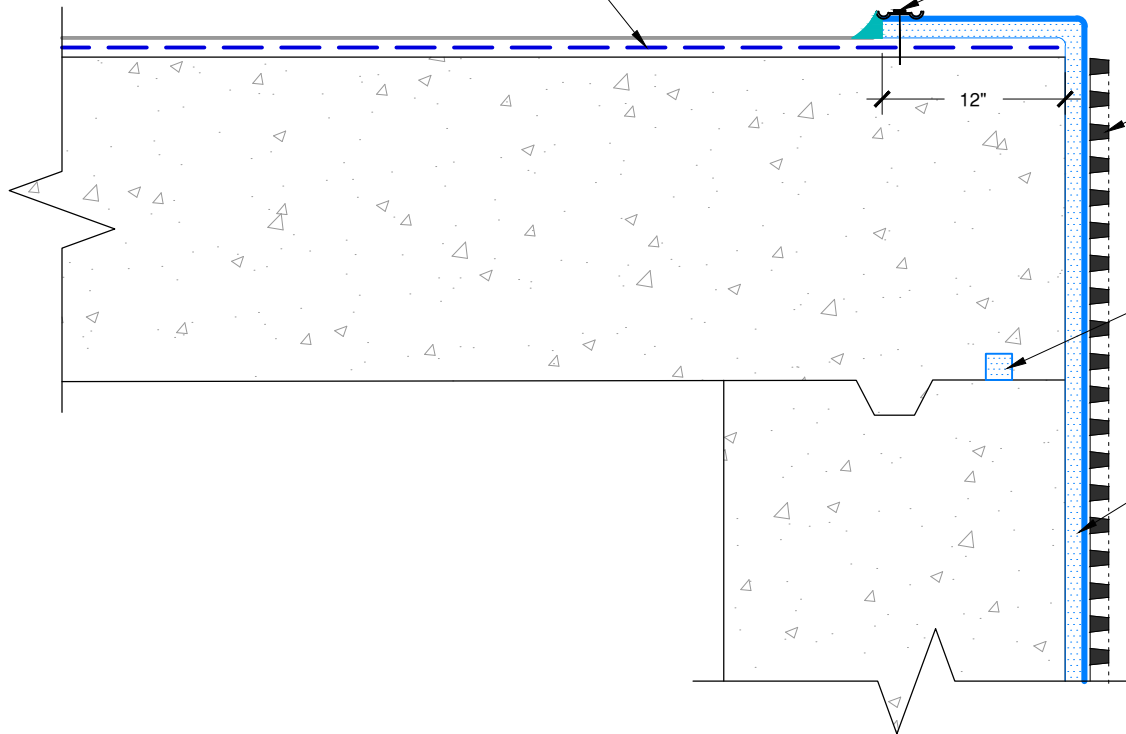


FLUID APPLIED TREMCO MEMBRANE,
AS SPECIFIED

PARATERM BAR NAILED EVERY 8" O.C. AND
SEALED WITH A CANT BEAD OF APPROVED
SEALANT



TREMDRAIN, AS SPECIFIED

SUPERSTOP, 2" FROM FACE OF WALL

PARASEAL LG, BENTONITE SIDE
AGAINST CONCRETE

NOTES: PARASEAL PRODUCTS REQUIRE A MIN 24 PSF OF
COMPACTION/CONFINEMENT IN ORDER TO FUNCTION AS DESIGNED.

NOT RECOMMENDED FOR USE IN SUBMERGED CONDITIONS.

The architecture, engineering, and design of the project using the Tremco products are the responsibility of the project's design professional. All products and systems must comply with local building codes and standards. This detail is for general information and guidance only and Tremco specifically disclaims any liability for the use of this detail. The project design professional determines, in its sole discretion, whether this detail or a functionally equivalent detail is best suited for the project. This detail is subject to change without notice. Contact Tremco to ensure you have the most recent version.

Paraseal LG Blind Side Walls



Detail: Paraseal LG at Transition to Fluid Applied Membrane at Top of Deck

File Name:

Drawn by: KAB

Checked by: SP/WH

Scale: NTS

Date: 3/7/2022

BSW-LG-T-06



Tremco Technical Support: 866-209-2404

www.tremcocpg.com