

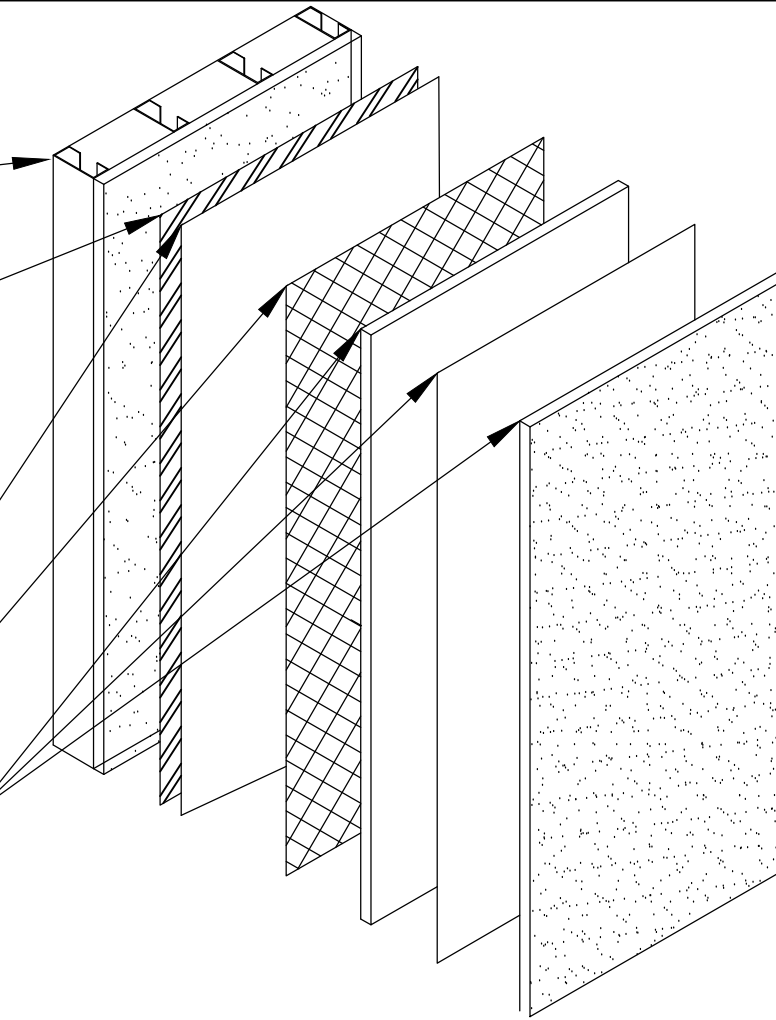
Steel Stud/ Exterior Sheathing  
Backup Wall

ExoAir 220/230

Grade D Building paper

Mechanically Fastened  
Metal Lath

Stucco Coating (2 or 3  
coats pending  
Manufacturer)



Rev #  
00

File Name:  
13460

Sheet Number:  
Date: 07/21/2014

Detail: Stucco Isometric- Permeable Fluid (Exterior Sheathing)

Drawn by: KAB  
Checked by: SM  
Scale: None

This detail is intended for conceptual purposes only. Detail must be reviewed by a project/design professional.  
See [www.tremcosealants.com](http://www.tremcosealants.com) for the most up-to-date product information

Rev	Date	Description	By
-	-	-	-

**TREMCO**  
[www.tremcosealants.com](http://www.tremcosealants.com)

3735 Green Road • Beachwood, OH 44122  
Phone : 866-209-2404 • Fax : 216-766-5535