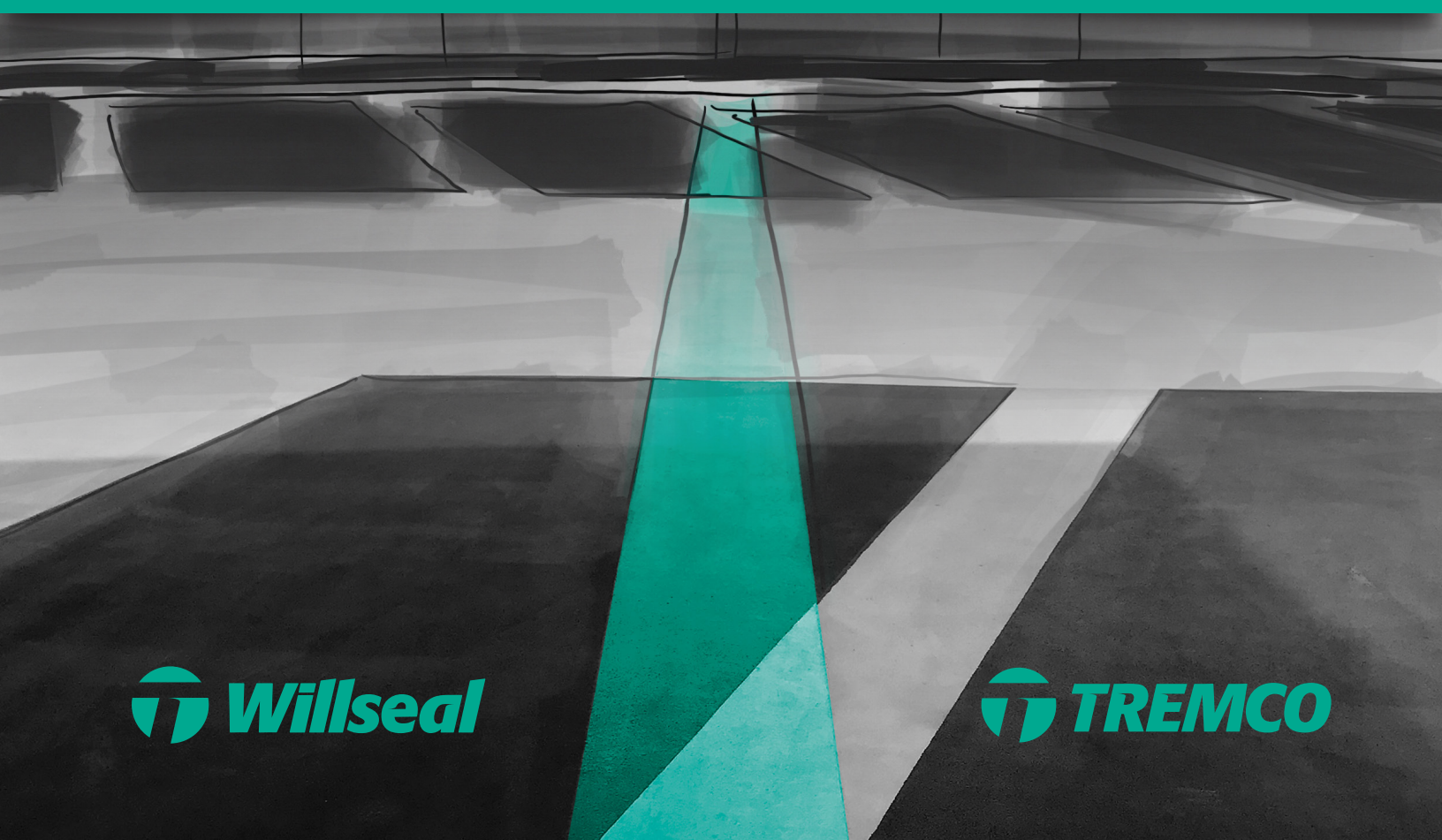




# EXPANSION JOINTS & TRANSITION SEALANTS

*Pre-Compressed, Acrylic-Impregnated Foams | Preformed Extrusions  
Closed-Cell Foams | Monolithic Polyurethane Methacrylate | Gun-Grade Foams*







# EXPANSION JOINT SYSTEMS

Willseal's best-in-class pre-compressed and acrylic-impregnated foam products for horizontal and vertical joint applications.

Tremco's industry-leading joint sealants, polyurethane-methacrylate technology, pre-formed extrusions and gun-grade foams.

For over 110 combined years, our products have been continuously specified and installed on thousands of new construction

and restoration projects worldwide, and have always stood for the highest quality sealants.

Willseal and Tremco products are designed for maximum waterproofing, thermal, sound, and air-tightness to meet global passive housing standards — and feature superior durability, excellent +/- movement capabilities, and streamlined installation.

## MARKETS SERVED:

- Commercial construction
- Industrial / manufacturing
- Educational and institutional
- Infrastructure and DOT
- Residential construction
- Stadiums and arenas
- Parking facilities
- Medical facilities
- Fire protection

## JOINT APPLICATIONS:

- Traffic-grade horizontal joints
- Primary vertical joints
- Curtain walls, windows and flashing
- Control, longitudinal and transverse joints
- Dryvit® and exterior panel system joints
- Pre-cast concrete and built-up walls
- Fire-rated joints
- Seismic, large and retrofit joints
- Below-grade applications

# CONTENTS

Expansion Joint Systems Overview.....	2
Joint Selection Guide.....	4-5
Expansion Joint Products.....	6
Color Options .....	6
<b>Willseal® Foam Joint Sealants.....</b>	<b>7-11</b>
Willseal® 150.....	7
Willseal® 250.....	7
Willseal® 600.....	8
Willseal® 600s.....	8
Willseal® Color Coreseal V.....	9
Willseal® Color Coreseal H.....	9
Willseal® FR-V.....	10
Willseal® FR-H.....	10
Willseal® Seismic.....	11
Willseal® Coreseal.....	11
Willseal® PF100.....	12
<b>Tremco® Pre-Formed Extrusions.....</b>	<b>12-13</b>
Proglaze® ETA.....	12
Dymonic® Simple Seal.....	13
Spectrem® Simple Seal.....	13
<b>Tremco® Gun-Grade Foam Accessories.....</b>	<b>14</b>
ExoAir® Flex Foam.....	14
ExoAir® LEF .....	14





# JOINT SELECTION GUIDE

## APPLICATIONS & PROPERTIES

PRODUCT	Movement	Horizontal	Vertical	Transition-in-Plane	Fire-Rated	Primary Seal	Secondary Seal	Traffic-Rated
Willseal® 150	+/- 50%		•			•	•	
Willseal® 250	+/- 50%	•		•		•		•
Willseal® 600	+/- 50%		•			•		
Willseal® 600s	+/- 50%		•				•	
Willseal® Coreseal	+/- 25%	•	•			•	•	
Willseal® Color Coreseal V	+/- 25%		•	•		•		
Willseal® Color Coreseal H	+/- 25%	•		•		•		
Willseal® FR-V <sup>1</sup>	+/- 50%		•	•	•	•		
Willseal® FR-H <sup>1</sup>	+/- 50%	•		•	•	•		•
Willseal® Seismic	+/- 50%		•	•		•		
Willseal® PF100	+/- 50%		•			•	•	
Dymonic® Simple Seal	+/- 200%	•	•	•		•		
Spectrem® Simple Seal	+/- 200%	•	•	•		•		
Proglaze® ETA	+/- 200%	•	•	•		•		
ExoAir® Flex Foam (Accessory)	+/- 15%	•	•				•	
ExoAir® Flex LEF (Accessory)		•	•				•	

<sup>1</sup> FR-V and FR-H max throat openings are dependent on UL system listing. Please reach out to Tech Resources for additional information.

Reference the current product data sheets on our website at [www.tremcosealants.com](http://www.tremcosealants.com) for more specific product information.

For specific tie-in recommendations and instructions, please contact your local Tremco Sales or Technical Service Representative.

# JOINT SELECTION GUIDE

## APPLICATIONS & PROPERTIES

PRODUCT	UV Stable	Low VOC	Below-Grade Horizontal	Monolithic / Seamless	1/2" to 6" Throat Opening	1/2" to 4" Throat Opening	Thermal Resistance	Many Color Options
Willseal® 150	•	•			•	•		
Willseal® 250	•	•			•	•		
Willseal® 600	•	•			•	•		
Willseal® 600s	•	•			•	•		
Willseal® Coreseal	•	•			•	•		
Willseal® Color Coreseal V	•	•			•	•	•	•
Willseal® Color Coreseal H	•	•	•		•	•	•	•
Willseal® FR-V	•	•					•	•
Willseal® FR-H	•	•					•	•
Willseal® Seismic	•	•			•	•	•	•
Willseal® PF100	•	•					•	
Dymonic® Simple Seal		•			•			
Spectrem® Simple Seal	•	•			•	•		•
Proglaze® ETA	•	•			•	•		
ExoAir® Flex Foam (Accessory)				•	•	•	•	
ExoAir® Flex LEF (Accessory)				•	•	•	•	

<sup>1</sup> FR-V and FR-H max throat openings are dependent on UL system listing. Please reach out to Tech Resources for additional information.

Reference the current product data sheets on our website at [www.tremcosealants.com](http://www.tremcosealants.com) for more specific product information.

For specific tie-in recommendations and instructions, please contact your local Tremco Sales or Technical Service Representative.

# EXPANSION JOINT PRODUCTS

With a wide variety of pre-compressed, acrylic-impregnated foams, pre-formed extrusions, monolithic Polyurethane Methacrylate and gun-grade foams, Willseal and Tremco have the ideal solution for any expansion joint or transition sealant project.

Whether you require traffic-grade horizontal, color-matched vertical, 2 to 3 hour fire-rated,

seismic capabilities, waterproof, soundproof, dust-proof or airtight seals, you'll find a variety of options in the following pages.

All products, however, feature unmatched quality and durability, excellent +/- movement capabilities, and innovative, streamlined installations designed to help create safer, greener, high-performance structures.

## COLOR OPTIONS

Many of our joint sealant solutions are available finished in any standard Spectrem® color — in addition to a broad range of industry standard colors. For even greater customization, we can custom-match most colors to blend in perfectly with your project.

*(Products with this icon indicate the availability of color options.)*



### SPECTREM® STANDARD COLORS

WHITE	PRECAST WHITE	IVORY	SANDSTONE	BUFF
OFF WHITE	LIMESTONE	ANODIZED ALUMINUM	GRAY	ALUMINUM STONE
LIGHT BRONZE	CHAMPAGNE	DUSTY ROSE	ADOBE TAN	RUSTIC BRICK
CHARCOAL	BRONZE	DARK BRONZE	BLACK	

All colors shown are approximate and may not reflect sheen or shade precisely, as varying amounts of aggregate will alter light-reflecting properties. Tremco always recommends a test patch to gain final color approval. Different lighting conditions can influence color appearance: for truer color please view in daylight. Some colors may require a minimum quantity. Custom colors are available upon request. Contact Tremco Customer Service for more information.

## Willseal® 150

Willseal® 150 is a pre-compressed, self-expanding foam joint sealant, engineered to perform as a highly flexible, weathertight, primary seal in vertical exterior applications. Willseal 150 is specifically designed to provide a permanent seal against rain, wind, sound, and dust. Willseal 150 is waterproof to a wind-driven rain at 16.1 psf (90mph) making an optimal primary joint.

### FEATURES & BENEFITS:

- No unbonded laminations
- Paintable with water-based paints
- Can be installed in many weather and temperature conditions
- No mixing, masking, staining or mess

### COMMON APPLICATIONS:

- Primary vertical construction and expansion joints
- Dryvit / exterior panel systems - masonry, stone, EIFS, curtain walls
- Manufactured housing and log homes
- Pre-cast concrete walls, tilt-up walls



## Willseal® 250

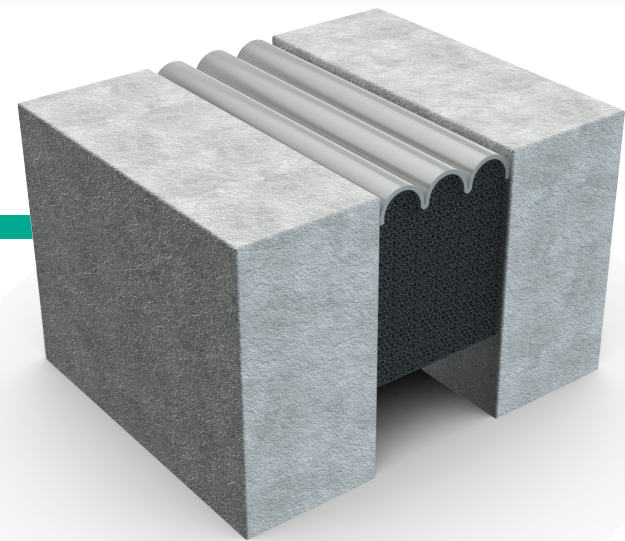
Willseal® 250 is a pre-compressed, self-expanding foam joint sealant with a traffic grade silicone coating engineered to perform in horizontal applications subject to solvents and fuels such as those found in parking garages, road and bridge joints, and airport runways. Willseal 250 is specifically designed to provide a maximum seal in structures with shear and rapid movement.

### FEATURES & BENEFITS:

- Allows for up to 100% (±50%) movement from mean joint size
- Designated as a dual expansion joint seal
- Advanced acrylic impregnation without heavy fillers
- True tensionless system

### COMMON APPLICATIONS:

- Primary horizontal expansion joints with vehicular traffic
- Parking garages, road and bridge joints
- Plaza decks on grade





# Willseal® 600

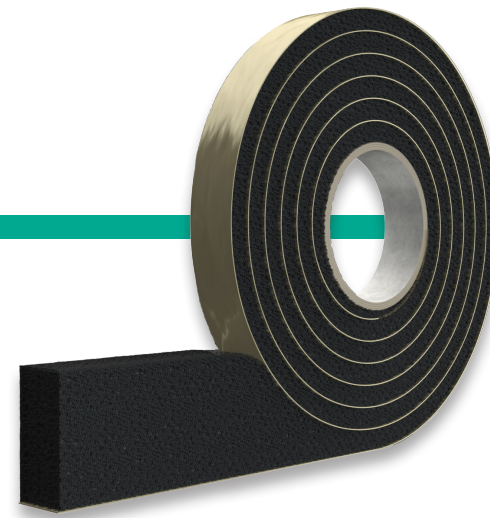
Willseal® 600 is a pre-compressed, self-expanding foam joint sealant, engineered to perform as a highly flexible, weathertight, primary seal in vertical exterior applications. Willseal 600 can also provide the ideal foundation for a large variety of wet sealants, such as silicone, polyurethane, polysulfide, and acrylic if desired.

## FEATURES & BENEFITS:

- Driving-rain-tight up to 12.5 psf
- Never under tension or cohesion strain
- Minimal surface prep and no priming required
- Vapor-permeable, paintable, and seals gaps as small as 1/8"

## COMMON APPLICATIONS:

- Primary expansion, control, isolation and retrofit joints
- Dryvit / Exterior panel systems - masonry, stone, EIFS, curtain walls
- Pre-cast concrete walls, tilt-up walls
- Window and flashing applications
- Interior vapor, dust, acoustical and air control



# Willseal® Color Coreseal V

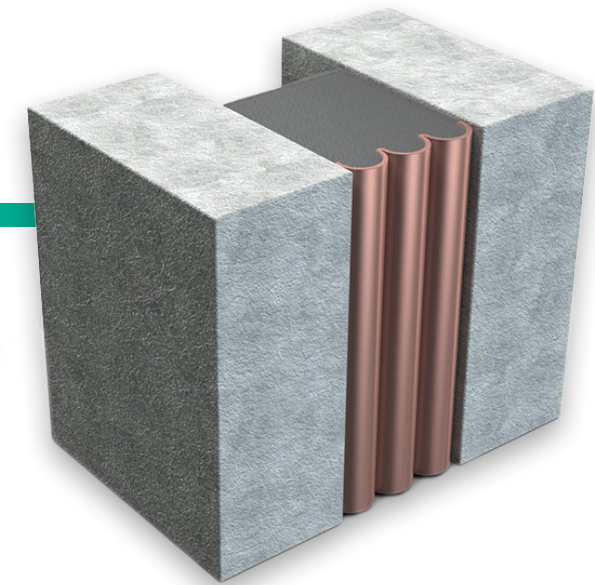
Willseal® Color Coreseal V is a vertical dense, closed cell foam for larger movement joints. It has a colorized silicone skin on the exposed face for chemical and puncture resistance in a waterproof joint. Due to its strong closed cell structure, it has excellent compression, tension and shear capabilities.

## FEATURES & BENEFITS:

- Accommodates rapid rates of joint movement (ASTM E1399, Class II & III)
- Made from a monolithic foam that will not delaminate like multi-layer or compression-bonded products

## COMMON APPLICATIONS:

- Primary vertical joints
- Seismic, large and retrofit joints
- Large expansion joints requiring an architectural finish



# Willseal® 600s

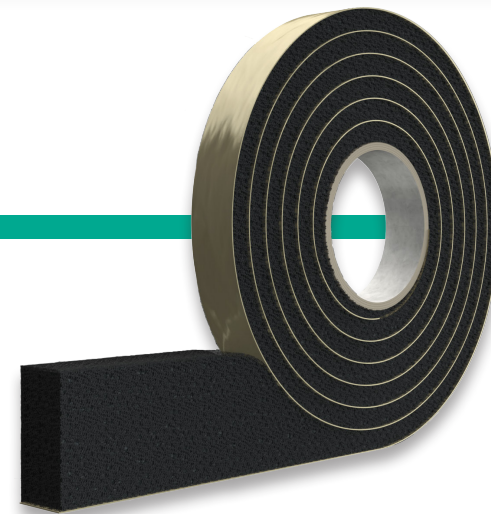
Willseal® 600s is a pre-compressed, self-expanding foam joint sealant, engineered to perform as a highly flexible, weathertight, secondary seal in vertical exterior applications. Willseal 600s can also provide the ideal foundation for a large variety of wet sealants, such as silicone, polyurethane, polysulfide, and acrylic.

## FEATURES & BENEFITS:

- Allows for up to 100% (+/- 50%) movement
- Never under tension or cohesion strain
- Minimal surface prep and no priming required

## COMMON APPLICATIONS:

- Secondary construction joints – for use behind wet-applied sealants
- Dryvit / exterior panel systems - masonry, stone, EIFS, curtain walls
- Pre-cast concrete walls, tilt-up walls
- Window and flashing applications
- Interior vapor, dust, acoustical and air control



# Willseal® Color Coreseal H

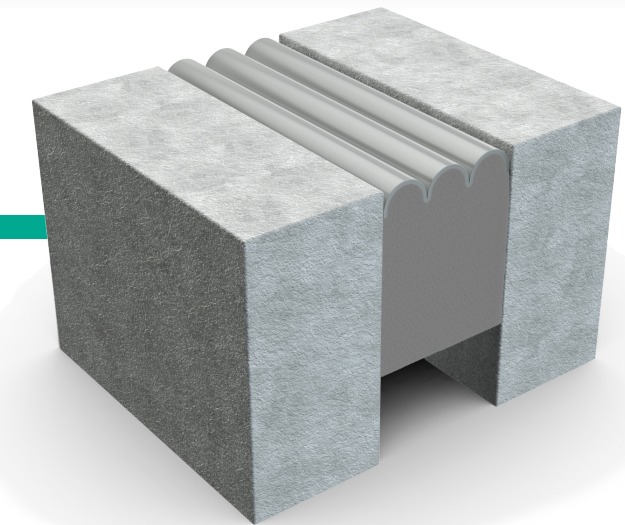
Willseal® Color Coreseal H is a dense, closed cell foam for larger movement joints. It has a traffic grade silicone skin on the exposed face which provides resistance to gasoline and oil. Due to its strong closed cell structure, it has excellent compression, tension and shear capabilities. It is installed with epoxy that permanently bonds the Color Coreseal H in place.

## FEATURES & BENEFITS:

- Accommodates rapid rates of joint movement (ASTM E1399, Class II & III)
- Monolithic foam will not delaminate like multi-layer products

## COMMON APPLICATIONS:

- Below-grade applications
- Highway longitudinal and transverse joints
- Bridge and parking expansion joints (with traffic grade silicone)
- Seismic, large and retrofit joints





## Willseal® FR-V

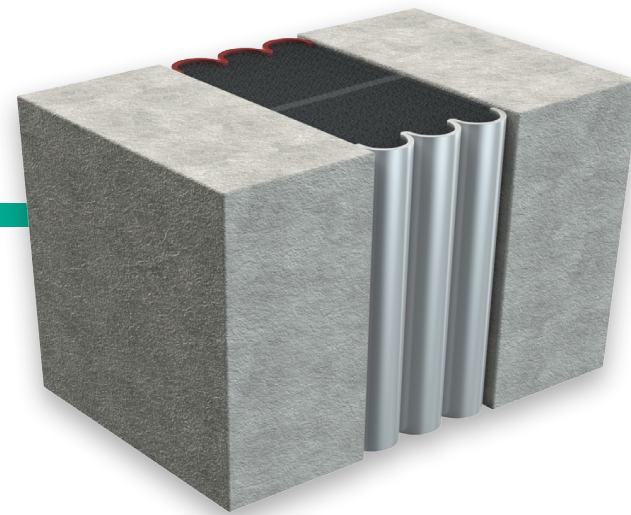
Willseal® FR-V is a factory controlled, watertight, clean handling, UV stable, sound attenuating, energy efficient and fire rated joint seal with a single, unified installation process. Willseal FR-V provides a 2- and 3-hour fire rated vertical seal.

### FEATURES & BENEFITS:

- Innovative internal smoke barrier prevents toxic gasses and fumes from penetrating the joint system
- Waterproof silicone faces on fire-retardant impregnated foam
- No need for additional intumescent bellows
- Non-invasive anchoring means no drilling or modification to the substrates
- UL 2079 tested and certified

### COMMON APPLICATIONS:

- Vertical wall installations
- Behind other expansion joint covers, plates or fillers



## Willseal® Seismic

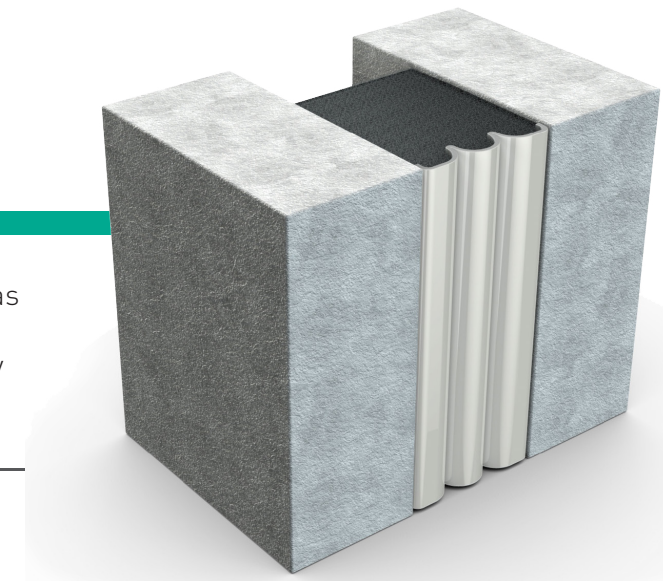
Willseal® Seismic is a one-step primary sealant for exposed areas where color matching is important. It has a puncture resistant, elastomeric coating on the exterior surface, which can be factory colored to match most construction substrates or sealants. The joint is watertight and color matched.

### FEATURES & BENEFITS:

- Accommodates rapid rates of joint movement
- Excellent compression recovery
- Permanently elastic and weathertight
- Allows for up to 100% (+/- 50%) movement

### COMMON APPLICATIONS:

- Primary vertical construction joints
- Expansion, control and isolation joints
- Retrofit and seismic joints
- Pre-cast concrete walls, tilt-up walls
- Dryvit / exterior panel systems - masonry, granite, metal, EIFS, curtain walls



## Willseal® FR-H

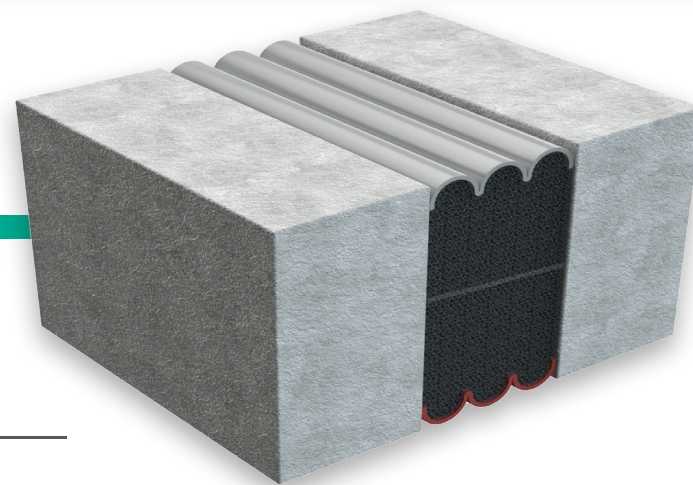
Willseal® FR-H is a factory controlled, watertight, clean handling, UV stable, sound attenuating, energy efficient and fire rated joint seal with a single, unified installation process. Willseal FR-H provides a 2- and 3-hour fire rated seal.

### FEATURES & BENEFITS:

- Innovative internal smoke barrier prevents toxic gasses and fumes from penetrating the joint system
- Waterproof silicone faces on fire-retardant impregnated foam
- No need for additional intumescent bellows
- Non-invasive anchoring means no drilling or modification to the substrates
- UL 2079 tested and certified

### COMMON APPLICATIONS:

- Horizontal expansion joints
- Behind other expansion joint covers, plates or fillers



## Willseal® Coreseal

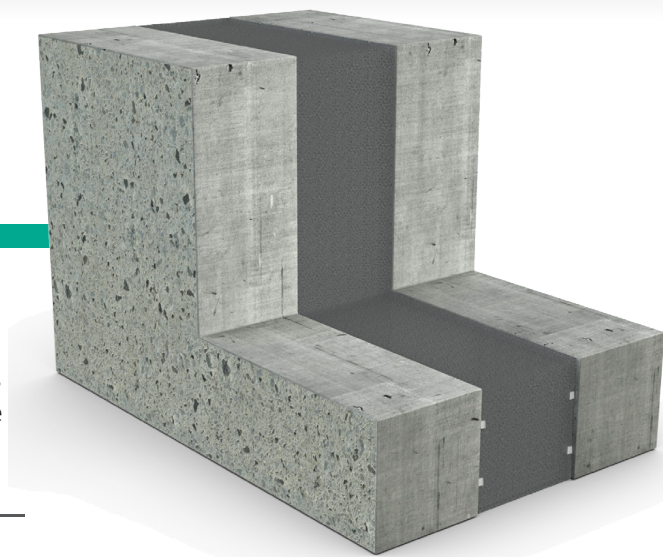
Willseal® Coreseal is a preformed, compressible system that is impermeable to water and provides a watertight seal. It meets all applicable standards for compressible sealants and performs under extreme conditions including bridge and parking structure expansion joints. It provides a watertight, dustproof, airtight, UV stable, chemically resistant, soundproof, and insulated seal.

### FEATURES & BENEFITS:

- Unique profile for easier install and less tension
- Watertight, airtight, dust-proof and soundproof
- Slip resistant

### COMMON APPLICATIONS:

- Primary horizontal and vertical joints
- Highway longitudinal and transverse joints
- Bridge and parking structure expansion joints





# Willseal® PF100

Willseal® PF100 is a pre-compressed, self-expanding foam joint seal, engineered to perform as a weathertight primary seal designed for use in various prefabricated applications.

## FEATURES & BENEFITS:

- UV stable
- Comprised of Low-Emitting Materials - Adhesives and Sealants (LEED Credit 4.1)
- Meets or exceeds the requirements of IBC testing for air barriers
- Compatible with various Tremco sealants and with many types of commercial construction substrates

## COMMON APPLICATIONS:

- Modular
- Panelization
- Tilt up and other off-site construction methods



# Dymonic® Simple Seal

Dymonic® Simple Seal is a medium-modulus, preformed polyurethane extrusion specifically designed to bridge joints under elastomeric wall coatings. Dymonic Simple Seal is bonded with Dymonic® 100 polyurethane sealant to a wide range of substrates to provide a watertight seal.

## FEATURES & BENEFITS:

- Easy installation reduces time and labor costs
- Superior flexibility and +/- movement capabilities
- High strength provides durability and excellent tear resistance

## COMMON APPLICATIONS:

- Expansion joints
- Window/door perimeters
- Dryvit / EIFS joints
- Parapet walls
- Transition seals
- Curtain wall joints
- Other lap joints that will be coated with an elastomeric coating



# Proglaze® ETA

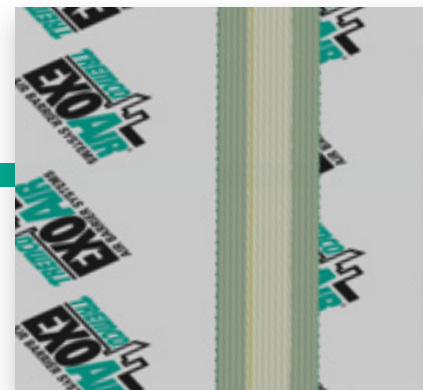
Proglaze® ETA is a pre-engineered translucent silicone transition assembly for junctions between assemblies throughout the building envelope. It is comprised of a flat, ribbed silicone extrusion which is adhered with Spectrem® 1 Silicone Sealant to ensure a durable connection and positive seal.

## FEATURES & BENEFITS:

- Can span and seal across irregular geometries
- Translucent silicone allows installers to verify a complete seal
- Variety of sizes available
- Durable, flexible connection between components

## COMMON APPLICATIONS:

- Roof-to-wall, window-to-wall and foundation-to-wall connections
- Expansion, drift and control joints
- Floor deflection joints
- Corner connections
- Penetrations



# Spectrem® Simple Seal

Spectrem® Simple Seal high-performance silicone extrusions are designed to seal joints and gaps ranging from low to high-movement conditions. Spectrem Simple Seal provides flexible, tear-resistant properties that will help to protect your building from air and moisture penetration.

## FEATURES & BENEFITS:

- Easy installation reduces time and labor costs
- Superior flexibility and +/- movement capabilities
- High strength provides durability and excellent tear resistance

## COMMON APPLICATIONS:

- Window/door perimeters
- Dryvit / EIFS joints
- Parapet walls
- Skylights
- Aluminum window seals
- Transition seals
- Curtain wall joints
- Sheet metal roof joints and other lap joints





(Accessory)

## ExoAir® Flex Foam

ExoAir® Flex Foam is a single-component, high performance, gun-grade polyurethane foam that performs as a flexible thermal barrier. With an industry leading movement range of +/-15%, ExoAir Flex is CFC-free and can be applied over a wide temperature range, making it a reliable, four-season solution.

### FEATURES & BENEFITS:

- Cures to a very fine, highly-elastic foam structure
- Thermal insulation in demanding, high-movement areas
- Absorbs up to 3 times more movement than competing expandable foams
- The industry's only true flexible foam
- Adheres to most common building materials

### COMMON APPLICATIONS:

- Thermal and sound barrier around window/door perimeters
- Window-to-air barrier connection points



(Accessory)

## ExoAir® LEF

ExoAir® LEF is single-component, CFC-free, all-season, high performance, gun-grade polyurethane foam that performs as a thermal barrier. It is an effective joint filler in hidden applications, and is highly-effective around window and door frame joints.

### FEATURES & BENEFITS:

- Effective as a thermal and sound barrier
- Low pressure build
- Low water absorption
- Tack-free in 10 minutes and resistant to decay and heat

### COMMON APPLICATIONS:

- Gaps around penetrations and in cavity walls
- Joint filler in hidden applications
- Around window and door frame joints



and



are part of the Tremco Construction Products Group:



Construction Products Group

Tremco Construction Products Group brings together the Commercial Sealants & Waterproofing and Roofing & Building Maintenance divisions of Tremco CPG Inc.; Nudura Inc.; Prebuck LLC; Willseal; Weatherproofing Technologies, Inc.; Weatherproofing Technologies Canada, Inc.; Pure Air Control Services, Inc.; and Tremco Barrier Solutions, Inc.

Our products and services empower teams to develop, design, engineer and operate structures that are more efficient to build and maintain, are virtually impervious to the elements and can provide any look desired.





3735 Green Road, Beachwood, OH 44122  
Phone: 216.292.5000 • 800.321.7906

220 Wicksteed Ave., Toronto, ON M4H 1G7  
Phone: 416.421.3300 • 800.363.3213

[www.tremcosealants.com](http://www.tremcosealants.com)