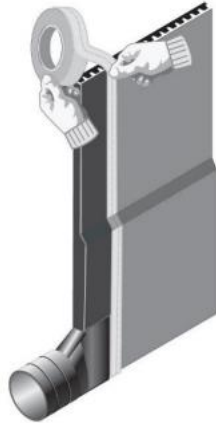


## Universal Outlet



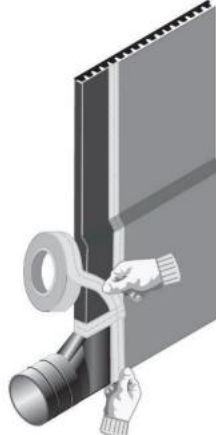
STEP # 1

Place End Outlet under end of HQ Drain with fabric facing up.



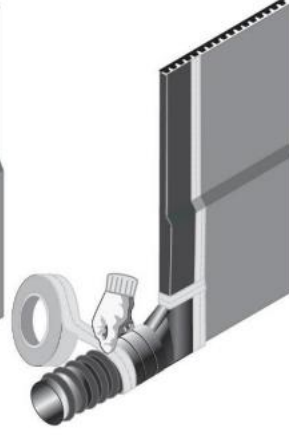
STEP # 2

Fold fabric around exposed edge of core and tape to secure.



STEP # 3

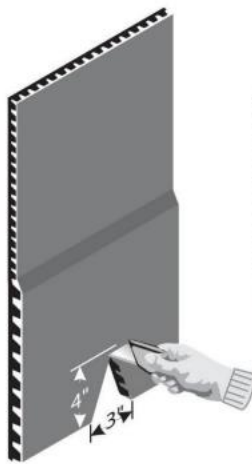
Secure all edges with Tape to prevent soil intrusion.



STEP # 4

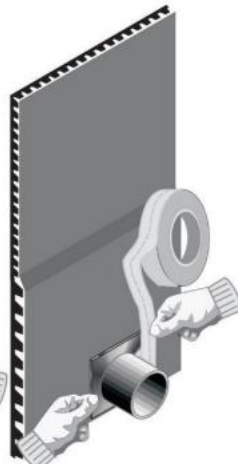
Insert pipe into End Outlet and secure with tape.

## Universal Tee



STEP # 1

Using a razor knife, cut a "V" notch approximately 3" wide and 4" high



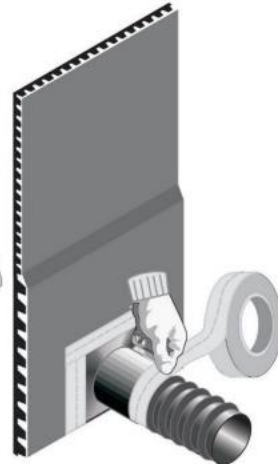
STEP # 2

Insert fitting over "V" notch and tape to secure.



STEP # 3

Make sure all edges are secured with tape to prevent soil intrusion.



STEP # 4

Insert pipe into Tee Outlet and secure with tape.

TFDSAI/1122

Tremco Construction Products Group (CPG) brings together Tremco CPG Inc. and its Dryvit and Nudura brands; Willseal; Prebuck LLC; Tremco Barrier Solutions, Inc.; Weatherproofing Technologies, Inc. and its Pure Air Control Services and Canam Building Envelope Specialists offerings; and Weatherproofing Technologies Canada, Inc.