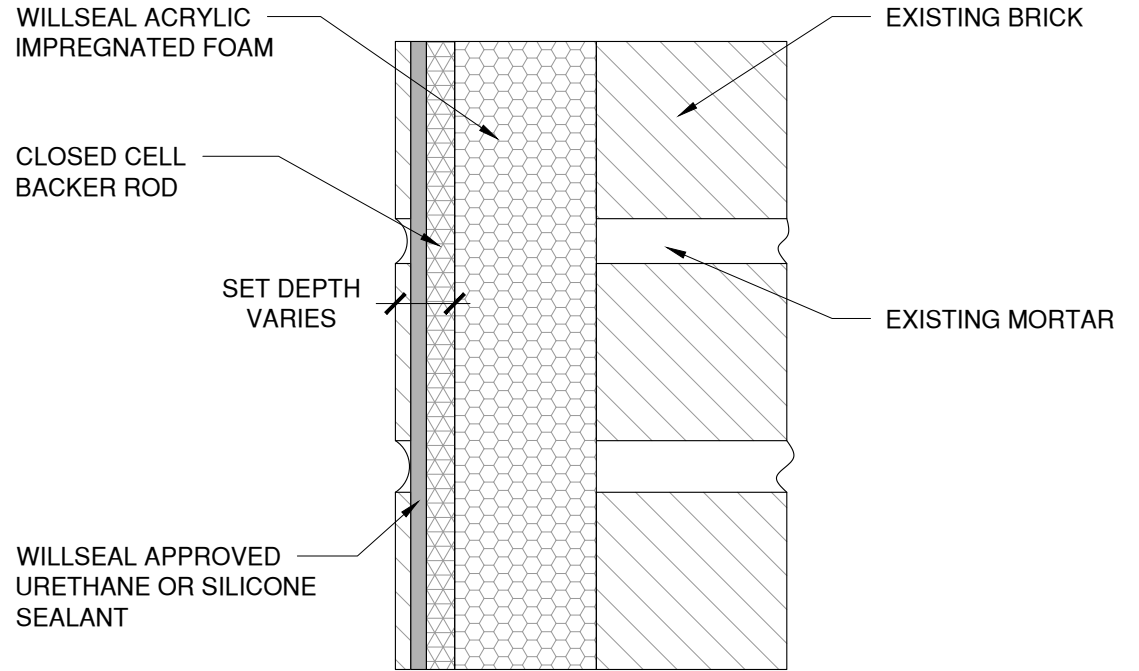
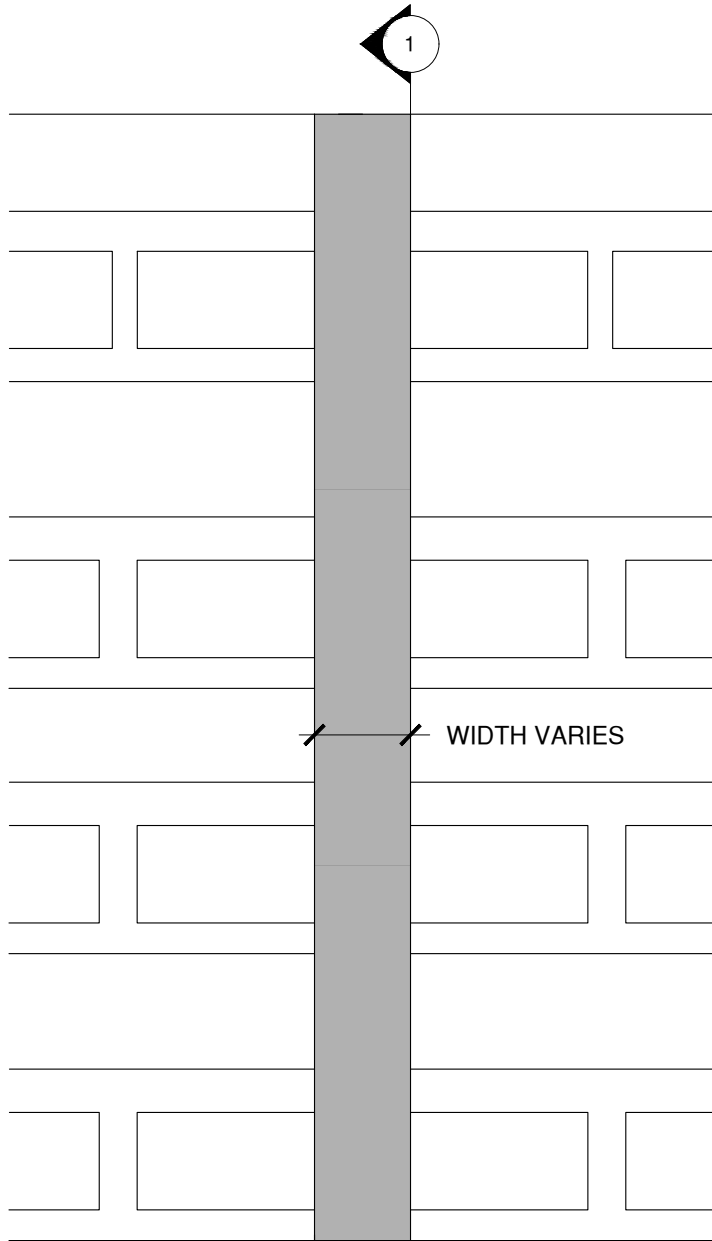


NOTE: REFER TO TREMCO'S PUBLISHED APPLICATION INSTRUCTIONS FOR ACCEPTABLE JOINT SIDE WALL SUBSTRATE CONDITIONS PRIOR TO INSTALLATION



1 SECTION VIEW

EXISTING BRICK WALL

*The architecture, engineering, and design of the project using the Willseal products are the responsibility of the project's design professional. All products and systems must comply with local building codes and standards. This detail is for general information and guidance only and Willseal specifically disclaims any liability for the use of this detail. The project design professional determines, in its sole discretion, whether this detail or a functionally equivalent detail is best suited for the project. This detail is subject to change without notice. Contact Willseal to ensure you have the most recent version.*

**Willseal 150**

Detail: Willseal 150 at Masonry Application - Secondary Seal with Backer Rod

File Name:

W150-WW-03



Drawn by: KAB

Checked by: AM

Scale: NTS

Date: 2/23/2022

Willseal Technical Support: 800-274-2813

[www.tremcocpg.com](http://www.tremcocpg.com)

