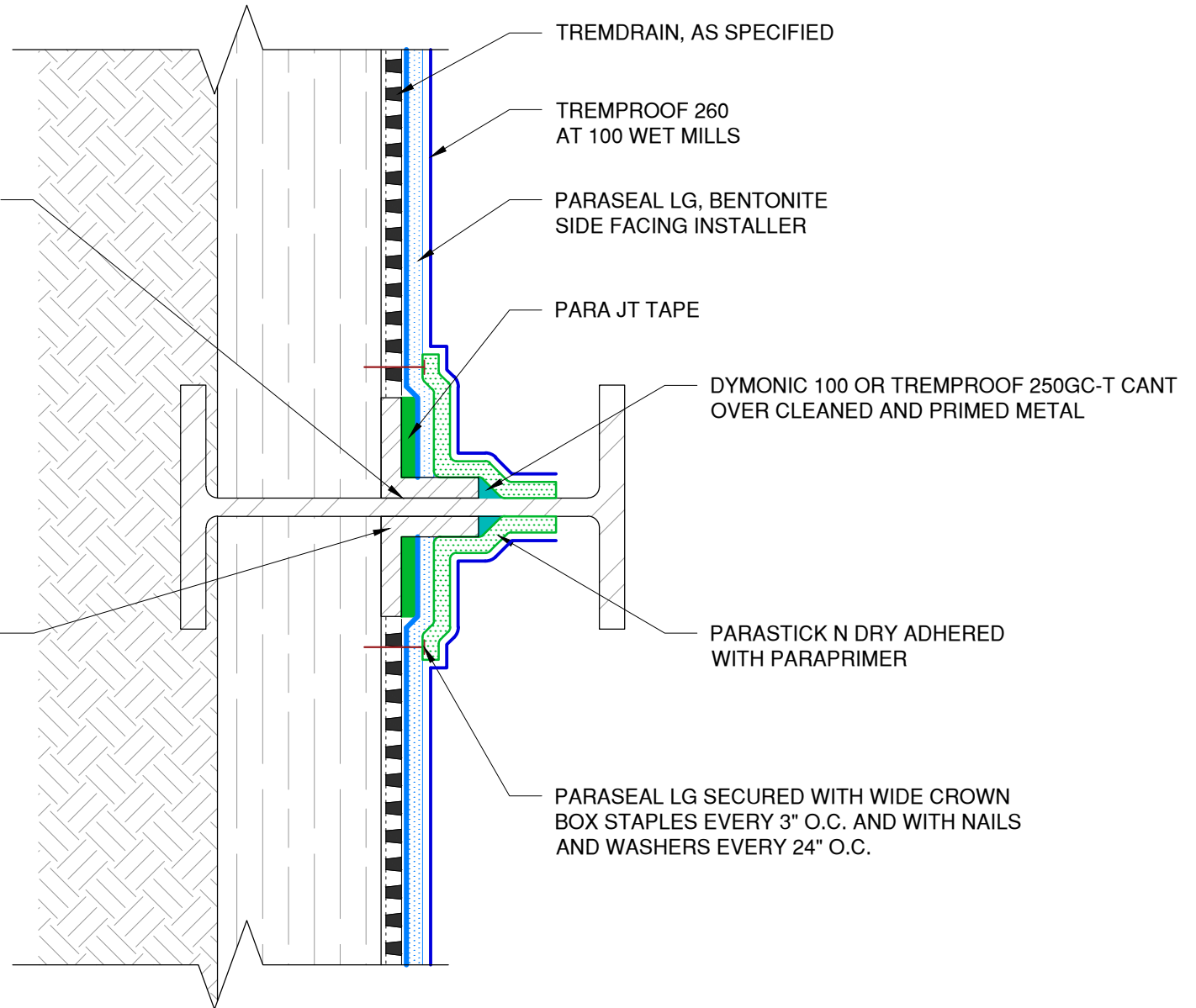


GRIND WEB OF BEAM AND CONTINUOUS WELDED METAL ANGLE USING WIRE WHEEL OR WIRE BRUSH SO THAT THE METAL IS 'BRIGHT WHITE' THEN APPLY PARAPRIMER OVER BEAM

MINIMUM 3" X 3" CONTINUOUS ANGLE SPOT WELDED ONTO WEB OF BEAM FULL LENGTH TO SECURE LAGGING IN PLACE



NOTES: PARASEAL PRODUCTS REQUIRE A MIN 24 PSF OF COMPACTION/CONFINEMENT IN ORDER TO FUNCTION AS DESIGNED.

NOT RECOMMENDED FOR USE IN SUBMERGED CONDITIONS.

*The architecture, engineering, and design of the project using the Tremco products are the responsibility of the project's design professional. All products and systems must comply with local building codes and standards. This detail is for general information and guidance only and Tremco specifically disclaims any liability for the use of this detail. The project design professional determines, in its sole discretion, whether this detail or a functionally equivalent detail is best suited for the project. This detail is subject to change without notice. Contact Tremco to ensure you have the most recent version.*

**TREMproof TWS Blindsided Wall**



Tremco Technical Support: 866-209-2404

Detail: TREMproof TWS Blindsided Wall at Mid Lagged Soldier Pile - Plan View

Drawn by: HDE

Checked by: WH

Scale: NTS

Date: 4/26/2022

File Name:

TWS-BSW-04



Construction Products Group

[www.tremcocpg.com](http://www.tremcocpg.com)