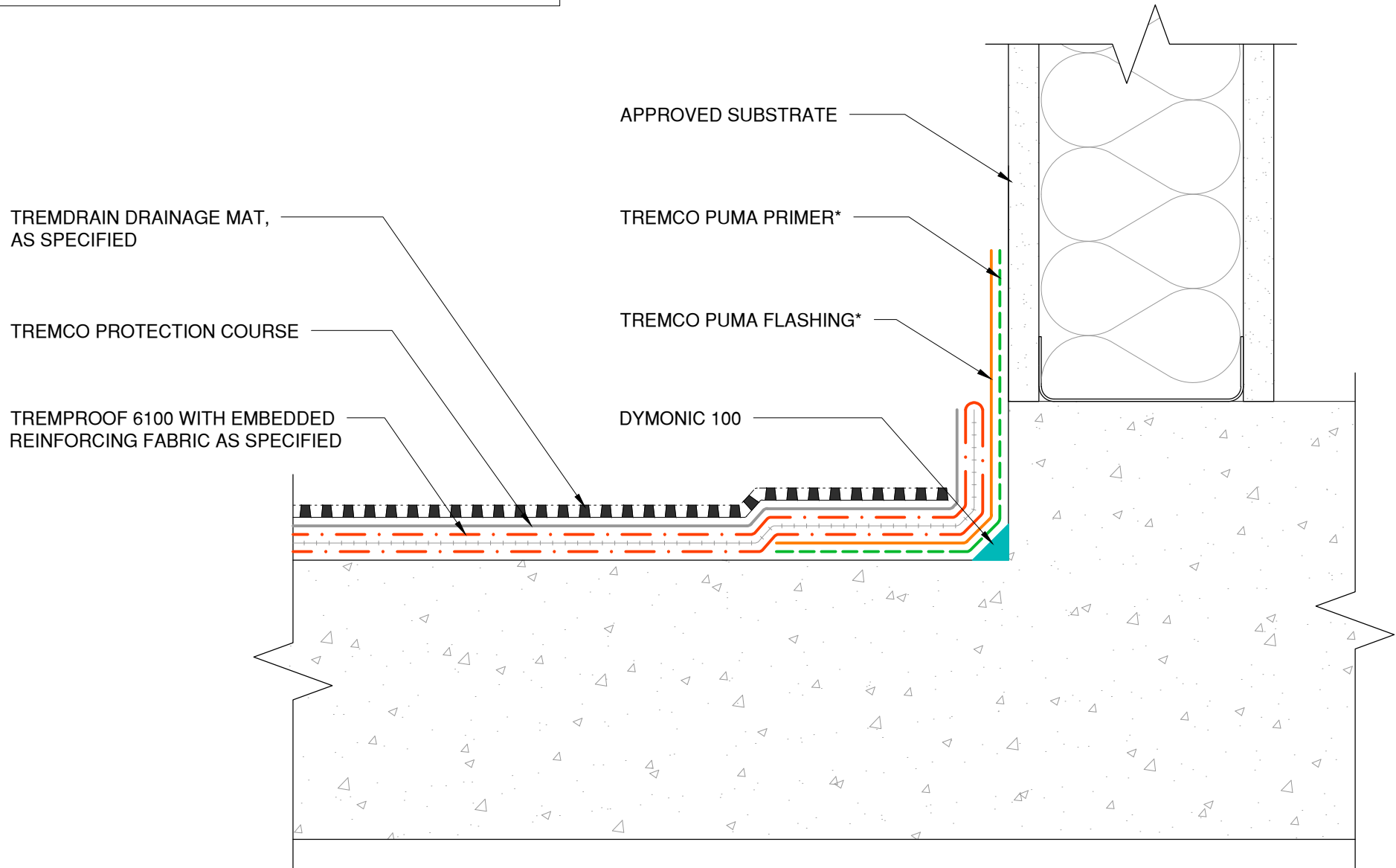



NOTE: TREMPRIME QD OR TREMCO APPROVED PRIMER MUST BE APPLIED BEFORE THE APPLICATION OF TREMPROOF 6100

*A COMPONENT OF THE TREMPROOF® PUMA FLASHING SYSTEM WITH PUMA (POLYURETHANE METHACRYLATE)



The architecture, engineering, and design of the project using the Tremco products are the responsibility of the project's design professional. All products and systems must comply with local building codes and standards. This detail is for general information and guidance only and Tremco specifically disclaims any liability for the use of this detail. The project design professional determines, in its sole discretion, whether this detail or a functionally equivalent detail is best suited for the project. This detail is subject to change without notice. Contact Tremco to ensure you have the most recent version.

TREMPROOF 6100

 Tremco Technical Support: 866-209-2404	Detail: TREMPROOF 6100 at Upturn to Sheathing Wall with TREMPROOF PUMA FLASHING			File Name:	 Construction Products Group
	Drawn by: KAB	Checked by: WH	Scale: NTS	Date: 11/16/2023	
www.tremcocpg.com					