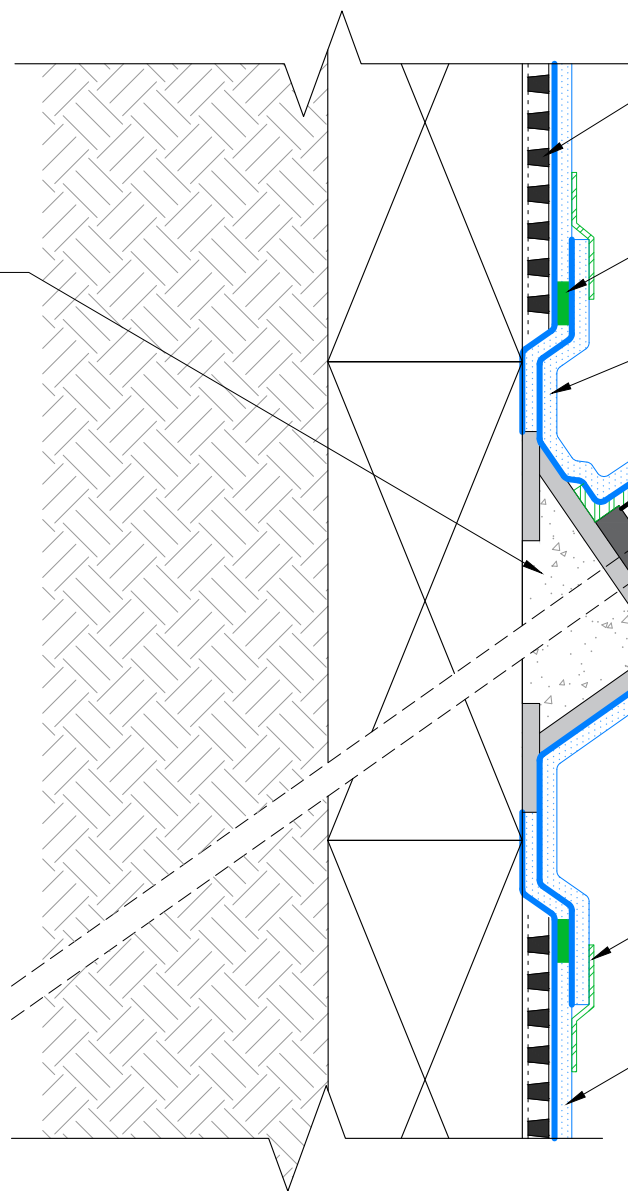


FILL ANY VOID SOLID WITH GROUT



TREMDRAIN AS SPECIFIED, APPLIED ABOVE WATERTABLE ONLY

PARA JT TAPE

PARASEAL GM/LG TARGET SHEET TO BE SECURED WITH NAILS AND WASHERS AT THE CORNERS AND WITH BOX CROWN STAPLES EVERY 3" O.C. THEREAFTER

PVC CAP OR PRE-FABRICATED BOOT WITH PARAMASTIC FILL

PARASTICK N DRY ADHERED TO PARASEAL GM/LG AND PVC CAP WITH PARAPRIMER AND SECURED WITH TIE-WIRE

3" PARASTICK N DRY

PARASEALGM/ LG, BENTONITE SIDE FACING INSTALLER

NOTES: PARASEAL PRODUCTS REQUIRE A MIN 24 PSF OF COMPACTION/CONFINEMENT IN ORDER TO FUNCTION AS DESIGNED.

The architecture, engineering, and design of the project using the Tremco products are the responsibility of the project's design professional. All products and systems must comply with local building codes and standards. This detail is for general information and guidance only and Tremco specifically disclaims any liability for the use of this detail. The project design professional determines, in its sole discretion, whether this detail or a functionally equivalent detail is best suited for the project. This detail is subject to change without notice. Contact Tremco to ensure you have the most recent version.

Paraseal GM/LG 20 Mil Blindside Walls



Tremco Technical Support: 866-209-2404

Detail: Paraseal GM/LG 20 Mil at Non-Detentioned Tie-Back - PVC Cap Option

Drawn by: KAB

Checked by: WH

Scale: NTS

Date: 3/29/2022

File Name:

BSW-GM20-TB-01



Construction Products Group

www.tremcocpg.com