

TREMPROOF 6100 WITH REINFORCING FABRIC FULLY EMBEDDED

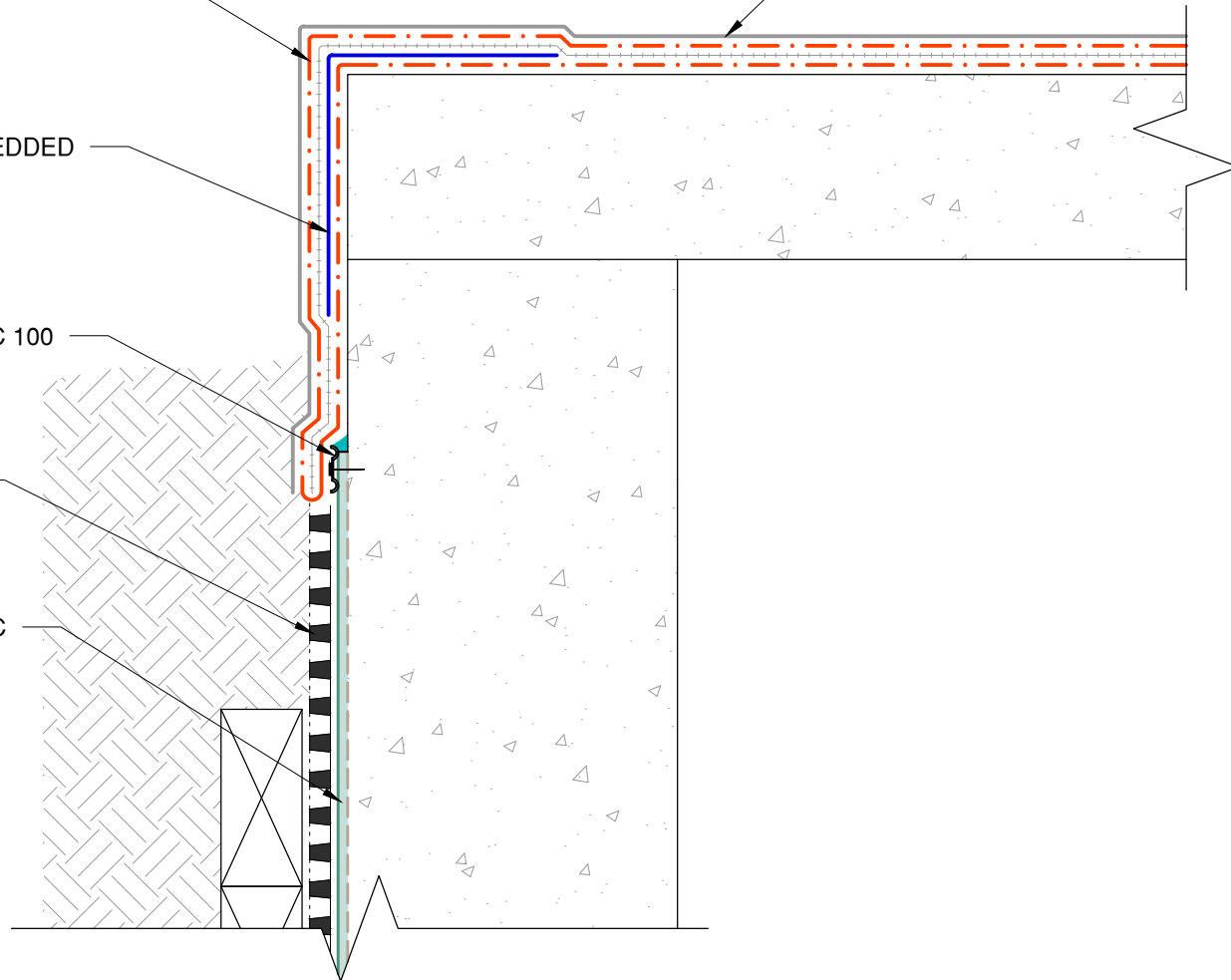
TREMCO PROTECTION COURSE

ELASTOMERIC SHEETING EMBEDDED IN TREMPROOF 6100

PARATERM BAR WITH DYMONIC 100

TREMDRAIN, AS SPECIFIED

TREMPROOF AMPHIBIA, FABRIC SIDE AGAINST CONCRETE



NOTES: TREMPRIME QD OR TREMCO APPROVED PRIMER MUST BE APPLIED BEFORE THE APPLICATION OF TREMPROOF 6100

BUILDING FACADE NOT SHOWN FOR CLARITY

*The architecture, engineering, and design of the project using the Tremco products are the responsibility of the project's design professional. All products and systems must comply with local building codes and standards. This detail is for general information and guidance only and Tremco specifically disclaims any liability for the use of this detail. The project design professional determines, in its sole discretion, whether this detail or a functionally equivalent detail is best suited for the project. This detail is subject to change without notice. Contact Tremco to ensure you have the most recent version.*

**TREMProof Amphibia Blindside Walls**



Detail: TREMProof Amphibia at Blindside Wall to TREMProof 6100

File Name:

Drawn by: KAB

Checked by: WH

Scale: NTS

Date: 3/10/2022

A-BSW-T-06



Tremco Technical Support: 866-209-2404

[www.tremcocpg.com](http://www.tremcocpg.com)