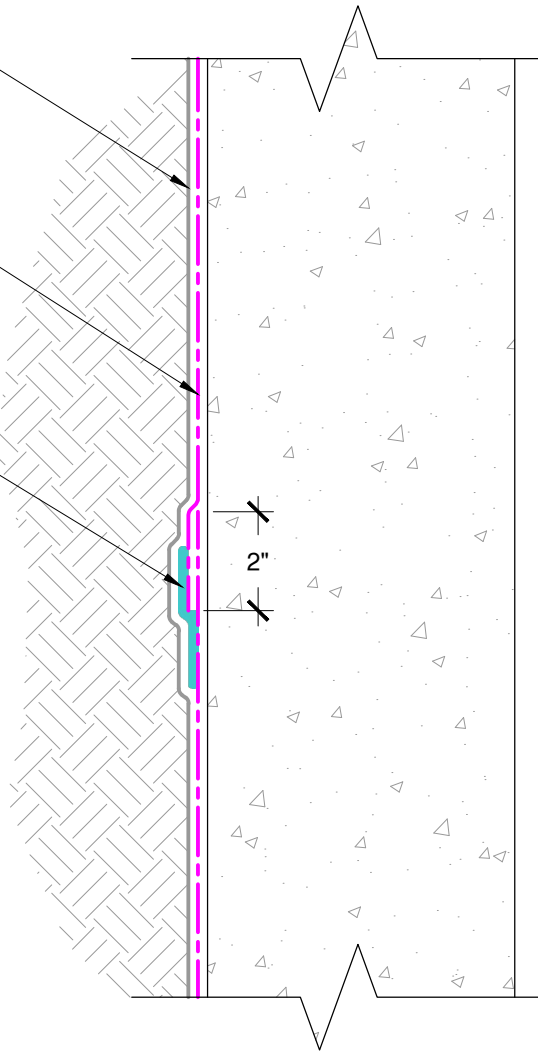


TREMCO PROTECTION COURSE, AS SPECIFIED

TREMPROOF 560A

DYMONIC 100 COVERING SEAM



NOTE: TREMPRIME 500 MUST BE APPLIED BEFORE THE APPLICATION OF TREMPROOF 560A

The architecture, engineering, and design of the project using the Tremco products are the responsibility of the project's design professional. All products and systems must comply with local building codes and standards. This detail is for general information and guidance only and Tremco specifically disclaims any liability for the use of this detail. The project design professional determines, in its sole discretion, whether this detail or a functionally equivalent detail is best suited for the project. This detail is subject to change without notice. Contact Tremco to ensure you have the most recent version.

TREMProof 560A



Tremco Technical Support: 866-209-2404

Detail: TREMProof 560A Seams

Drawn by: KAB

Checked by: WH

Scale: NTS

Date: 2/24/2022

File Name:

560A-G-02

www.tremcocpg.com



Construction Products Group