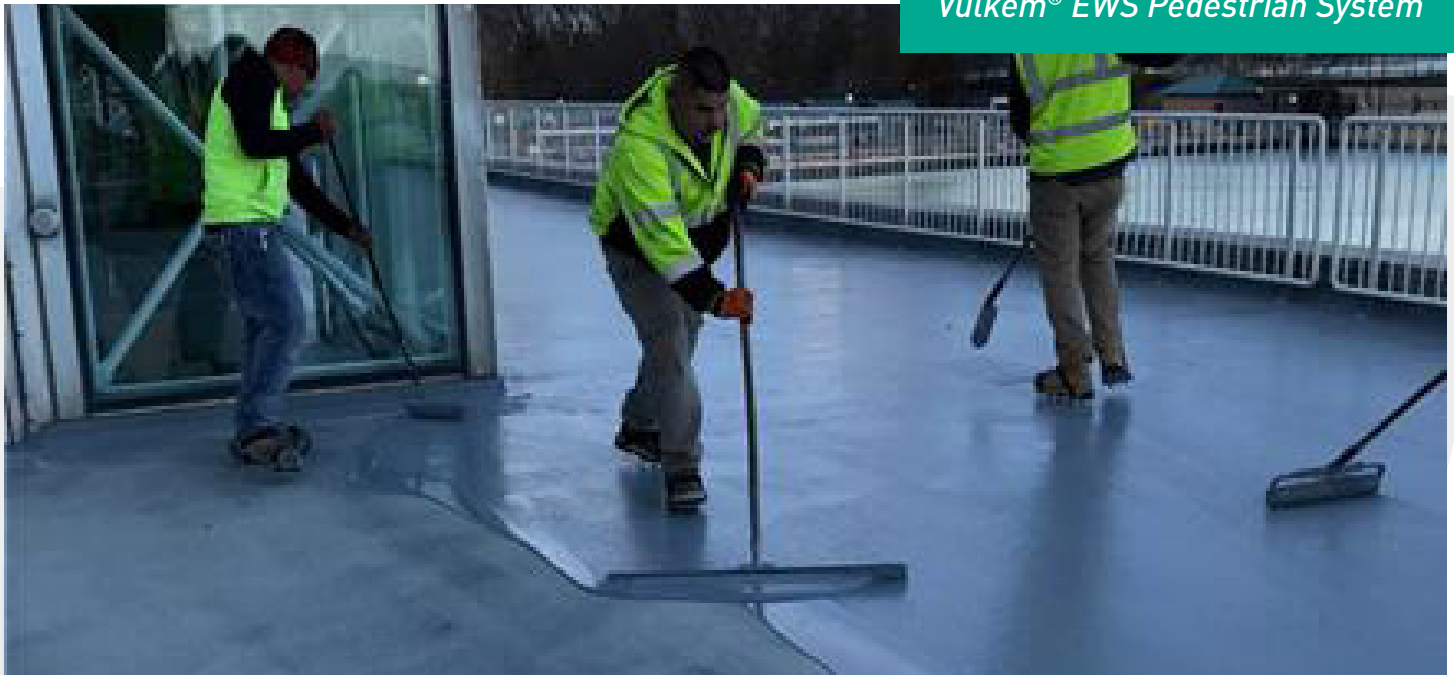


VULKEM® EWS PEDESTRIAN SYSTEM

Ideal system for stadiums, balconies, pedestrian walkways, roof terraces, mechanical rooms, recreation decks and similar applications requiring a waterproof coating system

Features & Benefits

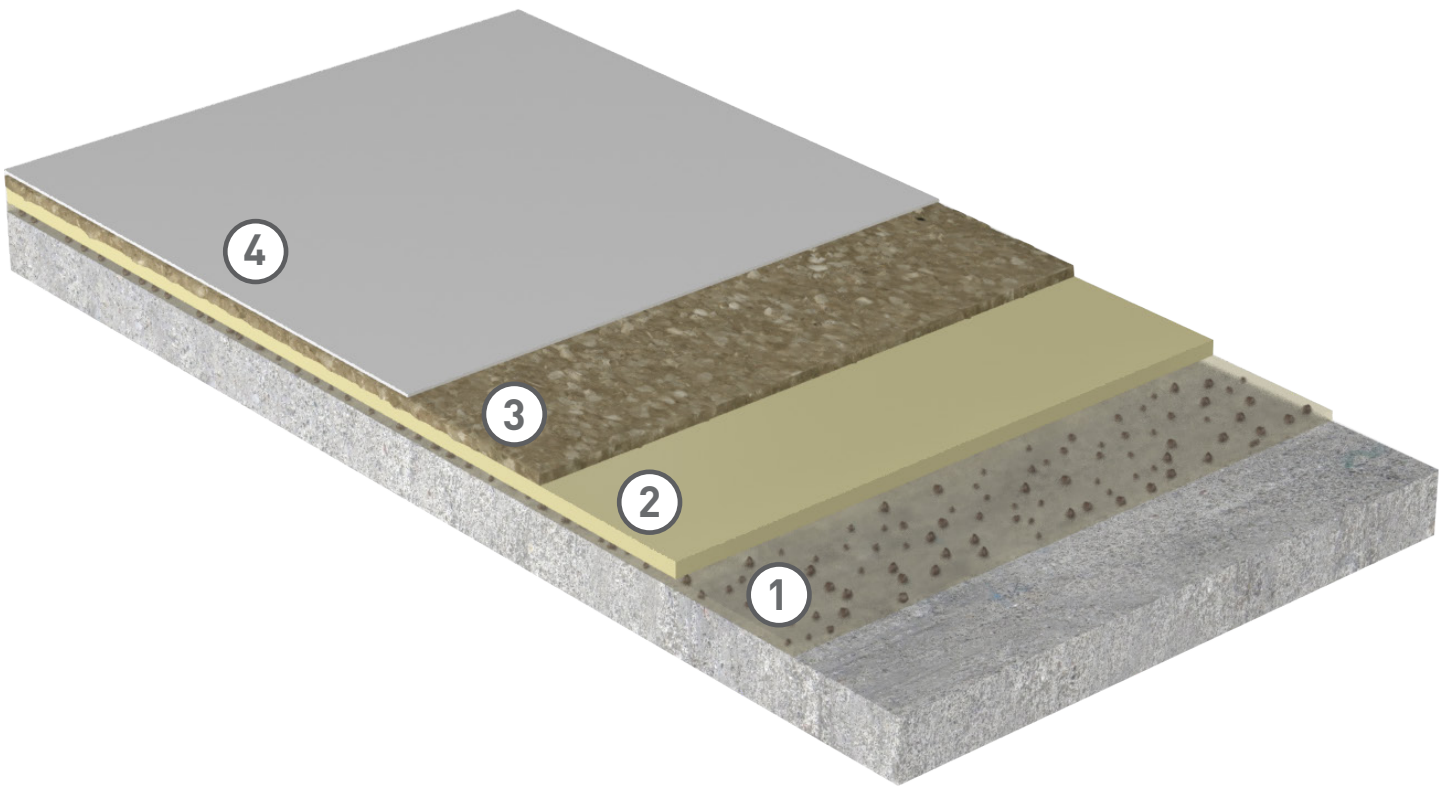
- Minimal downtime (approximately 30 to 45 min) between application coats, even in cold temperatures.
- Open to foot traffic within one hour after application completion.
- Polyurethane-methacrylate (PUMA) technology delivers extreme durability, decorative functionality and crack bridging capabilities.
- Can be applied in temperatures as low as 14°F (-10°C).



Vulkem® EWS Pedestrian System

Vulkem EWS Pedestrian System

PRODUCT	COVERAGE RATE	WET MILS	COMMENTS
1: Tremco PUMA Primer	90 ft ² /gal	17	Lightly broadcast silica sand.
2: Tremco PUMA BC	26 ft ² /gal	60	Allow 45 min to cure before proceeding.
3: Tremco PUMA TC	80 to 90 ft ² /gal	17 to 20	Broadcast silica sand to refusal.
4: Tremco PUMA TC	53 to 64 ft ² /gal	25 to 30	Allow 45 min to cure before opening to traffic.



Information may vary by region. For specific information, please reference the application instructions or contact your local Tremco representative.

Tremco Commercial Sealants & Waterproofing | 3735 Green Road | Beachwood, OH 44122 | US: 800.852.9068 | CAN: 800.363.3213 | tremcosealants.com

Tremco Construction Products Group (CPG) brings together Tremco Incorporated's Commercial Sealants & Waterproofing and Roofing & Building Maintenance operating divisions; Dryvit Systems, Inc.; Nudura Inc.; Willseal; Weatherproofing Technologies, Inc. and Weatherproofing Technologies Canada, Inc.

 **TREMCO**
Construction Products Group

Tremco® and Vulkem® are registered trademarks of Tremco Incorporated.
Use of the ® symbol indicates registration with the US Patent & Trademark Office and the Canadian Intellectual Property Office.

1220/EWSPSS

tremcocpg.com