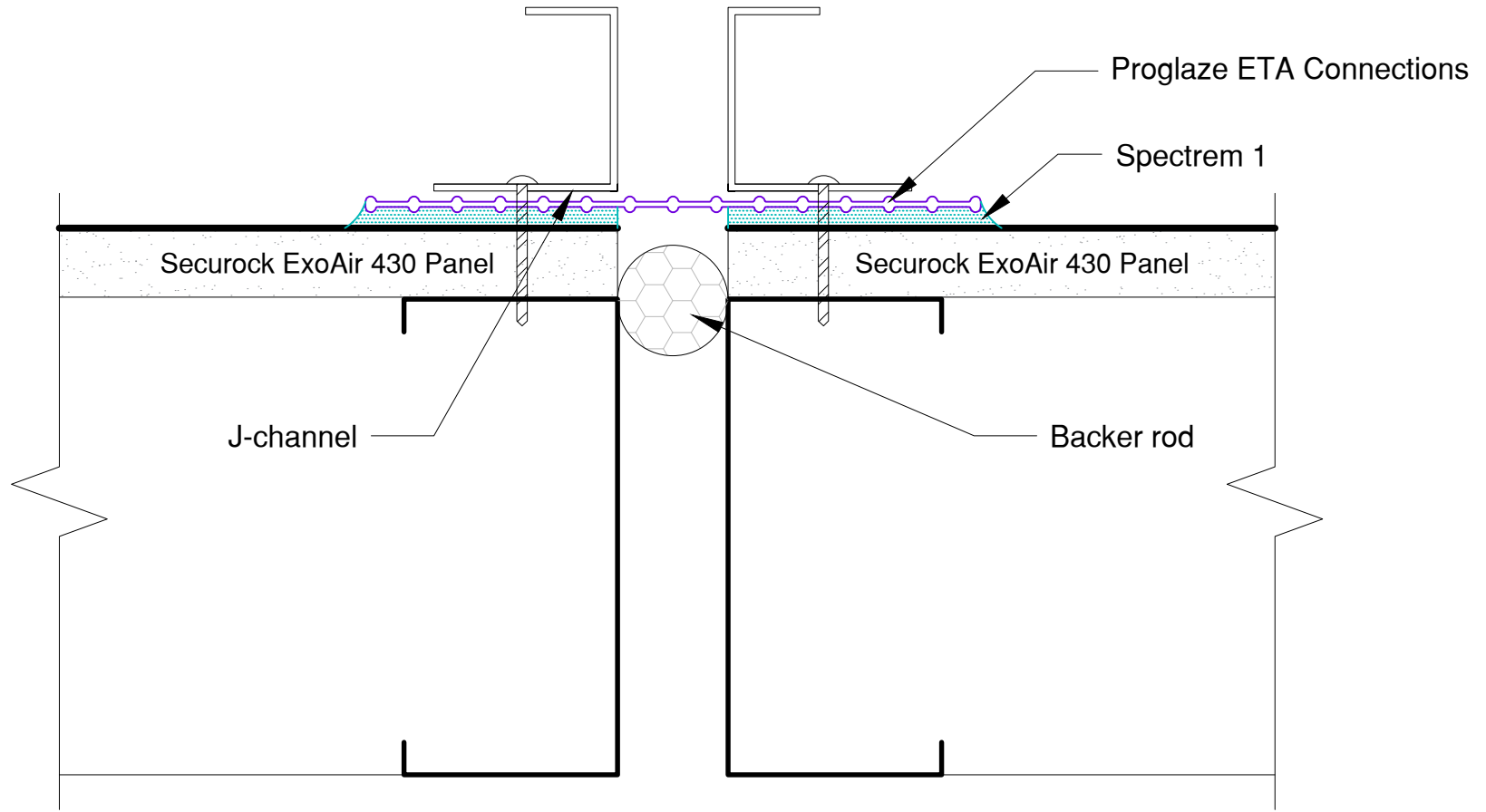


Exterior

Interior



NOTES:

- Proglaze ETA Connections completely set in bed of Spectrem 1 silicone sealant - refer to application instructions for more detail on installation
- Width of Proglaze ETA Connections determined by width of joint/gap and anticipated movement
- 3" Overlap sealed with Spectrem 1 for Proglaze ETA Connections splicing, applied in proper shingle effect
- Should not be used with adhesively attached cladding

See securockexoair.com for the most up-to-date product information

This detail is intended for conceptual purposes only. Must be reviewed by a project/design professional

The following trademarks used herein are owned by USG Corporation or its subsidiaries: SECUROCK, USG, USG in stylized letters. The following trademarks used herein are owned by Tremco Incorporated or its subsidiaries: Tremco, ExoAir, Spectrem, Dymonic, Proglaze, Vulkem.



PERFORMANCE BUILT IN
www.securockexoair.com

United States Gypsum Company
550 West Adams Street
Chicago, IL 60661

USG Technical & Customer Support:
800.USG.4YOU (874-4968)

Tremco Commercial Sealants & Waterproofing
3735 Green Road
Beachwood, OH 44122

Tremco Technical Support:
866.209.2404

SECUROCK® ExoAir® 430 Panel

Project:
Detail: Expansion/Control Joint - Mechanically Fastened Trim

Drawn by: KAB

Approved by: DM

Scale: NTS

File Name:
13128

Rev #
00

Date: 4/12/2017