

TREMCO PROTECTION COURSE

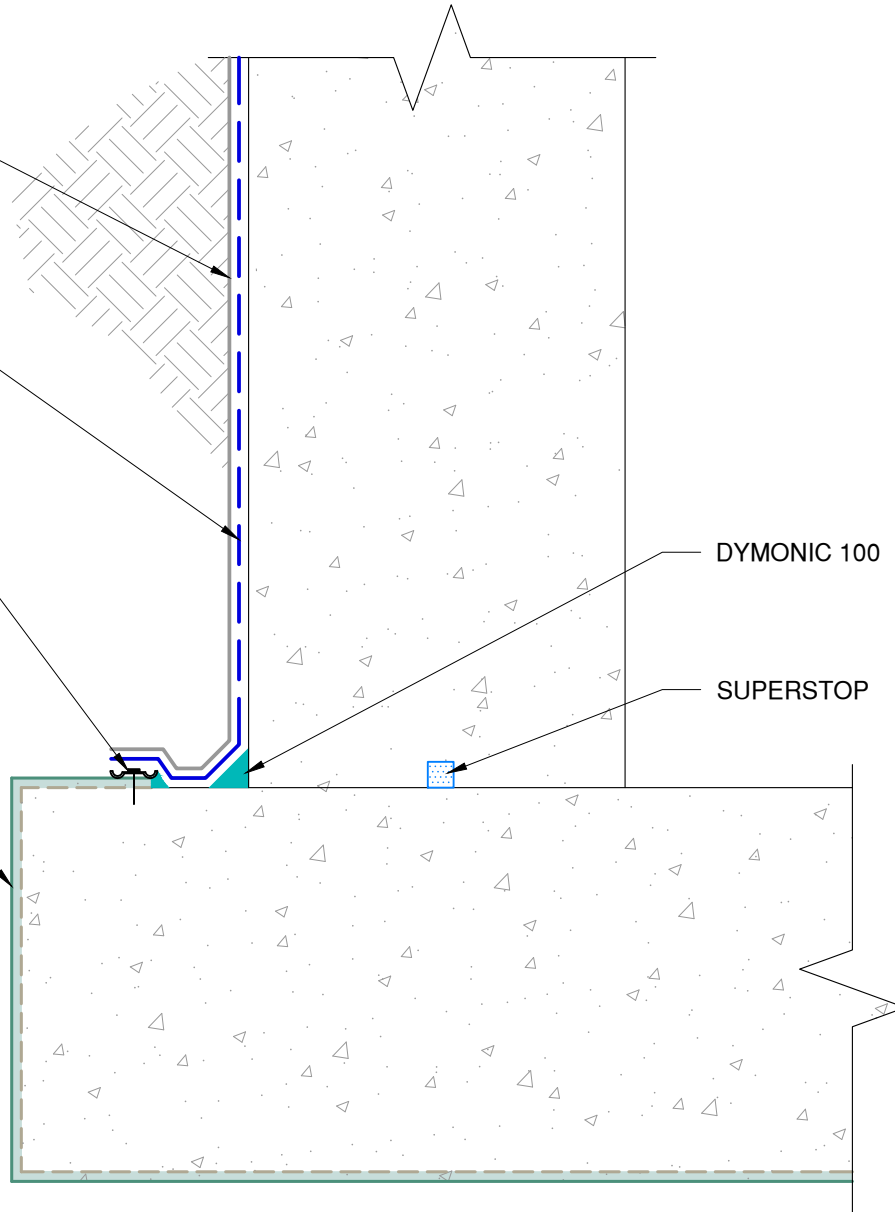
TREMPROOF 250GC, 260 OR 201/60

PARATERM BAR WITH DYMONIC 100

TREMPROOF AMPHIBIA, FABRIC SIDE AGAINST CONCRETE

DYMONIC 100

SUPERSTOP



The architecture, engineering, and design of the project using the Tremco products are the responsibility of the project's design professional. All products and systems must comply with local building codes and standards. This detail is for general information and guidance only and Tremco specifically disclaims any liability for the use of this detail. The project design professional determines, in its sole discretion, whether this detail or a functionally equivalent detail is best suited for the project. This detail is subject to change without notice. Contact Tremco to ensure you have the most recent version.

TREMPROOF Amphibia Below Slab on Grade



Tremco Technical Support: 866-209-2404

Detail: TREMPROOF Amphibia Below Slab on Grade to Backfilled Transition with Footer to TREMPROOF Waterproofing

Drawn by: KAB

Checked by: WH

Scale: NTS

Date: 2/7/2023

File Name:

A-BSOG-T-05



Construction Products Group

www.tremcocpg.com