

TREMPROOF® 6100

Hot-Applied Rubberized Asphalt System

Product Overview

TREMPROOF® 6100 Hot-Applied Rubberized Asphalt system is a flexible, durable, 100% solids, self-healing membrane with a proven track record since 1978. Tremco's 215 mil fabric-reinforced system is ideal when hot-rubberized asphalt is desired.

Features & Benefits

Applications

- Plaza / Podium Decks / Split Slabs
- Planters
- Under Paver Systems
- Insulated Decks
- Vegetated Roofs

Benefits:

- Tested extensively for adhesion and compatibility with Tremco's high-performance air barriers, coatings, sealants, and waterproofing membranes.
- Comprehensive single-source warranty when used with other Tremco building envelope systems.
- Experienced sales and technical support throughout design, detail development, and installation.
- City of Los Angeles approval (LARR #25299)
- Product manufactured by Tremco in an ISO 9001 certified facility, ensuring consistent product quality.

Tremco's System Warranty*

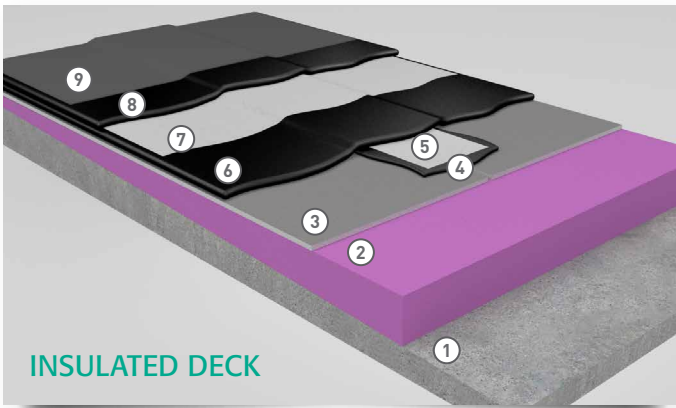
- Enhanced warranties available including watertight, labor & material and no dollar limit for pre-approved projects
- Combined with other Tremco Building Envelope Systems
- Compound warranties can include coverage for approved system components including:
 - Performance of the chosen paver system



- Components of the vegetated roof system
- Thermal retention of the insulation
- Removal and replacement of overburden

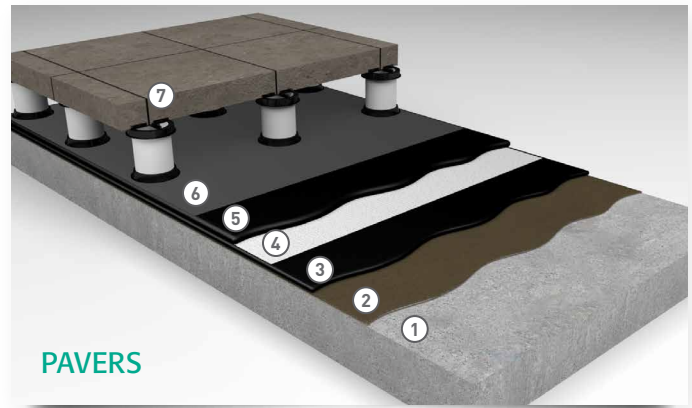
*Contact your local Tremco representative for project-specific warranty terms and conditions.





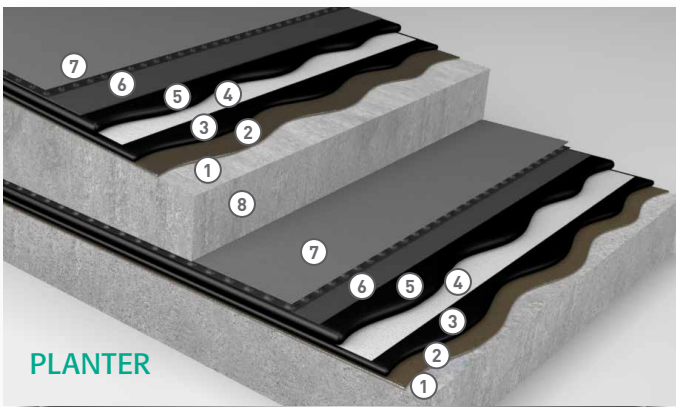
INSULATED DECK

- | | |
|------------------------|--------------------------------------|
| 1. Concrete substrate | 6. 90 mils TREMproof 6100 |
| 2. Extruded insulation | 7. Tremco Reemay |
| 3. Primed roof board | 8. 125 mils TREMproof 6100 |
| 4. TREMproof 6100 | 9. Tremco-approved protection course |
| 5. Tremco Reemay strip | |



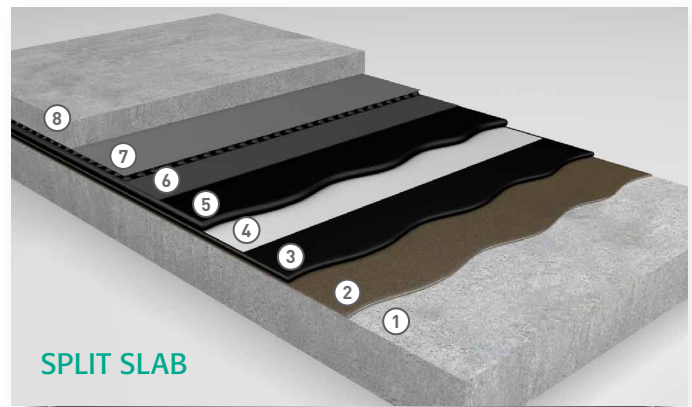
PAVERS

- | | |
|---------------------------|--------------------------------------|
| 1. Concrete substrate | 5. 125 mils TREMproof 6100 |
| 2. Primer | 6. Tremco-approved protection course |
| 3. 90 mils TREMproof 6100 | 7. Paver / pedestal system |
| 4. Tremco Reemay | |



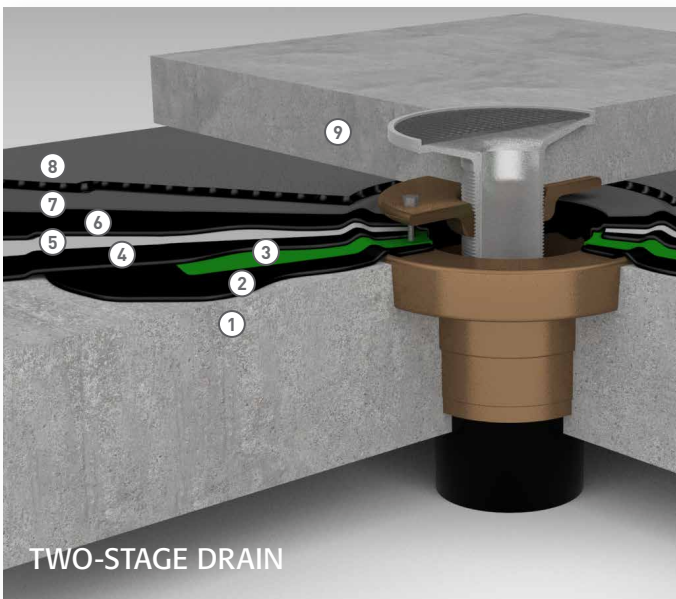
PLANTER

- | | |
|----------------------------|--------------------------------------|
| 1. Concrete substrate | 6. Tremco-approved protection course |
| 2. Primer | 7. TREMDrain® drainage board |
| 3. 90 mils TREMproof 6100 | 8. Sloped concrete topping slab |
| 4. Tremco Reemay | |
| 5. 125 mils TREMproof 6100 | |



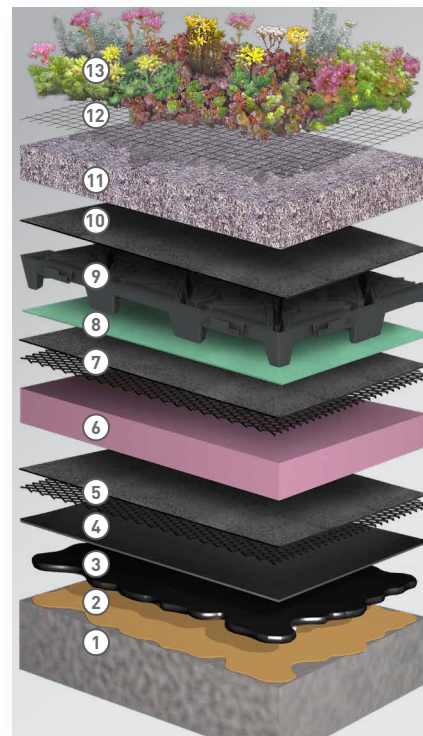
SPLIT SLAB

- | | |
|----------------------------|--------------------------------------|
| 1. Concrete substrate | 6. Tremco-approved protection course |
| 2. Primer | 7. TREMDrain drainage board |
| 3. 90 mils TREMproof 6100 | 8. Concrete topping slab |
| 4. Tremco Reemay | |
| 5. 125 mils TREMproof 6100 | |



TWO-STAGE DRAIN

- | | |
|---|--------------------------------------|
| 1. Primed concrete substrate | 6. 125 mils TREMproof 6100 |
| 2. TREMproof 6100 | 7. Tremco-approved protection course |
| 3. Tremco Elastomeric Sheeting (uncured neoprene) | 8. TREMDrain drainage board |
| 4. 90 mils TREMproof 6100 | 9. Concrete topping slab |
| 5. Tremco Reemay | |

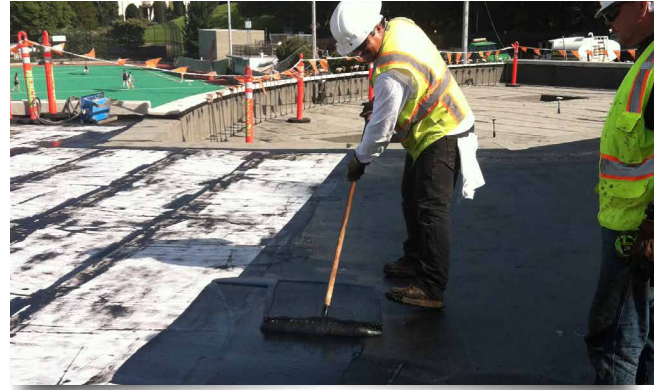


VEGETATED ROOF

- | |
|---|
| 1. Concrete substrate |
| 2. Primer |
| 3. TREMproof 6100 with embedded Tremco Reemay |
| 4. Tremco-approved protection course & HDPE-40 Root Barrier |
| 5. TREMDrain drainage board |
| 6. Insulation |
| 7. Drainage board (optional) |
| 8. Air layer |
| 9. Drainage/Retention tray |
| 10. Filter fabric |
| 11. Engineered growing media |
| 12. Stabilization net |
| 13. Vegetation |

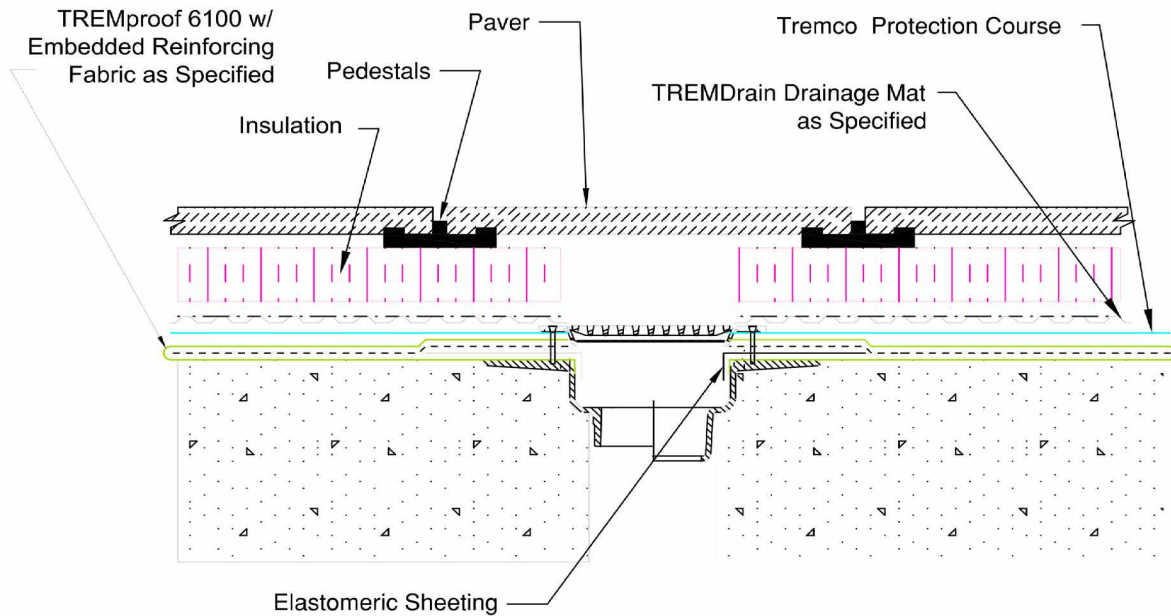
Get started with Design Assistance from Tremco

Complex jobs often require custom solutions. Tremco is uniquely qualified to provide job-specific details for even the most demanding waterproofing applications. Experienced, knowledgeable Tremco field and technical services representatives in every major market across North America provide assistance with product selection, specifications, system design, testing and on-site support.



Locate a representative in your area

<http://www.tremcosealants.com/distributorrep-locator.aspx>



Note:

Tremprime QD or another Tremco approved primer must be applied before the application of TREMproof 6100

Treatment of Staged Drain w/ Pavers

Tremco Commercial Sealants & Waterproofing | 3735 Green Road | Beachwood, OH 44122 | US: 800.852.9068 | CAN: 800.363.3213 | tremcosealants.com

Tremco Construction Products Group (CPG) brings together Tremco Incorporated's Commercial Sealants & Waterproofing and Roofing & Building Maintenance operating divisions; Dryvit Systems, Inc.; Nudura Inc.; Willseal; Weatherproofing Technologies, Inc. and Weatherproofing Technologies Canada, Inc.



Tremco®, TREMproof® and TREMDrain® are registered trademarks of Tremco Incorporated. Use of the ® symbol indicates registration with the US Patent & Trademark Office and the Canadian Intellectual Property Office.

0921/TP6100SS

tremcocpg.com