

Spectrem

SIMPLE SEAL

LABOR SAVINGS
UP TO
42%

EIFS SEALANT JOINT REPAIR GUIDE FOR LEAK-FREE BUILDINGS

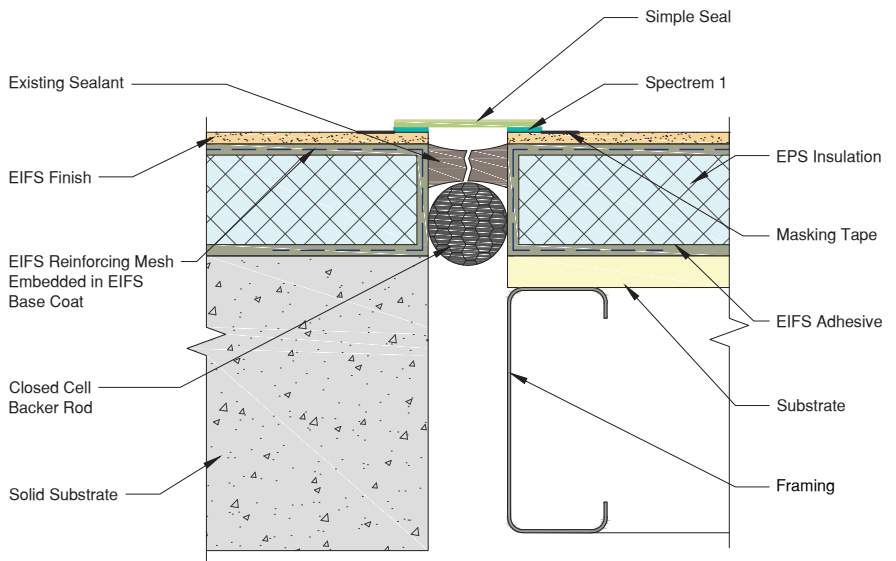
Spectrem® Simple Seal Technical Bulletin

Problem:

The relatively thin layers of the EIFS (Exterior Insulation and Finish Systems) are very durable, yet quite soft and sensitive. Extensive damage to the EIFS finish and structure may occur as a result of sealant failure and this may result in water infiltration problems. Repairing this damage can be time consuming and costly because it involves removal and replacement of the failed sealant and often also requires repair of the damaged EIFS at the expansion/control joints.

Solution:

Spectrem® Simple Seal can be used to effectively repair failed sealant joints on EIFS cladding systems. This can be accomplished without removing the failed sealant eliminating the need to repair the damaged EIFS. Removal of the failed sealant often causes further damage to the EIFS substrate. Utilization of this pre-cured sealant overlay system offers an economical repair alternative and reduces the likelihood of future EIFS joint failures.



Spectrem Simple Seal is available in various finishes including the traditional smooth as well as textured finishes in fine, coarse, and Quarzputz® (a Dryvit® DPR finish) which offer additional aesthetically pleasing options.

CONTINUED ON BACK

Directions:

1. Clean/Prepare EIF surface

Prepared surface must be dry and free of oils, dust, mold, mildew, and any other contaminants that could inhibit the sealant's adhesion to the bonding surface. It is recommended to contact the EIFS manufacturer for recommendations regarding surface preparation and cleaning of the EIFS substrate. Some EIFS manufacturers have specific surface preparation requirements, such as, the removal of the finish coat to expose the base coat.

NOTE: Though not a requirement, it is recommended to cut and remove some of the failed sealant to reduce the potential of further damage to the EIFS during expansion and compression of the joint movement cycle.

2. Adhesion testing

The adhesion characteristics between the sealant and the bonding surface must always be confirmed prior to the application of the Spectrem® Simple Seal's adhesive sealant to the EIFS substrate. Suitable methods for confirming this adhesion include tab adhesion testing performed in Tremco's technical services laboratory or field adhesion testing. For instructions on performing field adhesion tests please consult Tremco's technical services or Technical Service Bulletin S-06-5.

3. Priming and Masking

Depending on the adhesion characteristics of the sealant that is used to adhere the pre-cured sealant tape to the EIFS substrate, a primer may be required to achieve adequate adhesion. It is considered good practice to use masking tape following the application of the primer and prior to the sealant application to ensure an aesthetically favorable sealant joint.

4. Silicone Sealant Application

Adequate amounts of either Spectrem® 1 or Spectrem® 2 silicone sealant must be applied to the substrate on both sides of the joint that the Spectrem Simple Seal will be applied over.



5. Simple Seal Installation

Place the Simple Seal over the joint to be sealed and press the overlay uniformly into the silicone sealant. The sealant must wet out to the outer edges of the pre-cured sealant tape. Excess sealant extruding past the edge of the preformed tape should be cleaned off and tooled.

